

9. Research

9-1. Trends across Kyushu University as a Whole Based on Field Classification of Journals



Overall research performance

22,140

Scholarly Output

99,607

Authors

1.16

FWCI (*1)

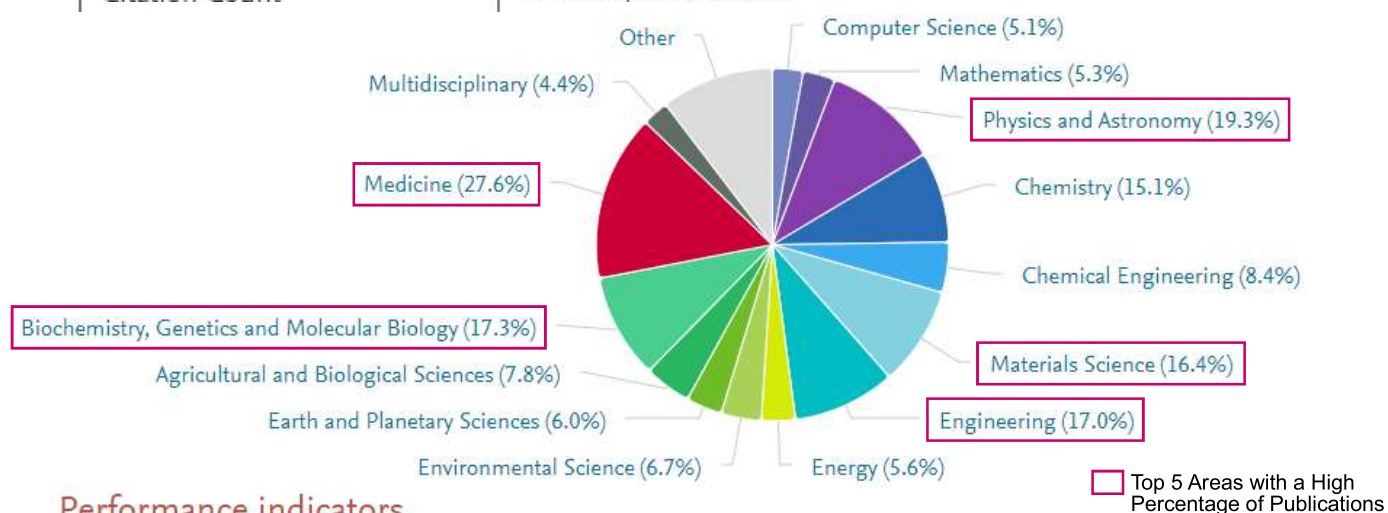
Field-Weighted Citation Impact

316,627

Citation Count

14.3

Citations per Publication



Performance indicators

Outputs in Top Citation Percentiles ①

Publications in top 10% most cited worldwide

☒ Show as field-weighted



Kyushu University:

10.4%

Japan:

8.5%

Publications in Top Journal Percentiles ①

Publications in top 10% journals

by CiteScore Percentile ☒



Kyushu University:

32.0%

Japan:

23.6%

International Collaboration ①

Publications co-authored with Institutions in other countries/regions



Kyushu University:

36.5%

Japan:

32.7%

Academic-Corporate Collaboration ①

Publications with both academic and corporate affiliations



Kyushu University:

8.3%

Japan:

7.1%

Kyushu University
National average

(*1) FWCI (Field-Weighted Citation Impact) is the number of citations received by the publication, divided by the world average for the same type of publications in the same field and same publication year. An FWCI of 1 or higher indicates that the publication's impact exceeds or equals the world average.

Metrics Details

Publication Type: Articles and Reviews; Journal Metric: CiteScore Percentile; Self-Citations: included; Field-Weighted (outputs in top 10% citation percentiles): yes; Field-Weighted (international collaboration): no

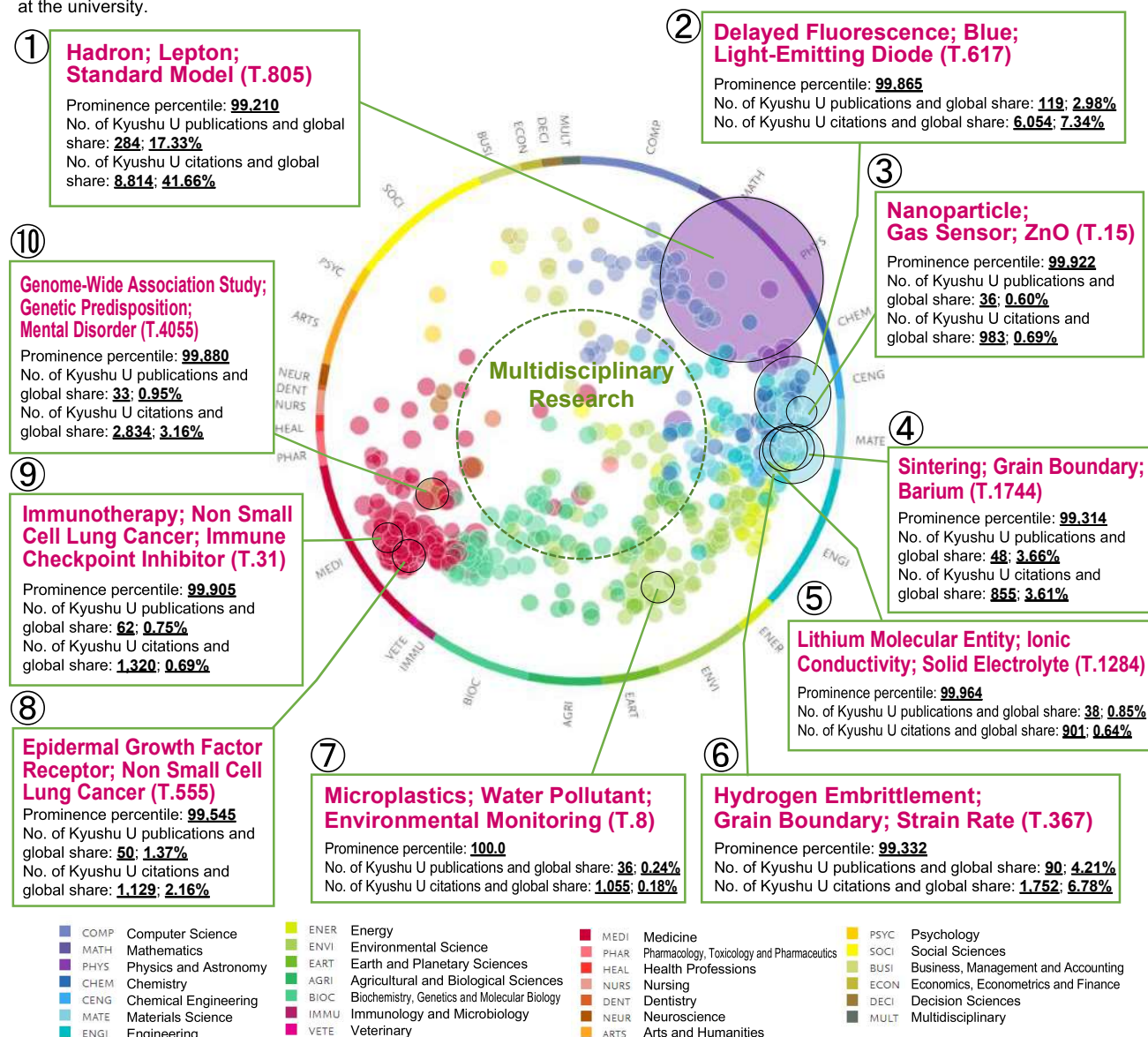
Source: Elsevier's "SciVal" (as of September 2024)

Topic Prominence (attention level): Analysis of University Strengths Based on Co-citation of Publications

The Most Prominent 1% of Topics (2019-2023)

Out of the top 1% prominent topics, 1-10 are those with the top 10 highest number of publications.

Kyushu University has a high number of publications in these fields, so these can be considered some of the most active research fields at the university.



◆ About Topic Prominence ◆

The Scopus literature was clustered into approximately 94,000 topics and 1,500 topic clusters based on citation links and ranked by Prominence. Prominence indicates the current momentum and attention level of a topic by looking at the number of citations in the most recent literature, the number of Scopus views, and the CiteScore. The highest Prominence percentile is 100; Prominence is correlated with grants and helps researchers and administrators identify topics with the highest potential for increased funding. Between 2019 and 2023, of all Kyushu University publications, 8,348 research fields emerged as high-profile topics. In addition, the prominence of a topic is calculated by combining three indicators: (1) the number of citations in year n for papers published in year n and year n-1, (2) the number of Scopus views in year n for papers published in year n and year n-1, and (3) the average CiteScore in year n.

*Please note that with the introduction of the "Next Generation SciVal Topics" in May 2024, the topic set has been updated; so, a simple comparison of past Fact Book data using the previous generation is not possible.

◆ Viewpoint ◆

- The outer wheel uses distinct colors to represent research fields used in Scopus (27 ASJC major subject categories).
- Bubbles represent individual topics.
- The size of bubbles indicates the number of publications contained within each topic.
- The color of each bubble corresponds to the wheel color of the predominant ASJC field by publication proportion within that topic.
- Bubble positions are determined by the proportional distribution of publication fields within each topic, with interdisciplinary topics tending to be positioned closer to the center.

Metrics Details

Publication Type: Articles and Reviews; Self-Citations: included

Website of Elsevier, "SciVal Topic Prominence" (as of September 2024): <https://www.elsevier.com/products/scival/overview/topics>