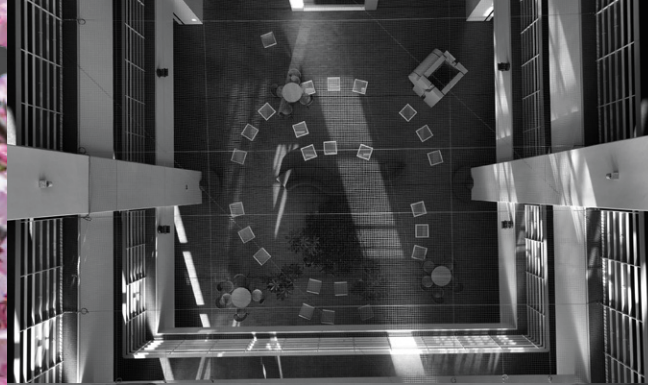


Kyushu University  
**AT A GLANCE**  
Fast Facts & Highlights 2025-2026



# Kyushu University

## located in Smart City Fukuoka

Founded in 1911, Kyushu University is a leading research-oriented institution based in Fukuoka, Japan, with a long history of contributing to academia and society. Since celebrating its centennial in 2011, the university has entered its second century with a renewed commitment to generating greater impact at both national and global levels.

**AIRPORT ACCESS**  
**1st** Shortest airport access 5 mins from airport to the city center

**COST OF LIVING**  
**1st** Lowest consumer prices among major cities in Japan

**METROPOLITAN**  
**Top 5** Major metro areas in Japan (Sapporo, Tokyo, Nagoya, Osaka, and **Fukuoka**)

**ENVIRONMENT**  
Nature & City  
Sea & Mountains  
**in close proximity**



## History

**Nov. 2021** Selected as a Designated National University Corporation

**Sep. 2018** Completed the Ito Campus relocation

**Apr. 2004** Launched as a National University Corporation

**Oct. 2003** Integrated the Kyushu Institute of Design

**May 1949** Established Kyushu University under the National School Establishment Law

**Jan. 1911** Established the Kyushu Imperial University

**Apr. 1903** Established the Fukuoka Medical College

## Campus overview

### Four campuses with unique characteristics

Kyushu University is composed of four main campuses, each serving as a distinctive hub for education and research. Together, the four campuses form a strong foundation that supports the university's diverse and interdisciplinary learning and research activities.

#### Ito Campus



##### Center for integrated science

Kyushu University relocated its main campus from Hakozaki to Ito between 2005 and 2018. Now home to about 18,000 people, Ito serves as a comprehensive research hub in a natural setting and is known for its pioneering hydrogen and fuel cell research, offering a model for a sustainable future.

#### Hospital Campus



##### Center for life and medical sciences

The Hospital Campus serves as a center for education, research, and clinical care, and includes Kyushu University Hospital. The hospital trains future medical professionals and provides advanced treatments, and has been designated a Special Functioning Hospital since 1995. It also operates a branch facility, Kyushu University Beppu Hospital, in Oita.

#### Ohashi Campus



##### Center for innovative design

The Ohashi Campus is Kyushu University's center for design education and research, integrating artistic expression with science and technology. It is home to the School of Design, formed in 2003 after the Kyushu Institute of Design merged with the university.

#### Chikushi Campus



##### Center for cutting-edge sciences

The Chikushi Campus is an education and research hub with diverse advanced facilities, focusing on studies that integrate materials, the environment, and energy. It is home to the Interdisciplinary Graduate School of Engineering Sciences, a standalone graduate school without an undergraduate program.

# University VISION 2030

## From Fukuoka to the World:

Driving Social Change through Integrative Knowledge

### Innovation Gateway to Asia

Fukuoka is **Japan's closest major hub to the wider Asian region**, offering exceptional connectivity to East and Southeast Asia. This geographic advantage positions Kyushu University as an innovation gateway to Asia, where people, knowledge, and ideas move rapidly across borders. From Fukuoka, collaboration extends seamlessly from concept to partnership and from pilot projects to regional engagement, enabling Kyushu University to connect with Asia's dynamic innovation ecosystems.

### Our Role

Kyushu University is among Japan's top-tier institutions and was selected as a **Designated National University Corporation (2021)**—a distinction granted to a limited number of universities entrusted with advancing national innovation and global engagement. Leveraging its location in Fukuoka, Kyushu University advances two flagship platforms: **Inter- and Transdisciplinary Energy Research, and Asian and Oceanian Studies**. Through these platforms, the University addresses complex challenges that extend beyond national boundaries. In addition, Kyushu University plays a leading role in the **Kyushu–Okinawa region** by partnering with eleven universities to build an open innovation ecosystem that links local strengths with Asia and the wider world.



ONE OF JAPAN'S  
TOP-TIER INSTITUTIONS

### Knowledge into Impact: Integrative Knowledge × Three Entry Points

We don't just create knowledge—we turn it into solutions. Our approach fuses **five fields** into one engine for change:

- Science & Engineering
- Design
- Medicine & Life Sciences
- Humanities & Social Sciences
- Mathematics & Information Science

Powered by digital transformation (DX), we target **three global challenges: Decarbonization, Medicine & Health, and Environment & Food**.

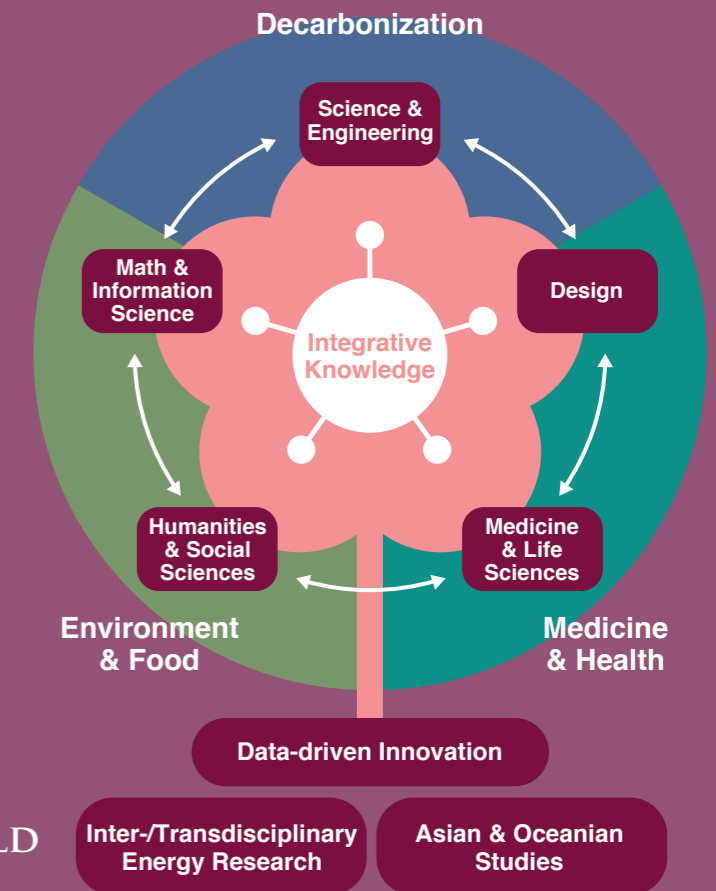
From clean energy breakthroughs to healthier lives and resilient food systems, we accelerate discovery-to-impact—faster, smarter, together.

### Our Promise for 2030

By 2030, we will deliver **world-class research and education**, attract and empower global talent, and anchor an **innovation ecosystem** that links Fukuoka with Asia—and the world.

KNOWLEDGE FOR A BETTER WORLD  
— STARTING HERE IN FUKUOKA.

### Designing Future Society



# Fast Facts (As of May 1, 2025 unless otherwise specified)

## Students and Learning Environment

**18,813**  
Undergraduate 11,687  
Graduate 7,126

**2,182**  
faculty, including  
151 non-Japanese

**9:1**  
Student-to-Faculty Ratio

**12**  
Undergraduate Schools

**19**  
Graduate Schools

**21**  
Double degree programs

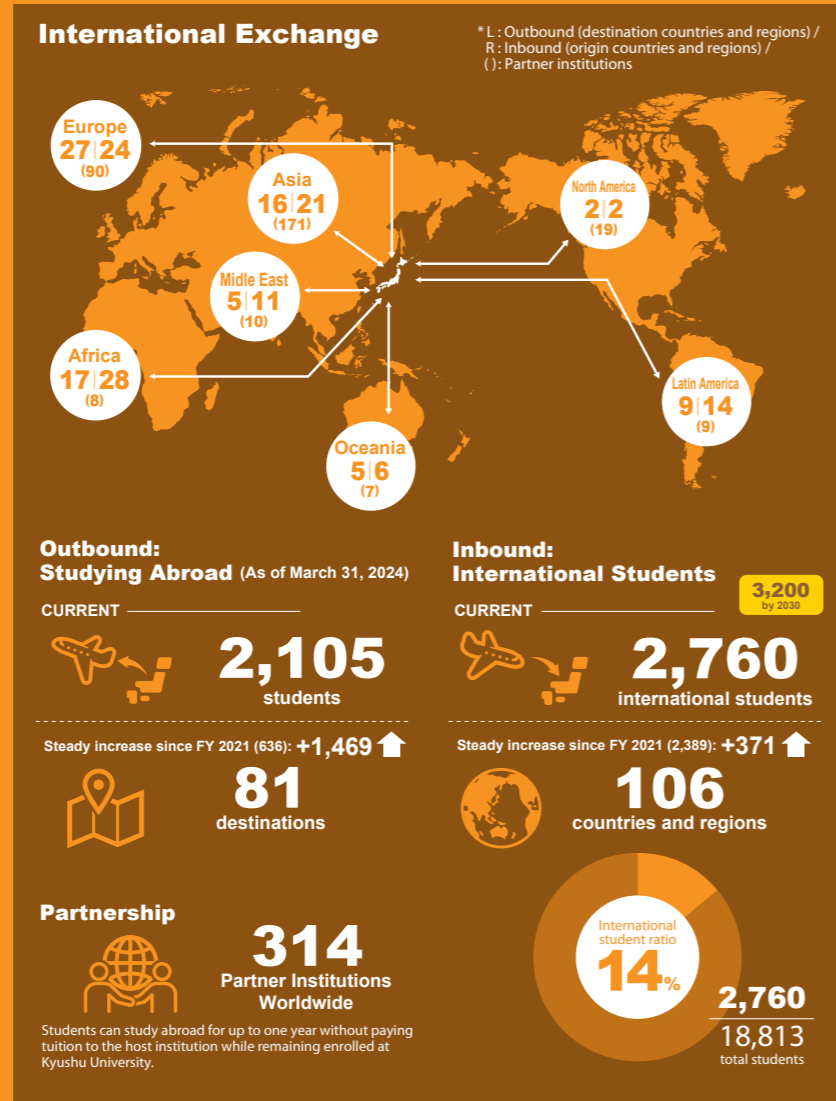
**2**  
Joint degree programs

**Largest single campus in Japan**  
272 hectares (672 acres)

**67<sup>th</sup> IN THE WORLD**  
— THE Interdisciplinary Science Rankings 2026

## International Engagement

International engagement is a key element of Kyushu University VISION 2030. The university actively promotes study abroad programs to foster globally minded students, while advancing two-way international exchange through strong partnerships with institutions worldwide. By linking student mobility with collaborative education and research, Kyushu University strengthens its contribution to global society.



## International Locations



## Stockholm Liaison Office (Sweden)

### The Only 1 overseas office with a permanent administrative staff dispatched from Kyushu University.

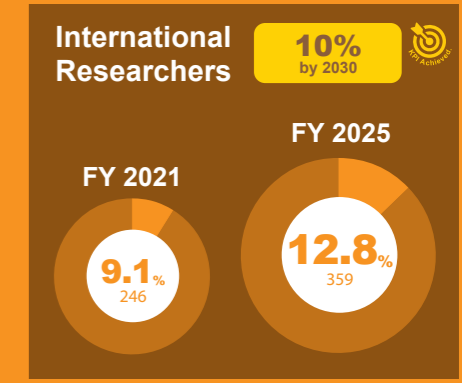
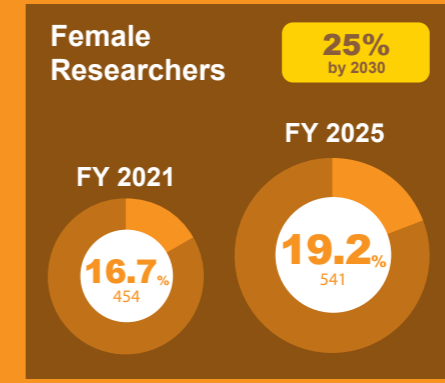
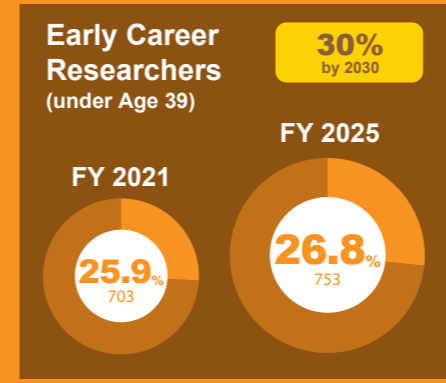
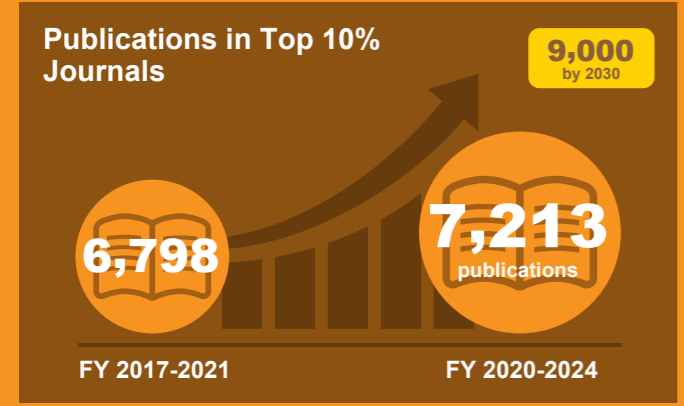
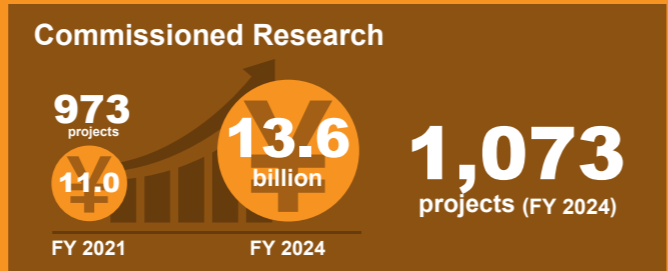
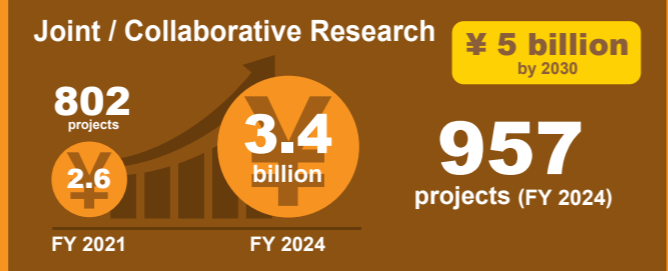
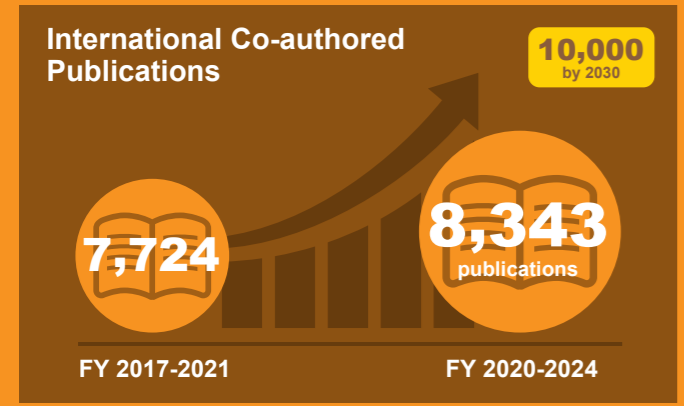
The Stockholm Liaison Office serves as Kyushu University's Europe Office. Acting as a "conciierge," it actively promotes strategic initiatives between Kyushu University and partner institutions across Europe. The office also collaborates closely with local counterpart organizations such as JSPS Overseas Offices and Japanese embassies. Its key areas of support include:

- Academic & Research Collaboration  
*e.g.) Student Mobility Program with the Karolinska Institute; MIRAI Young Researchers' Program*
- International University Networks  
*e.g.) MIRAI: Japan-Sweden; RENKEI: Japan-UK*
- Engagement & Outreach  
*e.g.) Symposia and webinars with European institutions; Europe alumni network; A sustainable Japan-Europe academic exchange platform (Fika-JA)*
- Joint Research and External Funding in Europe  
*e.g.) Partnership with CNRS: IRL OPHELIA is an international research laboratory (IRL) established between CNRS and Kyushu University in 2026*

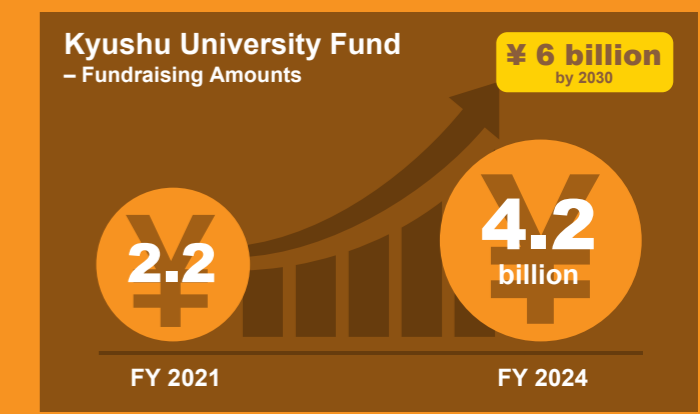
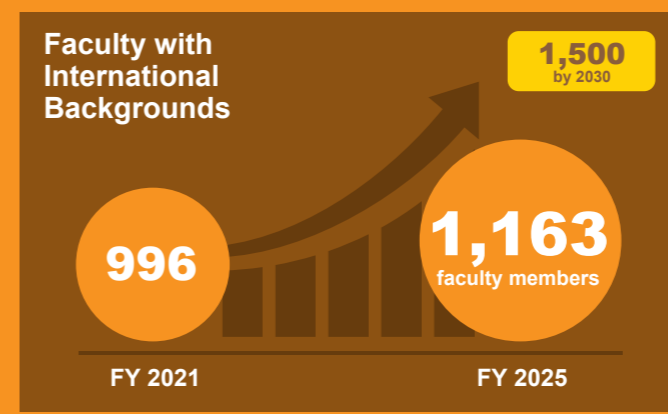
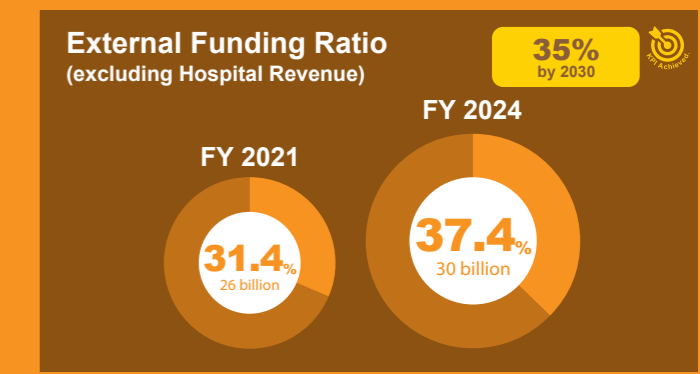
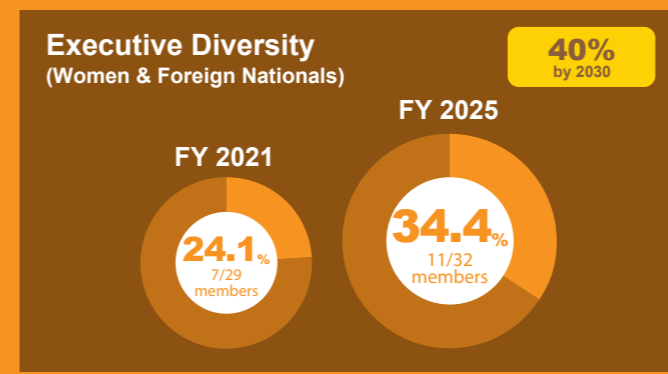
# Fast Facts

## Research and Education Diversity

Kyushu University advances research and education diversity by expanding the backgrounds and careers of its members, enhancing governance, and strengthening its capacity for innovative decision-making. Kyudai OIP Inc. accelerates this transformation through international and industry collaboration, global talent engagement, and strategic insights that support institutional management. These efforts foster an environment where diverse researchers can achieve excellence and generate new value.



\*Figures are based on the total number of researchers: 2,713 in FY 2021 and 2,812 in FY 2025.



# University in the Community

Kyushu University actively engages with the community by offering diverse resources and services that enhance education, support research, and foster collaboration beyond campus. These initiatives contribute to societal development while enriching both students and the wider community.



## Library

**4.25 million items**

- Collection Creating Academic Research at a Global Standard
- Open Space Fostering Creativity and New Ideas
- Environment Conducive to Active Learning

(As of March 31, 2025)

## Museum

**7.5+ million items**

University Museum and other facilities keep collections including world-class insect collection of more than 4 million specimens.

## Hospital

**1,372 hospital beds**

- Accreditation for Internationalization (JIMP)
- Quality Achievements Award 2023 (ESQR)
- World's Best Hospitals 2024 (Newsweek)

(As of March 31, 2025)

## Forests

**7,145 ha**

University forests in Hokkaido, Miyazaki and Fukuoka are valuable assets to Kyushu University serving as essential fields for research and education.

## Accommodation

**9**

**dormitories for international students**

**5**

**housing facilities for international researchers**

Kyushu University offers on-campus housing where international students can live alongside Japanese students. Additionally, various off-campus housing options are available. The university also provides housing facilities for international researchers, offering dedicated accommodation to support the living needs of visiting scholars and researchers.



64

universities of the Pacific Rim

APRU, the Association of Pacific Rim Universities, is a network that brings together thought leaders, researchers, and policy-makers to exchange ideas and collaborate on practical solutions to the challenges of the 21st century. Within this network, Kyushu University has demonstrated its strong presence through active engagement in leadership-level dialogues and through students' participation in educational programs such as the SDG4GC program. In 2025, three students from Kyushu University took part in the SDG4GC program, further strengthening the university's contributions to APRU's educational initiatives.

**Forest Ecosystem Living Lab Initiatives (FELLI)**

Among APRU's initiatives, the Forest Ecosystems Living Lab Initiative (FELLI), launched in 2024, is a major new effort connecting member universities through forest ecosystem living labs that promote sustainable forest management, biodiversity conservation, climate resilience, and human-nature coexistence. Through joint research, student involvement, and policy discussions, FELLI aims to deliver practical benefits for society and the environment.

Kyushu University is one of the member universities selected for their strong forest research strengths and plays a leading role in the initiative. In October 2025, Kyushu University joined a FELLI workshop hosted by Universidad San Francisco de Quito in Ecuador, where member institutions discussed concrete strategies for addressing forest ecosystem challenges. Through such activities, Kyushu University continues to advance sustainable forest research and international collaboration within the APRU network.



17

universities from Sweden and Japan

MIRAI is a network of Swedish and Japanese universities dedicated to fostering long-term research collaboration and promoting research excellence. In January 2024, MIRAI entered its third phase (2024–2026), with Kyushu University taking a leading role as the coordinator of the Japanese member universities. Leveraging this leadership position, Kyushu University has led initiatives such as the MIRAI Global Challenges Internship and will host the large-scale conference "R&I Week" in December 2026.

**Global Challenges Internship (Study Visit) Program held in Gothenburg**

In November 2025, the MIRAI Global Challenges Internship was held in Gothenburg, bringing together 15 early-career researchers and doctoral students from 12 universities in Japan and Sweden, including two students from Kyushu University. Led by the Kyushu University Stockholm Liaison Office and co-organized with the University of Gothenburg with support from the Scandinavia–Japan Sasakawa Foundation, the program promoted industry-academia collaboration on global challenges.



11

universities from UK and Japan

RENKEI, the Research and Education Network for Knowledge Economy Initiatives, is a pioneering platform for research collaboration between the UK and Japan, fostering multilateral and interdisciplinary cooperation particularly in the priority areas of climate change and health. Kyushu University has been actively engaged since RENKEI's establishment in 2012. This commitment was demonstrated in December 2024, when the university hosted an onsite workshop for RENKEI researchers on climate change and energy.

**Advancing Just Transitions Through UK–Japan Collaboration**

Building on the outcomes of the Kyushu University workshop, Durham University and Newcastle University co-hosted two follow-up events—Transitions in Northeast England Day and Just Transitions to a Net Zero World—in May 2025. Four representatives from Kyushu University participated: a Vice President, a faculty member, a student, and a staff member from the Stockholm Liaison Office.

# Strategic Partnership

Kyushu University is striving to become a hub for international talent circulation through institution-level collaborations, in alignment with Kyushu University VISION 2030. To realize this vision, built on a wide network of partner institutions worldwide, Kyushu University is establishing strategic partnerships to enhance educational and research collaborations with selected institutions.



## University of Illinois Urbana-Champaign

### Strategic partner since 2019

Kyushu University and the University of Illinois Urbana-Champaign (UIUC) have proactively worked to enhance collaboration. These efforts include funding for focused research areas, fostering dialogue at leadership and faculty levels, as well as facilitating student and administrative staff exchanges.

## National Taiwan University

### Strategic partner since 2023

Kyushu University and the National Taiwan University (NTU) formalized their strategic partnership during the visit of the NTU President, who delivered a speech at Kyushu University's commencement ceremony in 2023. The two universities subsequently concluded a strategic partnership agreement aimed at deepening and expanding exchanges, particularly in student mobility.

## Seoul National University

### High priority partner since 2019

Kyushu University and Seoul National University (SNU) took their first step toward strengthening collaboration by holding a joint symposium, with the first event taking place in 2020. Since then, their partnership has steadily developed, and in November 2025, Kyushu University served as the host for that year's joint symposium.

## UNIQ (The Universities: National Taiwan University, University of Illinois Urbana-Champaign, Kyushu University)

Building on their strong record of collaboration as strategic partners, UIUC, NTU, and Kyushu University jointly established a trilateral university center, officially launched with an MoU signing ceremony at NTU in February 2024. To further expand and deepen research-centered international collaboration, the alliance held successful workshops and meetings at UIUC in November 2024. In March 2025, Kyushu University hosted The UNIQ Trilateral Alliance Workshop, strengthening academic exchange among the three institutions. This was followed in July by the launch of the UNIQ Trilateral Alliance Seed Funding, through which seven projects were selected for support. These initiatives aim to broaden the network of researchers and reinforce the trilateral partnership. Looking ahead, additional workshops and related meetings are scheduled to take place at NTU in 2026, continuing the alliance's efforts to advance strategic collaboration.





**Kyushu University Website**  
[www.kyushu-u.ac.jp/en/](http://www.kyushu-u.ac.jp/en/)



**More Fast Facts**  
[www.kyushu-u.ac.jp/en/university/data/](http://www.kyushu-u.ac.jp/en/university/data/)



**International Affairs Portal  
Global Gateways**  
[www.isc.kyushu-u.ac.jp/intlweb/en](http://www.isc.kyushu-u.ac.jp/intlweb/en)



**Life in Kyushu University  
-Invitation to Kyushu University-**  
[www.isc.kyushu-u.ac.jp/invitation/](http://www.isc.kyushu-u.ac.jp/invitation/)

