



**New Basic Principles Aimed at the Next 100 Years**

**Kyushu University Action Plan 2015-2020**

Kyushu University Education Charter

Kyushu University Research Charter

On the occasion of the 100th anniversary of the founding of Kyushu University (in 2011), the mission of the university for the next 100 years was announced and an action plan was established to achieve its goals

躍進百大

Kyushu University leaps into the world's top 100 universities in every field

**The Mission of Kyushu University**

Through continual internal reform and quality education at an international level, we aim to be a top-level education and research hub marked by vitality and a willingness to address the issues that will confront us in the future.

- I** Conducting research at the highest global standard and encouraging innovation
- II** Fostering global talent
- III** Contributing to the local and international communities through advanced medical care
- IV** Developing an enhanced campus that students, staff, and faculty members can be proud of
- V** Organizational reform
- VI** A university that develops in tandem with society

**Key initiatives**

Institute for Asian and Oceanian Studies, Kyushu University Platform of Inter/Transdisciplinary Energy Research

School of Interdisciplinary Science and Innovation

- Encouraging innovation through **the establishment of a Research and Education Institute**
- Fostering global talent through **the establishment of a new undergraduate school**
- Further revitalization of Kyushu University through **reorganizing and strengthening the functions of various fields of study, especially in the social sciences and humanities**

Joint Education Program for Undergraduate Students in the Four Schools of Letters, Education, Law, and Economics; Humanities Collaborative Research and Education Commons





FY2016

FY2017

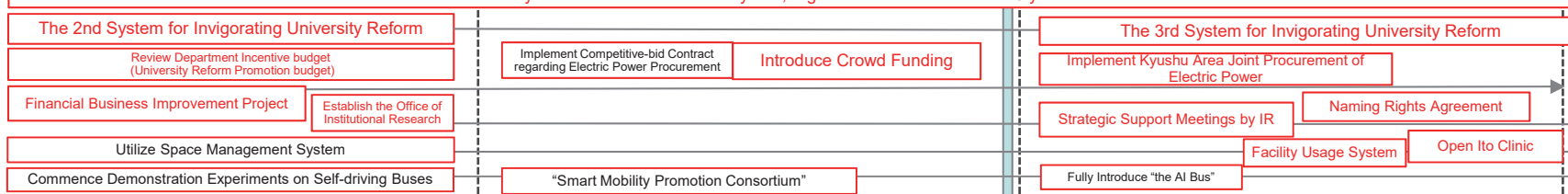
FY2018 (Relocation Complete)

2019, 2020, 2021

Creation of a "Kyushu University Function-Strengthening System" for Autonomous Innovation / Flexible and Optimal Distribution and Redistribution of Resources by the Entire University Working Together as a Global Research and Education Hub

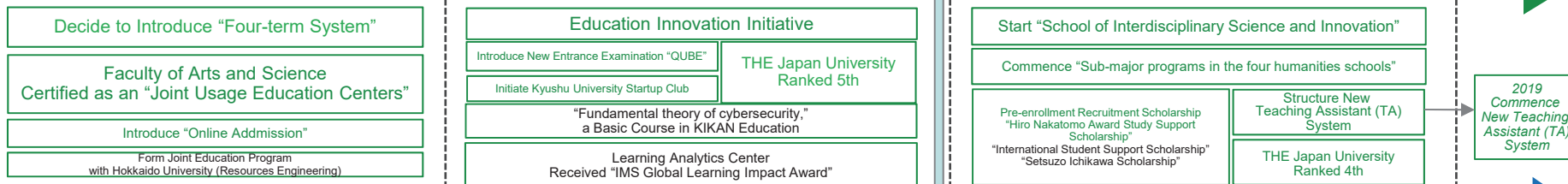
System for "Evaluation in five years, organizational review within 10 years"

Business Operation  
Finance Improvement, etc.



Establishment of "New Undergraduate Schools" and Other Reforms to Promote the Internationalization of Education / Insuring the Quality of Education / High School and University Articulation Reforms

Education



Promoting Outstanding Worldclass Research / Strengthening of Support and Fostering of Interest in Fundamental Research for the Creation and Development of New Research Fields / Strategic Acquisition of Competitive Funding

Research



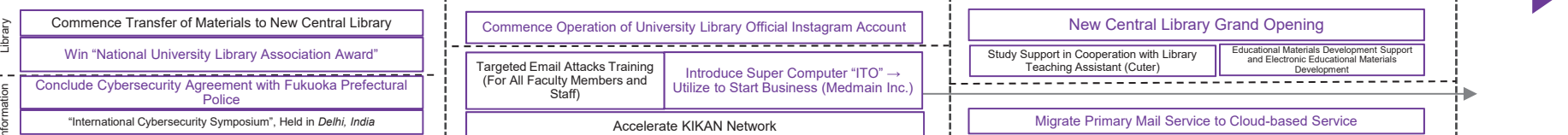
Realizing our goal of becoming a Global Hub Campus / Cooperation between Industry, Academia and the Public, and Regional Revitalization

International and Social Collaboration



Creating an Education, Research and Medical Treatment Environment Focused on Safety, Peace of Mind, and Comfort

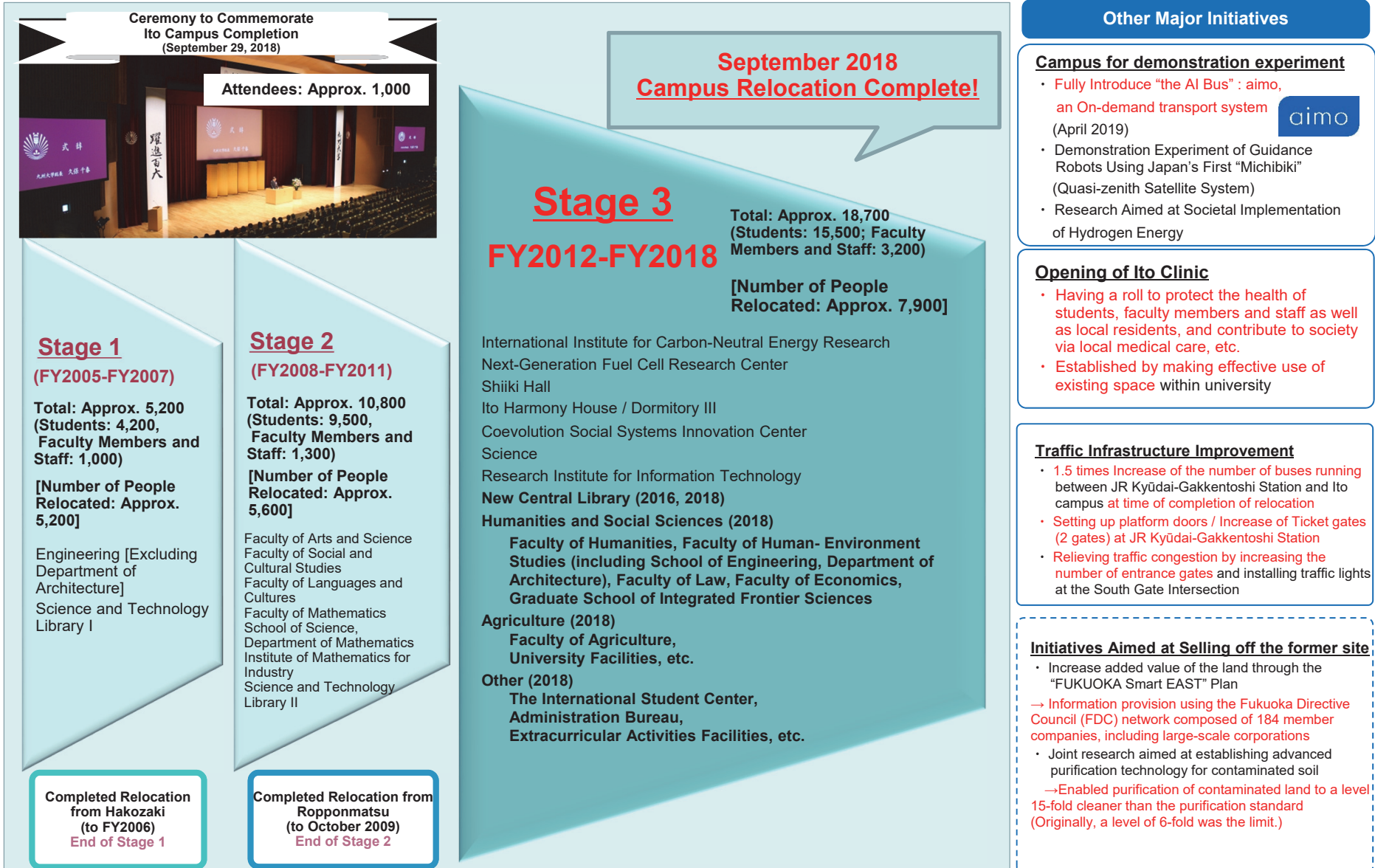
Information Infrastructure





## Campus Relocation

Kyushu University Action Plan 2015-2020 IV 1) Realizing our goal of becoming a "Global Hub Campus" / 3) Creating an Education, Research and Medical Treatment Environment Focused on Safety, Peace of Mind, and Comfort



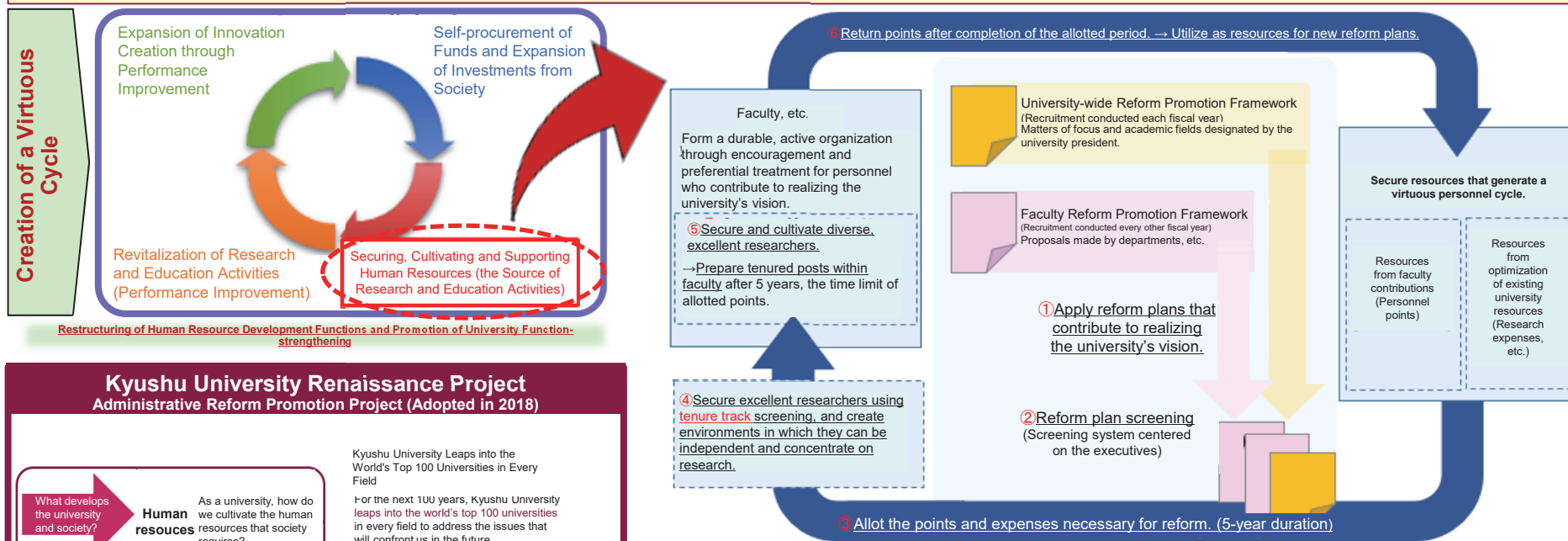


### The 3rd System for Invigorating University Reform

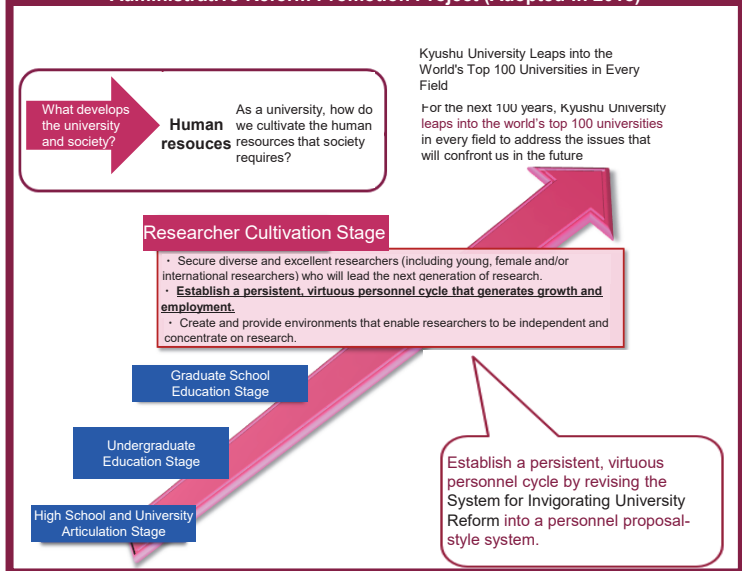
Kyushu University Action Plan 2015-2020 V 2) Creation of a "Kyushu University Function-Strengthening System" for Flexible and Optimal Distribution and Redistribution of Resources

[The System for Invigorating University Reform] Initiative to Promote Autonomous Reform and Revitalize the Organization

- Contributed Personnel Points Necessary for Faculty Member Assignment from each Department → System for Strategic Redistribution of Intra-University Resource taken for a Reform Plan Aimed at University's Future Vision (69 Reform Plans and 146 Faculty Post Re-assignments as Results of Examinations between FY2011 and FY2017)
- Establish the 3rd System for Invigorating University Reform in 2018, Conducted Examinations Using the New System, and even Implemented Point Allocation (9 Reform Plans, 10 Re-assigned Personnel)



### Kyushu University Renaissance Project Administrative Reform Promotion Project (Adopted in 2018)



- [The 1st System for Invigorating University Reform (Examined in 2011)]  
• Contributed 1% annually from each faculty, and first created a framework for re-allocating personnel in response to demands to restructure.
  - [The 2nd System for Invigorating University Reform (Examined in 2015)]  
• Revised into a system able to take university-wide priority initiatives into account by field and by area of research and education. Clarified strategies as a university, improved governance and evolved into a framework for strategic investment of resources.
  - [The 3rd system for Invigorating University Reform (Examined in 2018)]  
• Further revised the system to be more people-oriented. Establish a framework in anticipation of the government policy of "cultivating young human resources."  
• Centered on personnel proposals based on the faculty's vision for the future. (From reorganization-focused to people-oriented)  
• Securing and cultivating diverse and excellent researchers (including young, female and/or international researchers) who will lead the next generation of research kept in mind as a goal.  
• Set a time limit on personnel points assigned. → Greatly relieved the burden on faculty to contribute points. (Resolved 1% annual contribution. (Set a 5-year time limit on personnel points assigned with the assumption that personnel would become tenured faculty members within the department during that time.)
- A "people"-oriented strategy, which is the direction of future administrative reforms at Kyushu University.  
Initiative that forms the core of the "Researcher Cultivation Step" within the "Kyushu University Renaissance Project"

**Initiatives Aimed at Strengthening the Financial Base (Proactive measures to Increase Income and Thorough Measures to Reduce Expenses)**

Kyushu University Action Plan 2015-2020 V 2) Creation of a "Kyushu University Function-Strengthening System" for Flexible and Optimal Distribution and Redistribution of Resources

**[Active Measures to Increase Income]**

New Measures to Increase Income, Effective Usage of Assets, Acceptance of Donations of Real Assets, Acquisition of External Funds, etc.

**[Thorough Measures to Reduce Expenses]**

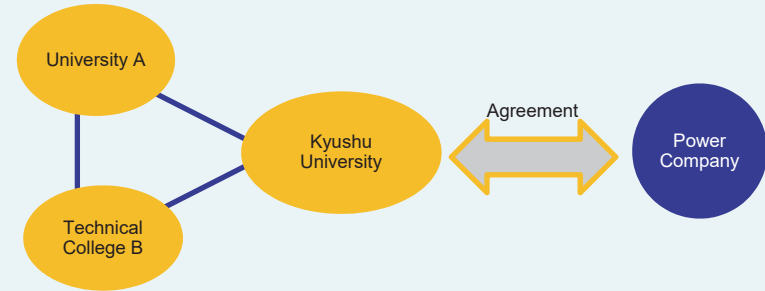
Joint Procurement of Electric Power, Financial Business Improvement Projects, Energy Conservation, etc.

**[Measure to Increase Income-①] New Measures to Increase Income**



- ◆ **Crowd Funding:** Introduced not only as a way to secure funds but also for the purpose of PR and information provision as well as promoting understanding among the nation's citizens, with regard to the university's education and research activities. Implemented 7 projects and acquired roughly 21 million JPY.
- ◆ **Naming Rights:** Concluded 3-year agreements totaling 2 million JPY annually by publicly offering information study rooms utilizing companies' need of naming rights agreements of "personnel affairs and recruitment purposes" for narrowly targeted university spaces as an initiative that aids Kyushu University students in finding employment while simultaneously increasing income.

**[Measure to Reduce Expenses-①] Joint Procurement in Kyushu Region**



Due to complete removal of restrictions on the retail sale of electric power, **national universities and advanced technical colleges within the jurisdiction of the Kyushu Electric Power Company conducted joint procurement through general competitive bidding** of electric power agreements, for which contractual parties used to be stipulated by law.

➡ **Expenses Reduced by a Total of 175 million JPY.**

**[Measure to Increase Income-②] Effective Usage of Assets**

**Current**

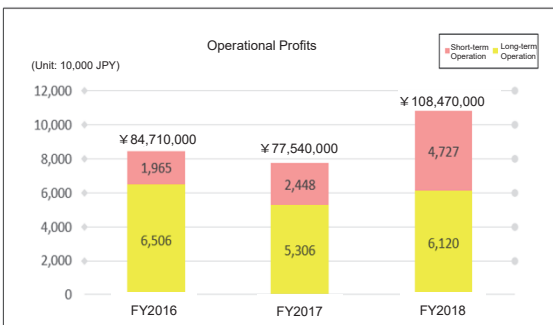
( Savings National bonds, municipal bonds, etc. )

**Future**

( Foreign currency, investment trusts, financial trusts, etc. )

Purchased bonds, including national bonds, and managed assets, including fixed deposits (operational rate: Approx. 87%), using surplus on hand with no immediate payments scheduled, such as donations, as source revenue.

➡ Acquired roughly **108 million JPY of investment earnings**.  
 ➡ Moving forward, we plan to expand asset operation from financial products with principal guarantee to highly-profitable financial products.



**[Measure to Increase Income-③] Acceptance of Donations of Real Assets**

Established an "Exception Fund for Donated Resources, etc." **within the Kyushu University Fund as a fund certified by Minister of MEXT for the purpose of expanding donations of real assets from individuals.**

➡ Received privately owned land (Nishi Ward, Fukuoka City) in December 2018 ahead of any other national university due to an offer of a donation of real assets from an individual. (470.61 m<sup>2</sup> = Roughly the size of 2 tennis courts)

Easing of the tax-exemption requirements regarding Deemed Transfer Income Tax.



**[Measure to Reduce Expenses-②] Financial Business Improvement Project**

Implement the Financial Business Improvement Project continuously, and examine business improvement measures with regard to continuing projects.

- Expenditure contract procedures
- Revision of decision-making authority
- Simplification of donation application procedure

The aforementioned are expected to reduce office costs by more than 10,000 hours annually for both the portion implemented in 2018 and the portion scheduled for 2019.

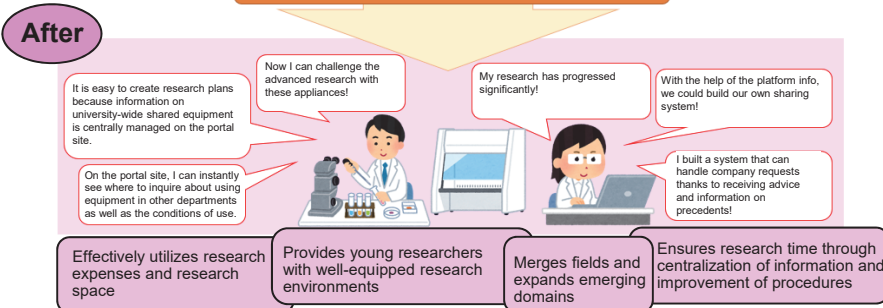
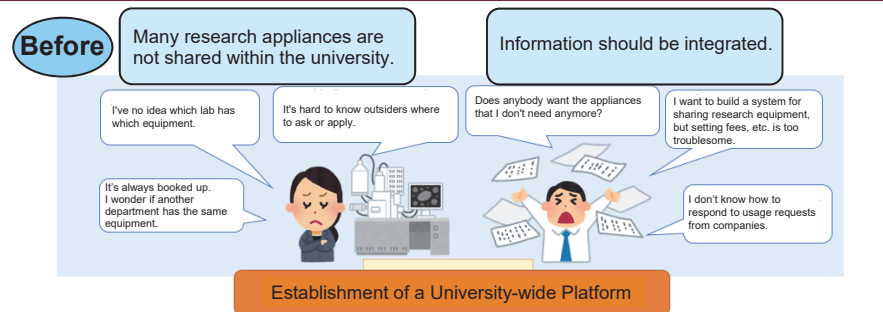
➡ Newly established a Business Reduction Review Meeting relating to personnel affairs to apply to other departments.  
 → Compiled 56 improvement measures and implemented 4 improvement measures during FY 2018.



### The Establishment of the Platform for Shared Research Equipment and Facilities.

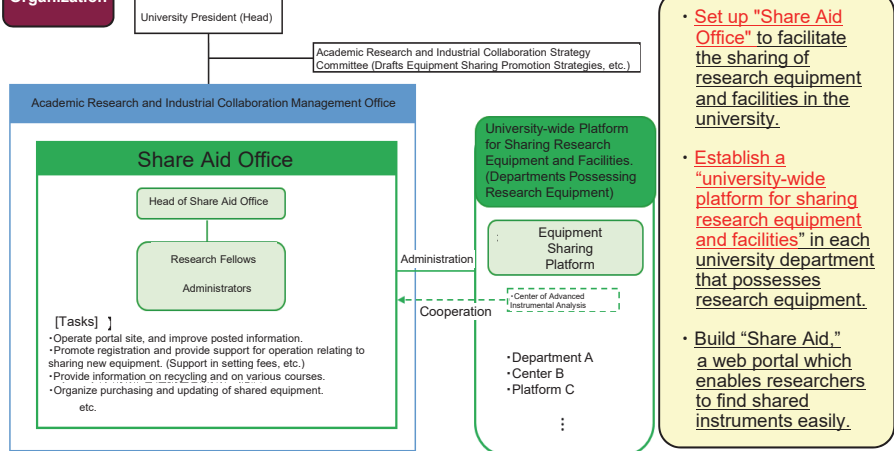
Kyushu University Action Plan 2015-2020

V 2) Creation of a "Kyushu University Function-Strengthening System" for Flexible and Optimal Distribution and Redistribution of Resources



- Improves research capacity through university-wide joint usage of research equipment
- Alleviates "inward-looking tendencies" by crossing the boundaries between research laboratories

#### Organization



### Formulation of Facility Usage System

Kyushu University Action Plan 2015-2020

V 2) Creation of a "Kyushu University Function-Strengthening System" for Flexible and Optimal Distribution and Redistribution of Resources

#### Establish "Space Management System"

[Map Screen (Floor Plan)]

6. Room Selection

Select room.



Building System within Internal Network

→Accurately grasp the area used by each department and its actual conditions through input by each faculty member on their own.

- Vacant Room: Registerable room
- Own Room: Personally registered rooms for which facility usage registration is complete.
- Pending: Personally registered rooms that still undergoing registration in the system.
- In Use: Rooms requested by another party for which facility usage registration is complete.
- Under Request: Rooms requested by another party that are still undergoing registration in the system.

Establish a "Facility Usage System," stipulated in the Mid-term Plan, within the "policies on effective utilization of facilities, etc. at Kyushu University."

- This is a breakthrough policy that eliminates monopolies and vested interests relating to department spaces, which had been fixed within the university for a long time, by efficiently managing and operating spaces using strategic facility management policies under the basic concept of "facilities are assets shared by the entire university."
- Enables flexible responses to demand for facilities, generated due to new developments of diversifying education and research activities, without building or expanding facilities through effective use of existing space.
  - Compatible with new organizations created through the System for invigorating University Reform, etc.
  - Response to demands generated due to the start of new organizations (Measure to handle the start of the Institute for Asian and Oceanian Studies (Secured 320m<sup>2</sup> from university-wide rental spaces), etc.)
  - Response to demands for joint usage facilities (Opening of the Ito Clinic (Secured 148m<sup>2</sup>), etc.)

#### Establishment of "Facility Usage System"

- Determine the standard area per faculty member and student. Figure out the area allotted for each department based on the number of faculty members and students.
- When the "space used for education and research infrastructure" exceeds the "amount of space allotted":
  - Usage Space (Education and research infrastructure space)
  - Excess Space
  - Allotted Space (Education and research infrastructure space)
- When the "space used for education and research infrastructure" is less than the "amount of space allotted":
  - Usage Space (Education and research infrastructure space)
  - Insufficient Space
  - Allotted Space (Education and research infrastructure space)

Excess space is secured as "University-wide rental space" ("university-wide management space" and "space to be used at the discretion of the university president"). Used in strategic management or considered subject to billing.

When there is insufficient space, "university-wide rental space" is allotted.

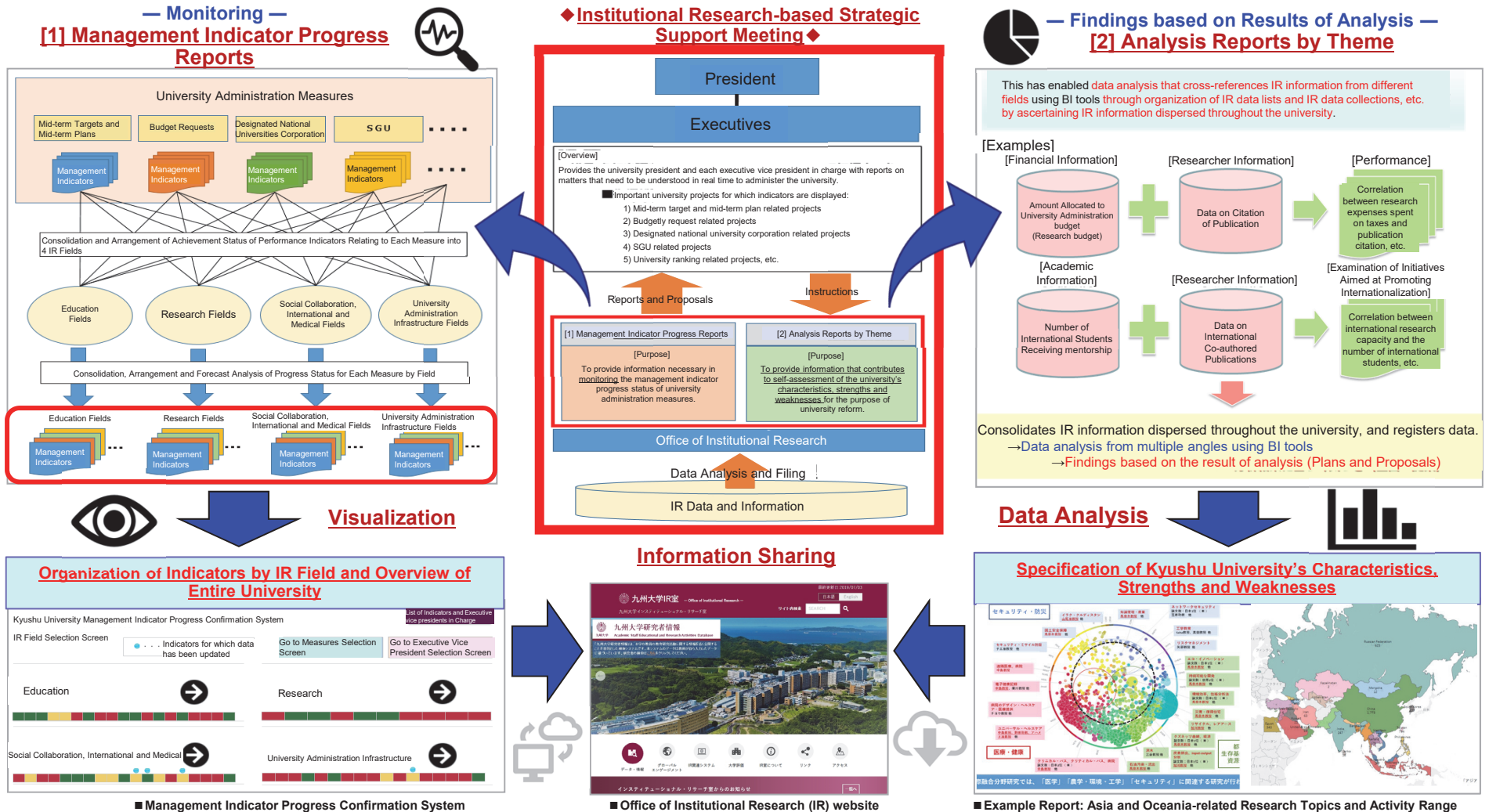
**Establishment of “Institutional Research-based Strategic Support Meeting” (Expansion of IR Activities Aimed at Improving University President and Executive Support)**  
 Kyushu University Action Plan 2015-2020 V 1) University-wide, Integrated, Internal Reform as an International Research and Education Hub

**[Purpose of Establishment]**  
 To **improve the framework for contributing to evidence-based university administration** by establishing routes to provide the university president and executives with information.

**[Overview]**  
 The university president and executives are regularly provided with **“Management Indicator Progress Reports”** and **“Analysis Reports by Theme”** based on the result of data analysis conducted by the Office of Institutional Research, and when necessary, instructions from the president and executives are used in improving future analyses and reports.

**[Main Achievements in FY2018]**  
**“Management Indicator Progress Reports”**  
 ✓ Visual representation of the achievement status across multiple measures → Facilitates understanding problems → Accelerates the decision-making processes by the Executive vice president in charge.

**“Analysis Reports by Theme”**  
 ✓ Specify Research Flagships  
 ✓ Cluster candidate selection aimed at establishing the Institute for Asian and Oceanian Studies, etc.



## First Class of Students to Enroll in the School of Interdisciplinary Science and Innovation

Kyushu University Action Plan 2015-2020 II 1) Establishment of New Undergraduate School and Other Reforms to Promote the Internationalization of Education

### [School of Interdisciplinary Science and Innovation]

- The 12th school and established by Kyushu University for the first time in 50 years.
- **Reviewed the enrollment capacity of existing undergraduate schools and secured the number of capacity (105 students).**
- **Assigned a diverse range of faculty members (50 full-time and 29 part-time) from 21 departments** based on the graduate school and faculty system.
- **Cultivation of human resources able to solve problems by integrating together diverse areas of expertise** through advanced communication skills and extensive knowledge across multiple existing categories of study.

#### Acceptance of a Broad Range of Students

- ✓ **4-Pattern Entrance Examination** using the New Entrance Examination - QUBE
- ✓ 108 students from 486 applicants selected for the initial class
- ✓ **104 students enrolled** in April 2018.
- ✓ Entrance examination for the second class also had high number of applicants per place (4.25 applicants to places)

#### Overseas Study required for Japanese Students

<b>Exchange Students</b> (2nd - 4th years)	<b>Overseas Internships, Overseas Volunteer Work, Overseas Field Surveys, etc.</b> (1st - 4th years)	<b>Short-term Overseas Study or Training</b> (1st-4th years)
---	--	---

- ✓ 52 students in the initial class already studied overseas during the first year.
- ✓ **Employed 2 faculty members** as Overseas Study Coordinators through the **System for Invigorating University Reform**. In 2018, visited 26 overseas universities and **concluded Inter-faculty Exchange Agreements with 7 universities.**

The number of universities for overseas study through inter-university foreign exchange:  
**114 universities**  
26 countries and regions  
(As of January 2018)

#### New Entrance Examination - QUBE

Kyushu University (QU)  
Border Crossing Entrance

#### University Adaptation-oriented: 20 students

(21st Century Entrance Examination Model) Ratio of applicants to places  
[2018] 10.4 applications per opening → [2019] 7.25 applications per opening

#### Accelerated Learning: 10 students

(High School and University Collaboration Model)  
[2018] 4.5 applications per opening → [2019] 4.6 applications per opening

#### International Experience and English Ability-oriented: 10 students

(International)  
[2018] 2.9 applications per opening → [2019] 4.5 applications per opening

#### Written Scholastic Ability-oriented: 65 students

(Scholastic Ability-oriented)  
[2018] 3.14 applications per opening → [2019] 3.23 applications per opening

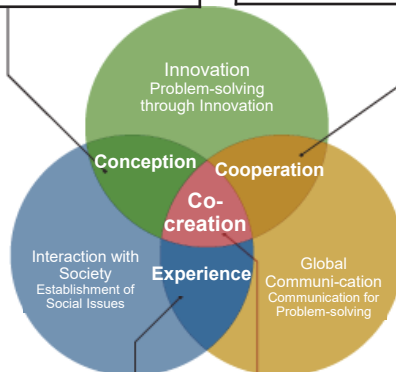
Capacity: 105 students

#### Problem Conception Ability

The ability to appropriately define problems and find solutions by integrating existing academic knowledge in order to deal with current issues.

#### Cooperation Ability

The ability to create feasible solutions by discussing devised solutions with others and cooperating in a way that incorporates the knowledge and abilities of others.



#### International Communication Ability

The ability to obtain understanding and cooperation by explaining to multiple people the details of a problem in a field where it occurs in order to execute solutions.

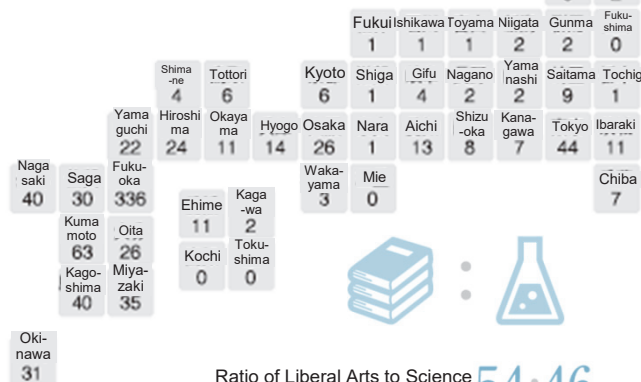
#### Co-Creative Problem Solving Ability

The ability to engage in actual solutions by integrating the four necessary abilities of "Active Learning Ability," "Problem Conception Ability," "Cooperation Ability," and "International Communication Ability" in order to realize the principle of "co-creation."

#### Status of Applicants to Date (2018 and 2019)

China = 19  
America = 15  
South Korea = 19  
Indonesia = 9  
Taiwan = 3  
Malaysia = 2  
Mongolia = 1

Singapore = 2  
Thailand = 1  
The Philippines = 1  
India = 1  
Guatemala = 1  
Peru = 1





**Establishment of Kyushu University "Institute for Asian and Oceanian Studies" by Kyushu University as a Whole**  
Kyushu University Action Plan 2015-2020: 1) Promoting Outstanding Worldclass Research

**Organization to Promote Systematization of Research and Education Activities in each Research Field Highly-rated Around the World as Kyushu University's Strengths and Characteristics**

**Kyushu University Institute for Asian and Oceanian Studies**  
(Established in April 2019)

**Organization gathered Kyushu University's researchers from multiple fields, searching for Solutions and New Developments with regard to Social Issues Faced by Asian and Oceanian Regions**

[Background of Establishment]

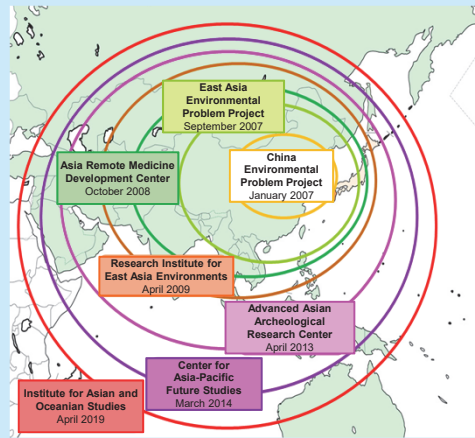
Promoting Outstanding Worldclass Research as declared in the "Kyushu University Action Plan 2015-2020"

➡ Asia and Oceania are deeply connected with Kyushu University geographically and historically, and these regions are important in Kyushu University's international strategy.

➡ Kyushu University Institute for Asian and Oceanian Studies was envisioned as a compilation utilizing the results achieved by the entire university at the maximum through expanding spheres of activity while reorganizing over 10 years in Asia and Oceania.

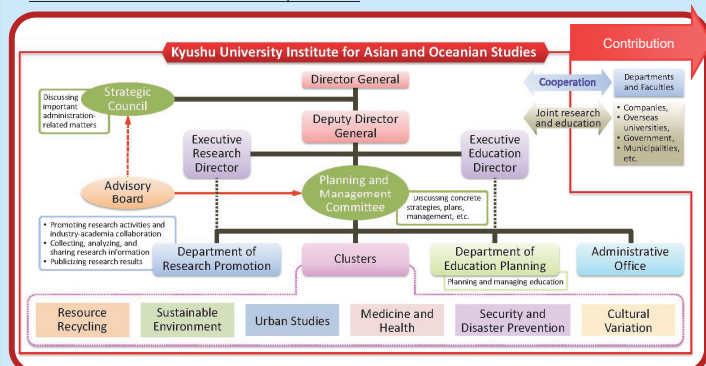
[Structure and Purpose]

- Director General = University President; Deputy Director General = Executive Vice President and Senior Vice President → Powerful Governance System
- To develop on-demand and on-site research and education activities in which research groups that merge multiple fields together across specializations collaborate with overseas universities, research institutions, government institutions and municipalities.
- To contribute to solving or mitigating social issues which are occurring, or expected to be faced tomorrow, in Asia and Oceania, and to cultivate truly international human resources through education.
- ➡ To contribute to realization of a sustainable society as published in the SDGs, and to realization of an idealized, sustainable society further in Future SDGs.



[FY2018 Initiatives toward Establishment]

- Kyushu University faculty members engaged in Asia and Oceania-related research were analyzed, and of the roughly 2,000 faculty members, nearly 30% were found to be involved.
- Recruitment was conducted as Critical Support Fields within the "Specified Domain Enhancement Project," a part of the Intra-university Support System QR Program, in order to extract social issues, etc. that should be tackled by the university as a whole. This institute is composed of total 6 clusters, including 5 clusters organized out of the 27 research and education fields that applied and 1 additional cluster aimed at enhancing the Humanities and Social Sciences under university president's leadership.
- More than 100 faculty members engaged in Asia-related research and education are involved.
- After establishing the institute, a post of full-time professor as a research promotion director was in place at university president's discretion, to serve as the core of the "Research Promotion Department."



\*Clusters are composed of multiple modules (interdisciplinary research groups engaged in identifying and solving specific social issues).



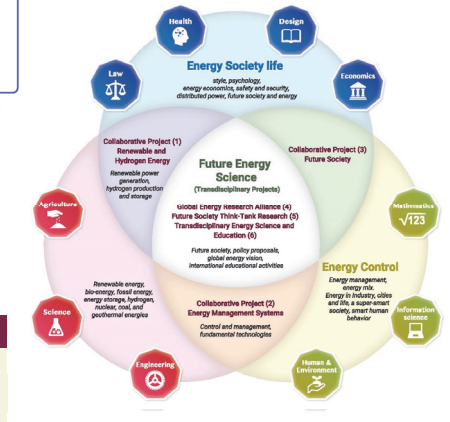
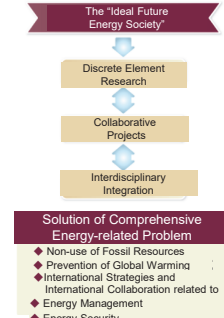
~And on into the future~  
**Future SDGs**



■ Kick Off Symposium Held on July 10.

**Kyushu University Platform of Inter / Transdisciplinary Energy Research** (Established in October 2016)

**Realization of "Ideal Energy Society in the Year 2100" by all Kyushu University.**



**Hosting "Kyushu University Energy Week"**

This symposium was participated in by energy-related departments at Kyushu University to serve as a venue for researchers to exchange in order to function as an international hub for energy research. In FY2018, international workshops and invited lectures by famous researchers were held for five days with a total of roughly 1,900 participants. (Hosted every year from 2016 to 2018)

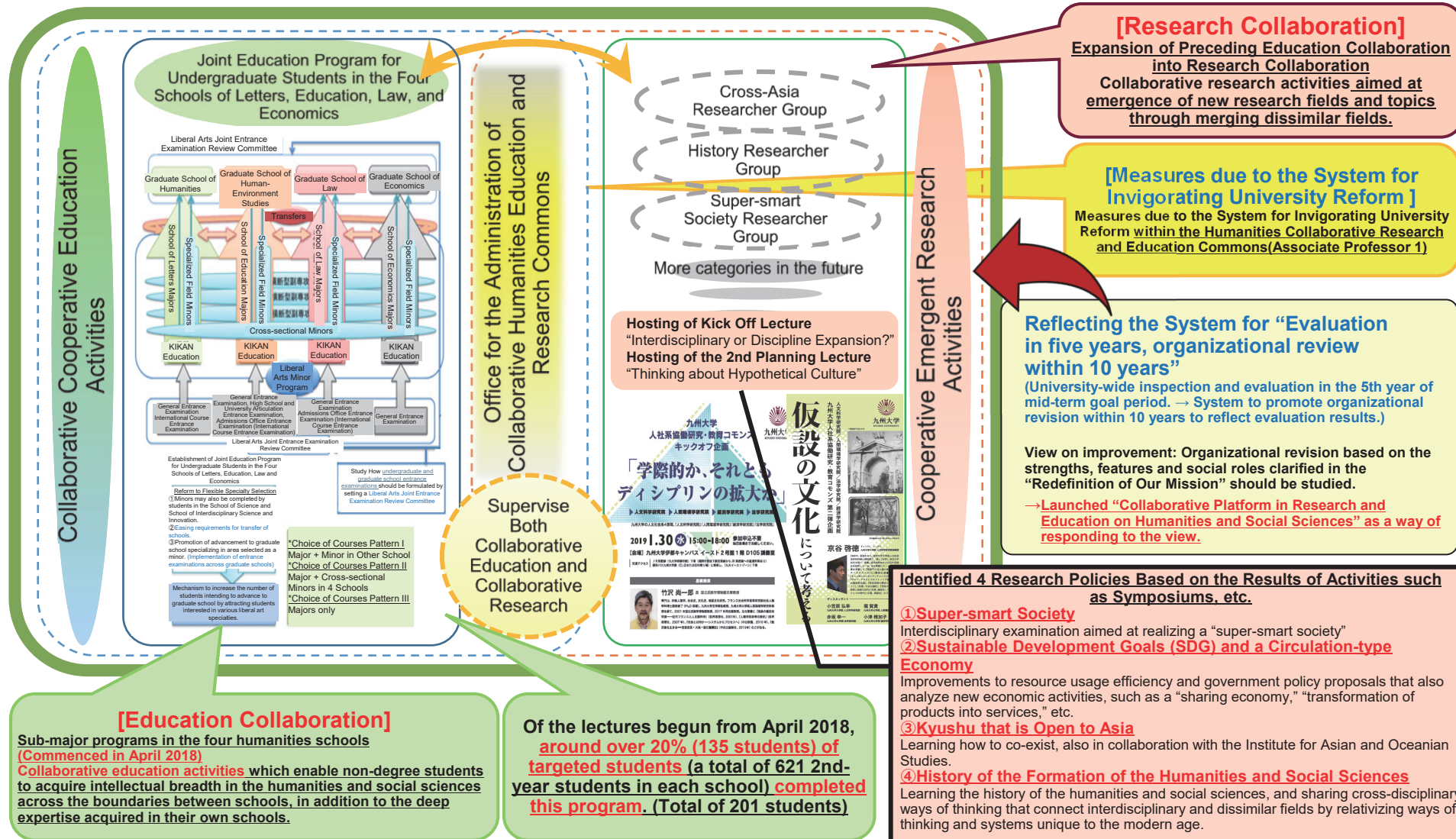




**Establishment of "Collaborative Platform in Research and Education on Humanities and Social Sciences"**

Kyushu University Action Plan 2015-2020 | 2) Strengthening of Support and Fostering of Interest in Fundamental Research for the Creation and Development of New Research Fields

**Collaborative Research and Education Platform Supporting Both Education Collaboration and Research Collaboration for the 4 Liberal Arts Departments (School of Letters, School of Education, School of Law and School of Economics) Establishment of Collaborative Platform in Research and Education on Humanities and Social Sciences**



**Hold World's Largest-scale International Conference**

Kyushu University Action Plan 2015-2020: I 1) Promoting Outstanding Worldclass Research

**Invitation of Large International Meetings Based on the Policy of Actively Sponsoring and Inviting Major International Meetings**

**Held for the first time in East Asia**

**The 20th Congress of the International Academy of Comparative Law**

(July 22 - 28)

- ✓ The largest meeting in the world within the field of law, held once every four years.  
(Organization Committee Chair: Distinguished Professor Toshiyuki Kono (ICOMOS Chair, Alexander von Humboldt Foundation Reimar Lüst Award recipient)
- ✓ 832 participants from more than 60 countries.



**Held for the first time in Asia**

**「World Social Science Forum (WSSF) 2018**

**(4th World Social Science Forum) (September 25 - 28)**

- ✓ One of the most authoritative and influential meetings in international society.
- ✓ Around 1,000 participants from nearly 80 countries, including researchers, government policy makers and journalists.



**For the first time in Japan**

**“QS APPLE 2019”**

- ✓ Inviting as a part of the Reputation Management (RM) Strategy in the Top Global University Project.
- ✓ Kyushu University to host first QS-APPLE in Japan in 2019 (APPLE : Asia-Pacific Professional Leaders in Education Conference and Exhibition)
- ✓ Around 700 participants expected primarily from institutions of high education in the Asia-Pacific region.



15th Annual Strategic Summit for the Advancement of University Excellence in all its Forms

November 2019 • Fukuoka, Japan



Mandy Mok (left) and Aratono, Executive Vice President and Senior Vice President, exchanging a written agreement



### New Central Library (Grand Opening on October 1)

Kyushu University Action Plan 2015-2020 IV 3) Creating an Education, Research and Medical Treatment Environment Focused on Safety, Peace of Mind, and Comfort

Complete Opening in 2018 as **One of the Largest Libraries in Japan with a Storage Capacity of 3.5 Million Books** under the Basic Concept of a **“Library Supporting the Next 100 Years ~as One of Top Brands in Asia~”** (Total Area: 19,279m<sup>2</sup>; Number of Seats: Approx. 1,400)

#### Dramatic Improvement in Usage Environment through Centralization of Materials

- ◆ **Forms a humanities and social sciences research base** by consolidating roughly 2.4 million humanities and social science resources, which used to be dispersed over multiple campuses.
- ◆ Promotes usage of valuable resources and improves user convenience with **establishment of a semi-rare books room**.
- ◆ Provides centralized access through consolidation of archival resources stored in Manuscript Library.

#### Establishment of Facilities and Systems for Active Learner Cultivation

- ◆ **Provides a range of study spaces** based on usage type.
  - ✓ Active learning space “Cute. Commons” (Approx. 1,000m<sup>2</sup>; Approx. 200 seats)
  - ✓ Seminar Rooms (2), Individual Study Rooms (11)
- ◆ Academic Support Division newly established to **strengthen out-of-class study support and research support**.
- ◆ Library Teaching Assistant (Cuter) assigned to each campus (Hakozaki, Ito, Hospital and Ohashi).
  - ✓ Presentation on the Library Teaching Assistant (Cuter) Study Support Initiative has been given at an international conferences, etc., and **won the Best Poster Award at ALIRG2018**.

Including  
Group Study Rooms (4 Rooms),  
Workshop Space and Open Space



#### Inventive Solutions to Relocation Issues

- ◆ The **effects on study, education and research were minimized** by **conducting the relocation without suspending services** thanks to a **detailed relocation plan** (provision of alternate services and advance opening of the New Central Library).
- ◆ Reusing desks, chairs and book shelves in use prior to relocation **contributed to giving the library a historical atmosphere** while also **reducing expenses**.

#### Characteristic Initiatives at Branch Libraries

- Science and Technology Library: “Improve support for education and research in science fields”  
Completion of relocation consolidates previously dispersed natural science-related resources. Numerous events held, including Experiment Report courses, etc.
- Design Library: Hold “Science Planter,” seminars in a science café format.



### Establishment of Academic Information Infrastructure to Support Education, Research and Study Activities as a Global Research and Education Hub

Kyushu University Action Plan 2015-2020 IV 3) Creating an Education, Research and Medical Treatment Environment Focused on Safety, Peace of Mind, and Comfort

#### Provision of Safe, Secure Advanced Telecommunications Infrastructure and Improvement of Cyber-literacy among Members

##### Development of Advanced Telecommunications Infrastructure

- ◆ Introduction of Internal Network Monitoring System (Enhancement of Security Measures)
- ◆ **Commencement of Operation of Super Computer System “ITO”**
  - ✓ The first system in Japan with functions for users to utilize in the field of Data Science.
  - ✓ In order to leverage these advantages, the system **commenced provision of environments for data analysis via web browsers easy for Windows and Mac users** to operate for the purpose of lowering barriers to entry for new users who are not familiar with operating super computers.

##### Improvement of Cyber-literacy

- ◆ **Conducted training for all faculty members and staff on targeted email attacks**.
- ◆ **Held a cyber security course as a compulsory subject for all 1st-year students university-wide**, and opened multiple courses in the field of “cyber security” in the Graduate School of Information Science and Electrical Engineering.
- ◆ Held enpit2 (for university students) and enpit-pro (for adult members of society) in order to cultivate cyber security experts. (Continuation of the MEXT enpit Program)
- ◆ Held **“Secu-Talk 2019 in Fukuoka.”** (Held jointly with Internet service providers and the Fukuoka Prefectural Police)



Super Computer System “ITO”



Scene of the lecture at “Secu-Talk 2019 in Fukuoka”



## Materializing the Top Global University Project

### Initiatives Related to Education Internationalization

- ◆ Expansion of International Courses  
Newly established international courses in the School of Letters, School of Economics, School of Science and School of Pharmaceutical Sciences.
- ◆ Graduate School Education Reform  
Formulated the “Kyushu University Graduate School Education Reform Policy.” Strongly promoted construction of a system that provides multiple supervising faculty members, improvement of the degree screening system with an emphasis on objectivity by appointing international faculty members and external experts, and formation of the da Vinci Program (a customizable graduate school degree program that allows access to multiple graduate schools, departments and education programs).
- ◆ Kick Off of Collaboration with Middle East and North Africa  
Expanded functions of the Kyushu University Cairo Office in Egypt, one of key countries, in conjunction with commencement of the Study in Japan Global Network Project. Started up accepting international students from the Middle East and North Africa.
- ◆ THE World University Ranking - 4th in Japan  
Obtained Rank 4, up from Rank 5 in the previous year, in the education capacity-focused rankings. Our “internationality” and “education resources” were highly evaluated.
- ◆ Tobitate! - Leap for Tomorrow - 2nd Highest Number of Successful Candidates in Japan in 10th year of the Program  
Provided Japanese students hoping to study overseas with detailed support via one-stop service by coordinators, etc. at Global Student Exchange Promotion Center.  
The number of successful candidates in the 10th year of the program achieved as many as 20 students, the 2nd highest in Japan.

### Initiatives Related to Research Internationalization

- ◆ Establishment of Institute for Asian and Oceanian Studies  
Established the Institute for Asian and Oceanian Studies, which tackles social issues in Asia and Oceania, as an embodiment of Kyushu University’s strengths and features. Commenced activities in April 2019.

### Initiatives Related to Governance Reform

- ◆ Commencement of Kyushu University Renaissance Project  
Commenced comprehensive human resource cultivation strategies from the level of undergraduate school and graduate school education to researcher cultivation. Continuous cultivation of global human resources capable of leading the world.

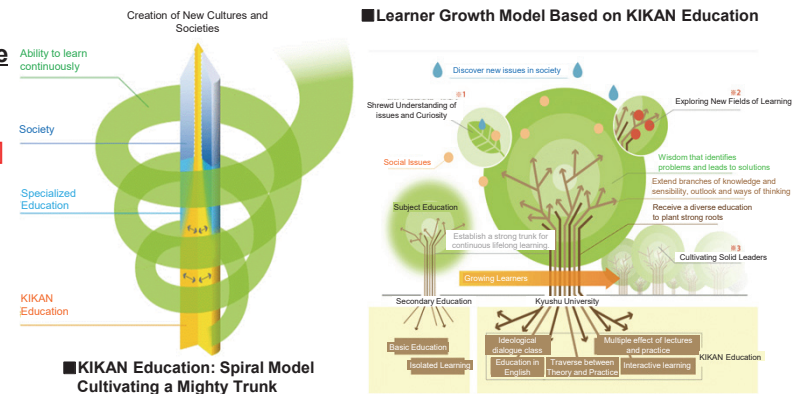
### Initiatives Related to Reputation Management (RM)

- ◆ Hosting International Conferences  
Held Congress of the International Academy of Comparative Law for the first time in East Asia. Around 840 attendees from more than 60 countries and regions.  
Also held the World Social Science Forum for the first time in Asia.  
Around 1,000 attendees from around 80 countries and regions.

## Review of curriculum and measures to respond to more internationalization that are grounded in undergraduate education and based on “KIKAN Education.”

### Promoted revision of the curriculum throughout the entire undergraduate school education process based on “KIKAN Education” and responses to internationalization in order to improve and develop initiatives in active learner cultivation.

- ◆ Increase in the percentage of courses taught in a foreign language.  
Undergraduate Schools: [2017] 12.2% → [2018] 16.6%; Graduate Schools: [2017] 40.4% → [2018] 43.8%
- ◆ Added the status of courses taught in a foreign language as an indicator of department incentive expenses (University Reform Promotion Expenses).
- ◆ Decided to revise the 3 Policies in all departments in 2019.
- ◆ Promoted introduction of rubric evaluations: [2017] 74.2% → [2018] 74.4%
- ◆ Improvement of percentage of graduates with GPA of less than 2.0: [2014] 21.8% → [2018] 11.8%
- ◆ Introduction ratio of Quarter Courses: [2017] 13.1% → [2018] 26.1%



## Collaboration Enhancement Based on Performance of Joint Usage and Collaborative Research Centers

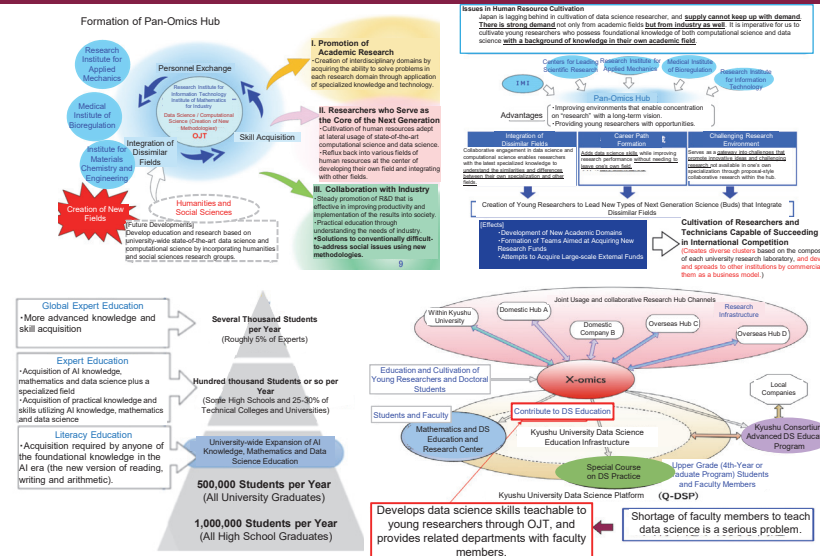
### Promotion of new Interdisciplinary Research through Collaboration with Joint Usage and Collaborative Research Centers

In collaboration with clusters in joint usage and collaborative research centers across Japan, which serve as domestic and international hubs, we promoted cultivation of human resources to serve as the core of next-generation interdisciplinary domain creation by searching for ways to create science, which is always newly emerging, from integration of the fields of measurements, calculations and data, with Pan-Omics Data-Driven Innovation Research, one of Kyushu University's strengths, as the standard. **This is the first initiative in Japan in which new interdisciplinary domains are created through collaboration with Joint Usage and Collaborative Research Centers within the university.**

◆ Decided to establish the Pan-Omics Data Driven Innovation Research Center utilizing the System for Invigorating University Reform in order to cultivate the young researchers who need data computational science in all academic fields at Kyushu University. (Established on April 1, 2019)



◆ Formed the "Kyushu University Data Science Platform (Q-DSP)," a collaboration relating to data science education and research within the university, in cooperation with stakeholders in the university involved in data science, such as the "Education and Research Center for Mathematical and Data Science" (established as a MEXT hub university for the "improvement of mathematical and data science-related education"), primarily involving the Faculty of Information Science and Electrical Engineering and the Faculty of Mathematics.



## Functional Enhancement of the International Institute for Carbon-Neutral Energy Research (I<sup>2</sup>CNER) within the University's Strategic System Reforms

### Promotion of State-of-the-Art Research in the Field of Carbon-Neutral Energy Research in Collaboration with the University of Illinois at Urbana-Champaign

- ◆ Strengthened collaboration with Kyushu University Platform of Inter-/ Transdisciplinary Energy Research, which propels comprehensive energy-related matters as the university's energy research and education platform. (Specially focuses on the research on carbon-neutral energy)
- ◆ Accomplished collaborative and cooperative research with the Institute of Mathematics for Industry. (Fostering young and talented researchers)
- ◆ Promoted international joint research projects with more than 20 overseas affiliated institutions and companies. [Number of publications: 296; h-index: 73; Number of awards: 33 (as of March 22, 2019)]
- ◆ Achieved the creation of innovative and, highly efficient energy science and technologies aiming to realize a low-carbon

### Examples of Groundbreaking Research Results to Date:

- Highly-efficient hydrogen production using new photo-bio-catalysts
  - Application of new solid electrode to fuel cell batteries
  - Development of metal materials that do not deteriorate due to hydrogen
  - Creation of super thin membranes that adaptively separate CO<sub>2</sub>
  - Development of continuous monitoring apparatus that manage underground stores of CO<sub>2</sub>
- Implementation of these into society is expected to contribute to a reduction in CO<sub>2</sub> equivalent to 5,180,000 tons by the year 2050 in comparison with 2010.

Initiatives Aimed at Establishing New Undergraduate Schools to Cultivate Human Resources Capable of Working Actively in International Society

Previous Slide No. 8

Establishment of the Institute for Research and Education (provisional name) to Systematize Research and Education Activities that Leverage Kyushu University's Strengths

Previous Slide No. 9

Initiatives Aimed at Strengthening and Reorganizing Strategic, High-Priority Education and Research Organizations

Previous Slide No. 10

Provision of Safe, Secure Advanced Telecommunications Infrastructure and Improvement of Cyber-literacy among Members

Previous Slide No. 12