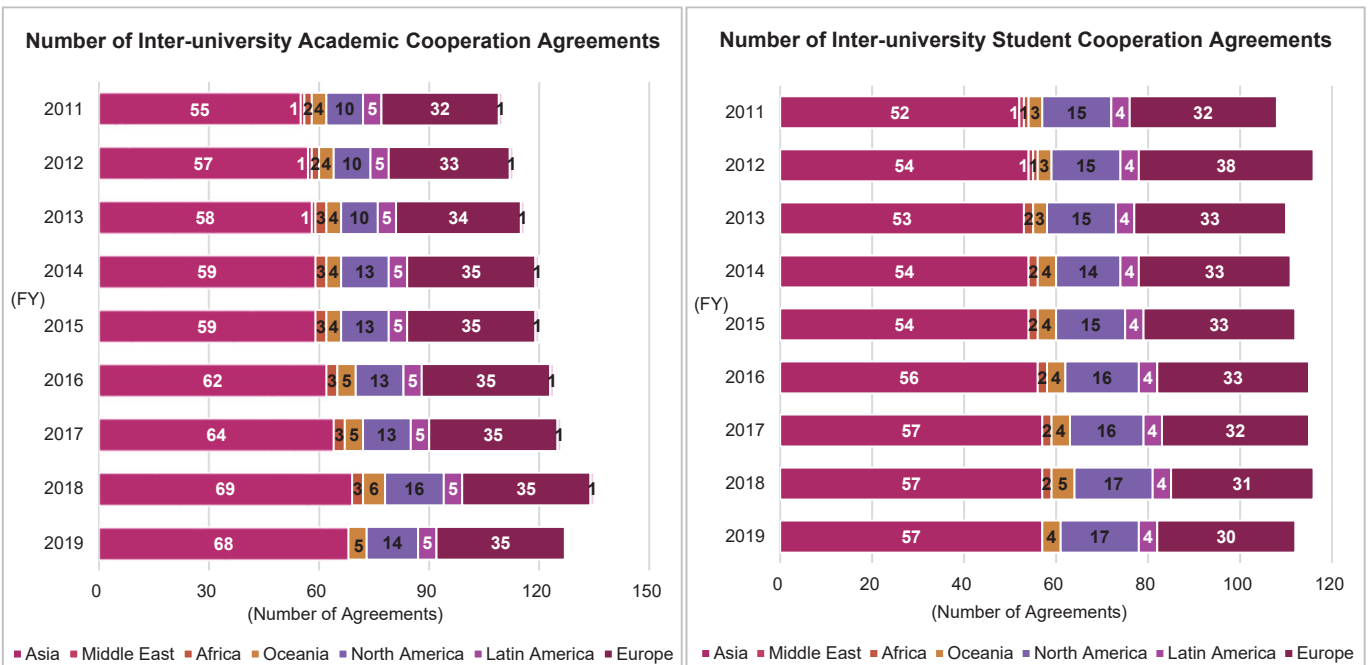


10. International (as of May 1 each fiscal year)

10-1. Exchanges with Universities Overseas

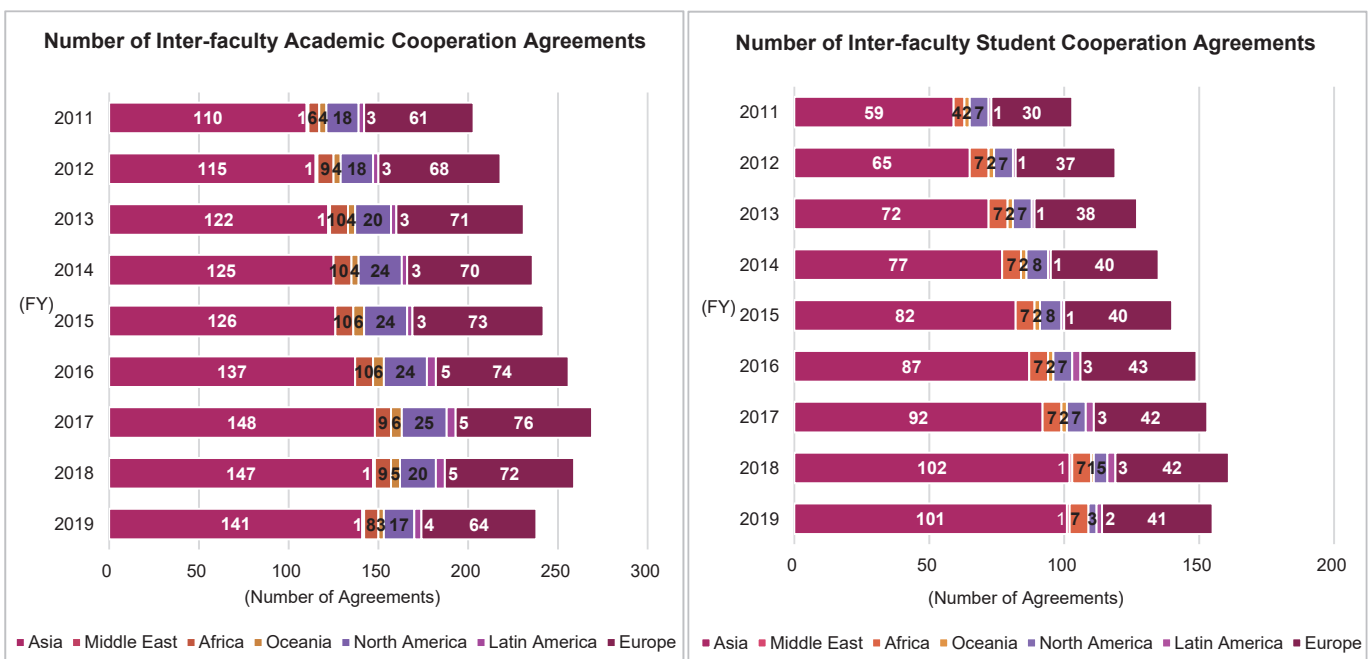
10-1-1. Exchanges with Universities Overseas: Inter-university Exchange Agreements

The number of inter-university academic cooperation and student exchange agreements remains stable. When viewed by region, there is a high percentage of agreements in Asia and Europe.



10-1-2. Exchanges with Universities Overseas: Inter-faculty Exchange Agreements

In recent years, the number of inter-faculty academic cooperation agreements has been in decline. The number of inter-faculty student exchange agreements has exceeded 150.



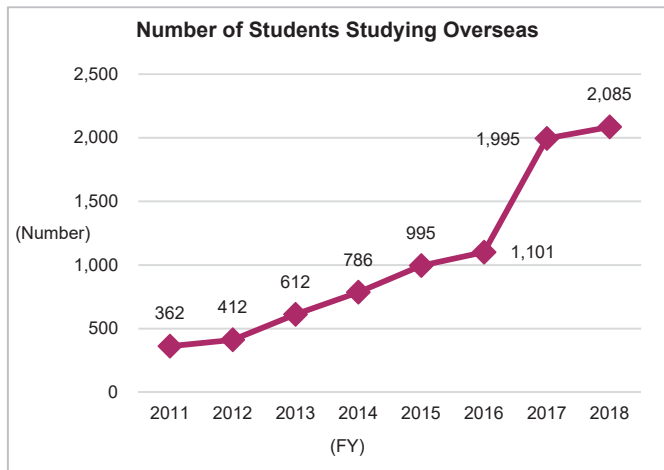
*Source: Kyushu University Information (as of May 1 each year)

10-2. Study Overseas by Kyushu University Students

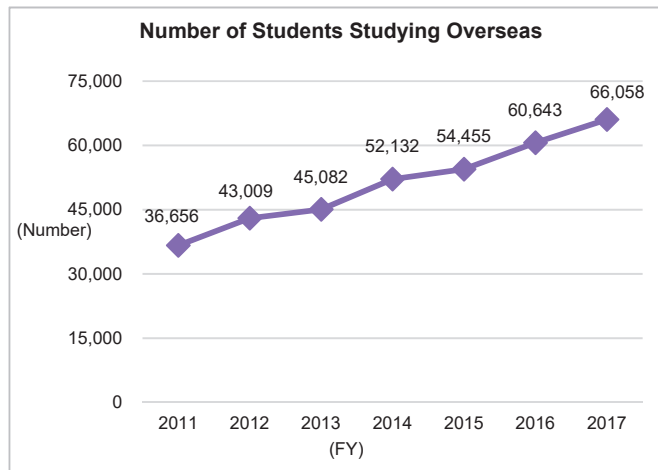
10-2-1. Exchanges with Universities Overseas: Inter-faculty Exchange Agreements

The number of Japanese students undertaking study overseas is trending upwards, both at Kyushu University and across Japan as a whole.

◆ Kyushu University ◆

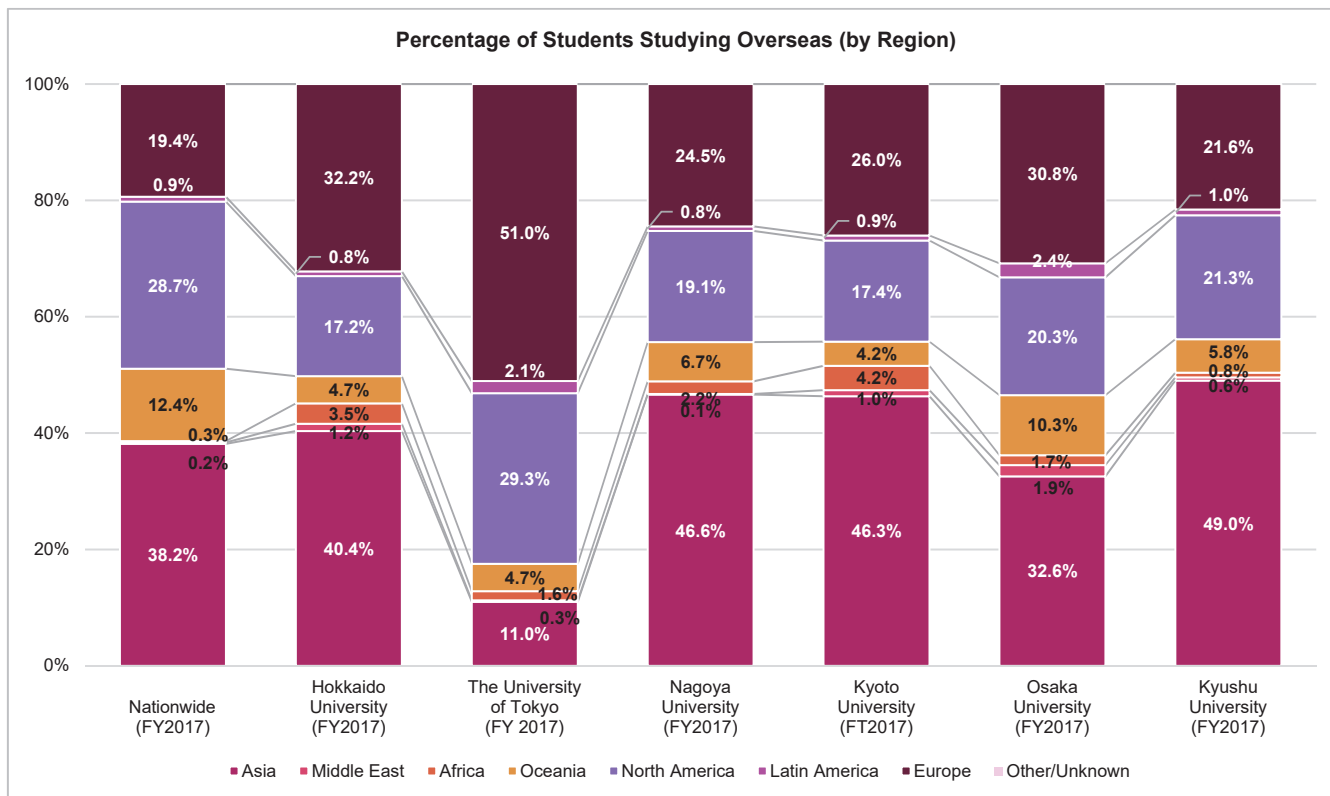


◆ Nationwide ◆



*Source:
 •Kyushu University: *Kyushu University Information*
 •Nationwide: JASSO, *Results of the Survey of Japanese Students Studying Abroad Based on Student Exchange Agreements*

◆ Comparisons with Other Universities: Percentage of Students Studying Overseas (by Region) ◆

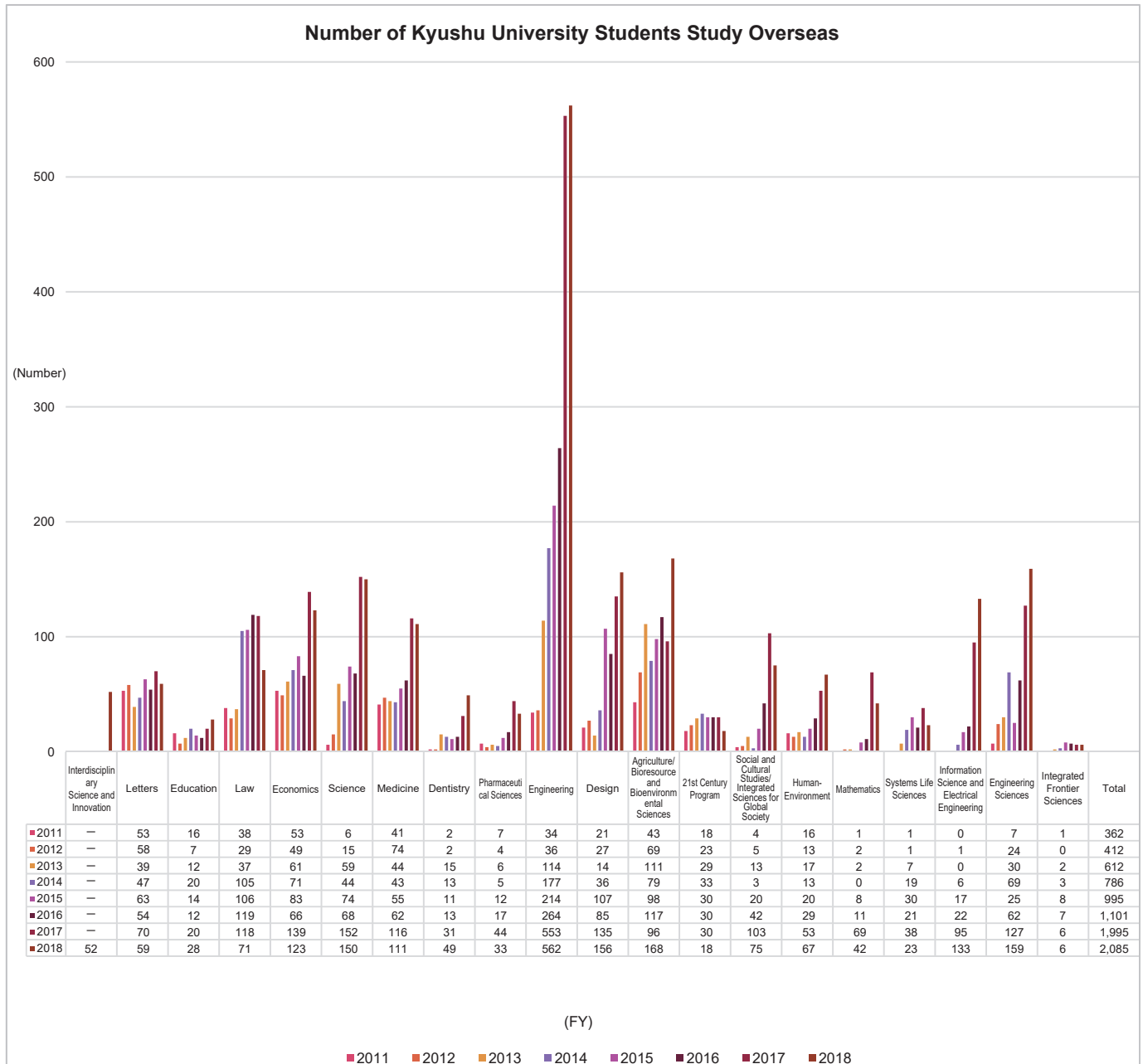


*Source: Nationwide: JASSO, *Survey of Japanese Students Studying Abroad Based on Student Exchange Agreements*
 Hokkaido University: *Overseas Dispatch Status of Japanese Students (by Region)*, *Hokkaido University Factbook* (as of May 1, 2017)
 The University of Tokyo: *Number of Students Studying Overseas*, *University Information* (as of May 1, 2017)
 Nagoya University: *Types and Purposes of Overseas Study include Student Exchanges, Research, Language Study, and Earning of Degrees*, *University Profile Reference* (FY2017)
 Kyoto University: *Number of Students Who Traveled to Other Countries*, *University Information* (FY2017)
 Osaka University: *University Information* (FY2017) *No definitions, etc. provided
 Kyushu University: *University Information* (as of May 1, 2017) *Includes those who began their period of study abroad in a previous fiscal year.
 Tohoku University: Nothing provided as data on 2017 was not available

• Please note that the definitions, etc. above differ from one university to another, so direct comparison is not possible.

10-2-2. Study Overseas by Kyushu University Students (by School/Institute/Faculty)

The number of Kyushu University students studying overseas is trending upwards. In terms of destinations for those studying abroad, Asia is the most popular, which has also been influenced by the establishing of overseas offices, followed by Europe and North America, both of which have been on the rise in recent years. Viewed by undergraduate school, the largest category is those from the School of Engineering, and in FY2017 in particular this grew significantly.

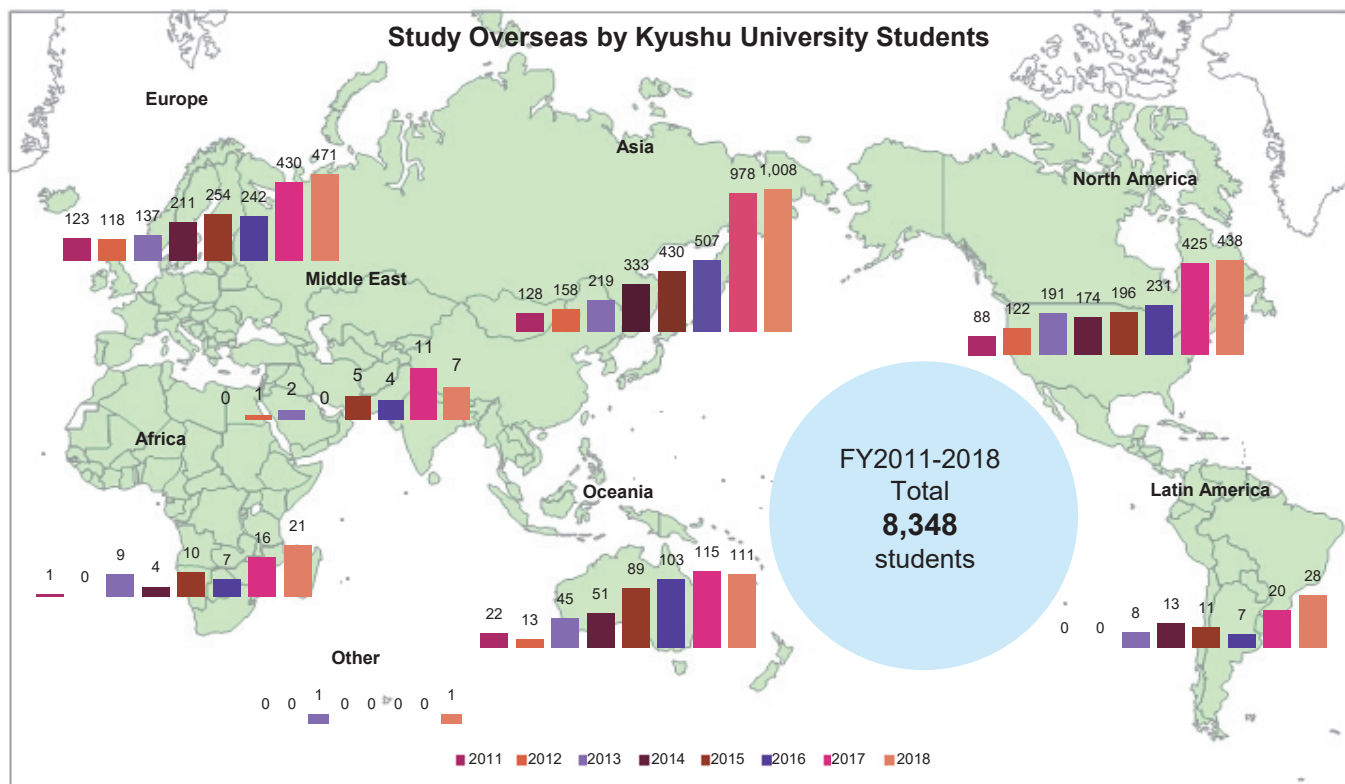


- Includes those who began their period of study abroad in a previous fiscal year.
- Overseas offices are as follows:
 Asia: Seoul office, Beijing office, Hanoi office and Taipei office
 Europe: London office and Munich office
 North America: California office and Washington D.C. office
 Africa: Cairo office

*Source: *Kyushu University Information*

10-2-3. Study Overseas by Kyushu University Students (by Region)

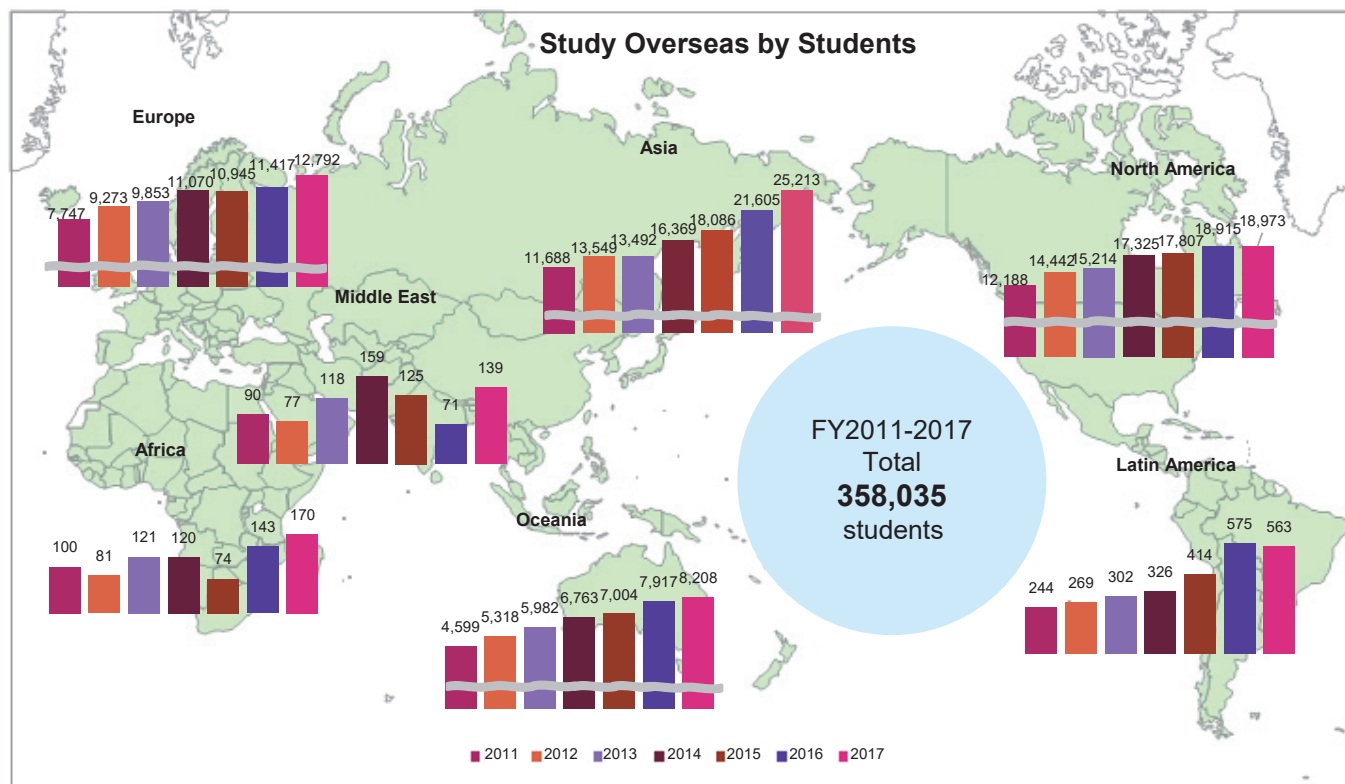
◆Kyushu University◆



• Includes those who began their period of study abroad in a previous fiscal year.

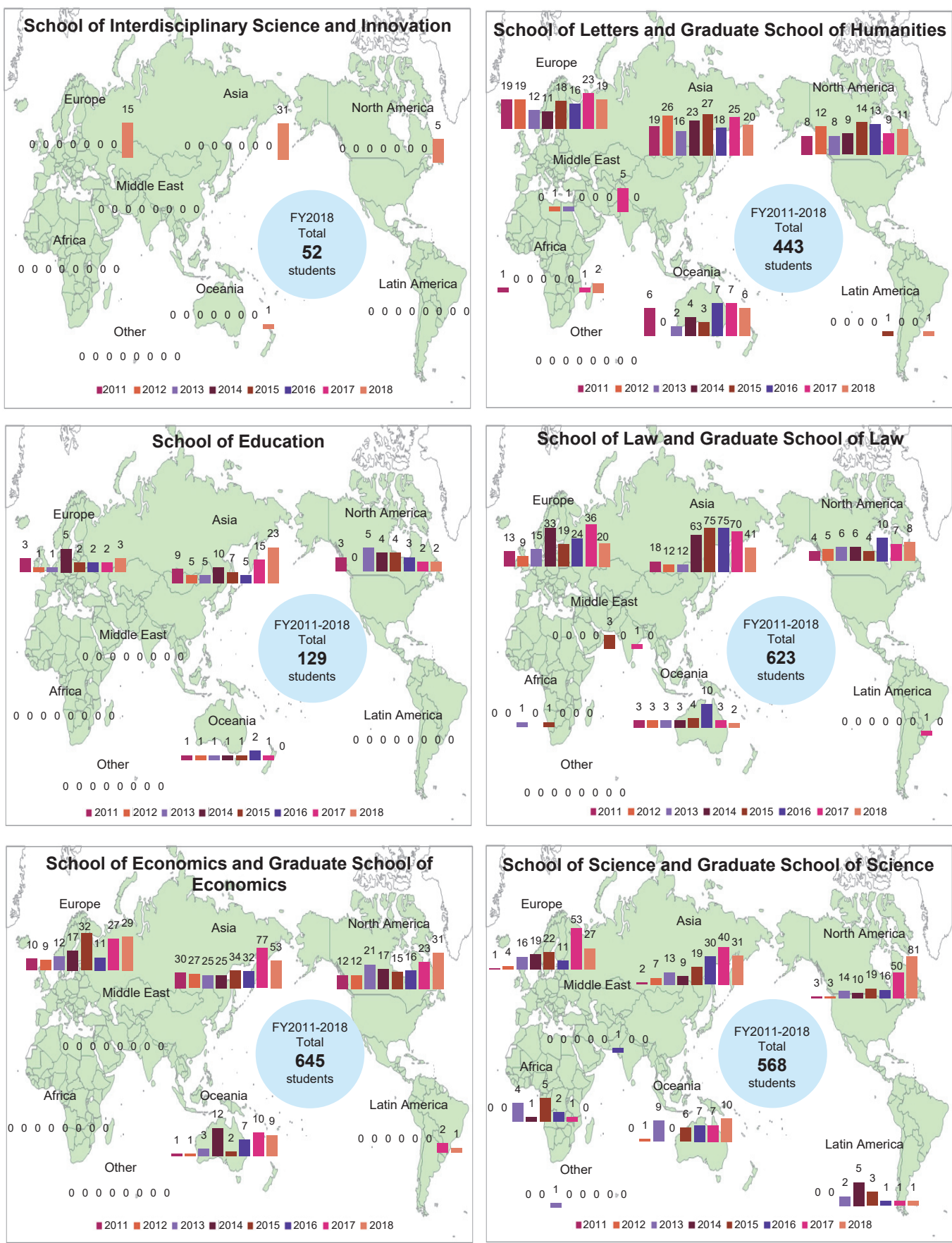
*Source: Kyushu University Information

◆Nationwide◆



*Source: JASSO, Results of the Survey of Japanese Students Studying Abroad Based on Student Exchange Agreements

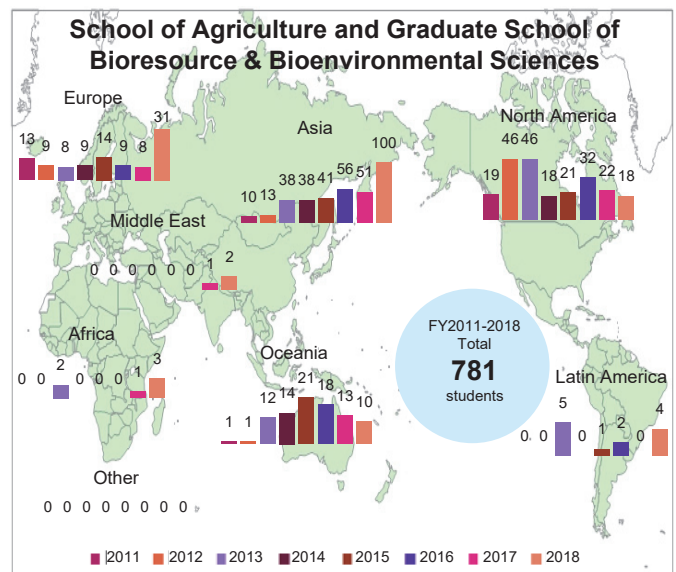
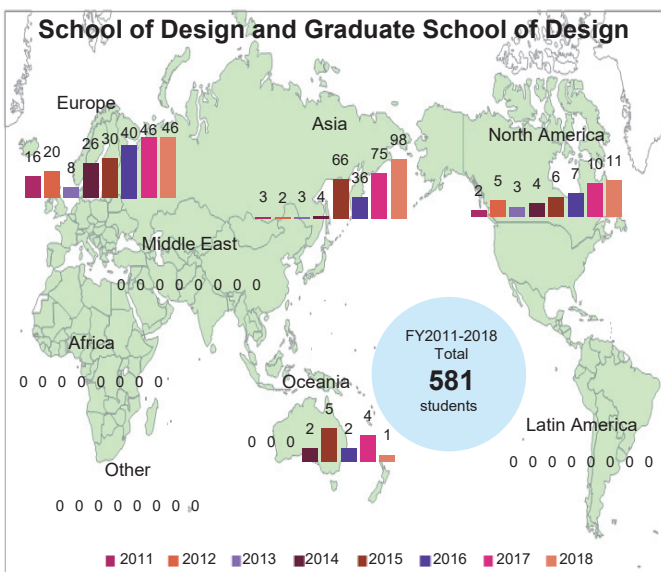
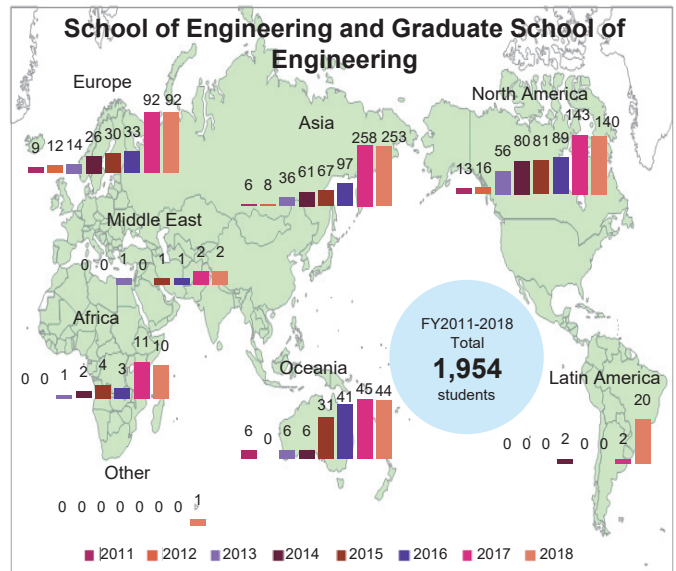
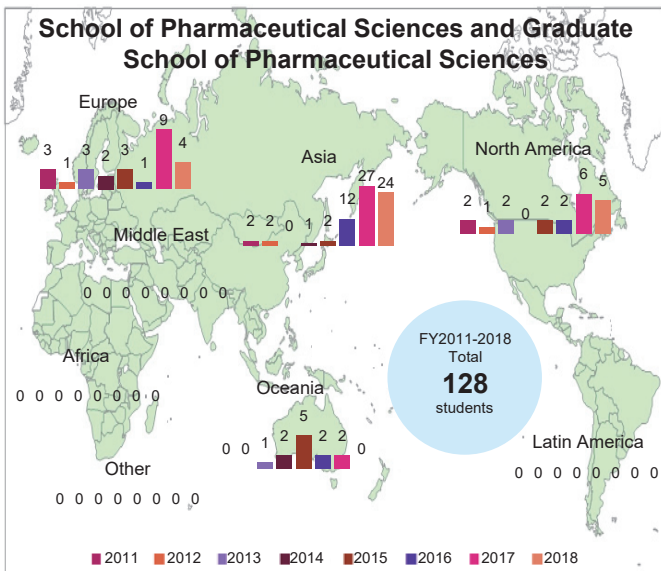
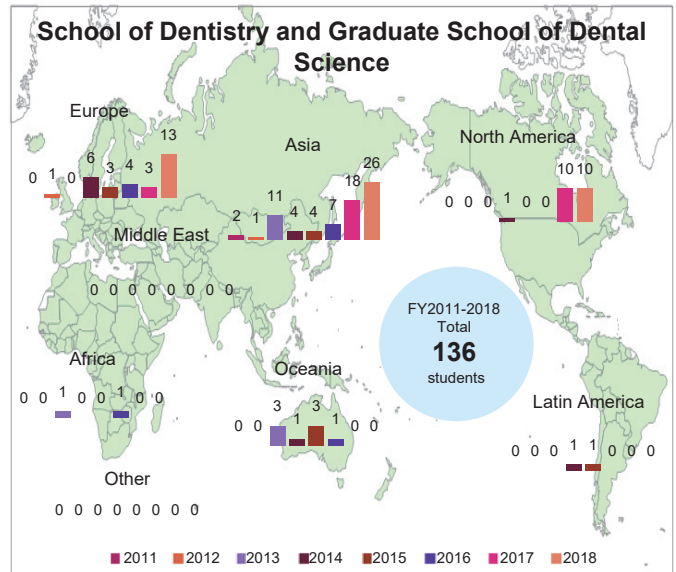
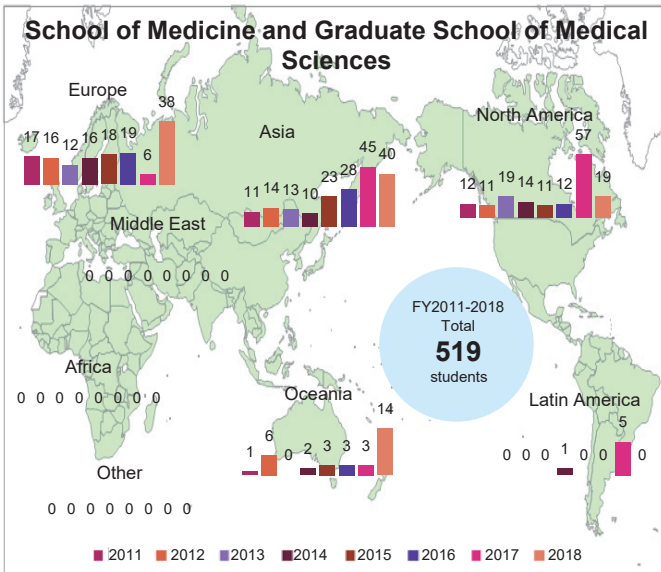
10-2-4. Study Overseas by Kyushu University Students (by School/Institute/Faculty and Region)



* Includes those who began their period of study abroad in a previous fiscal year.

*Source: Kyushu University Information

10-2-4. Study Overseas by Kyushu University Students (by School/Institute/Faculty and Region) (Continued)



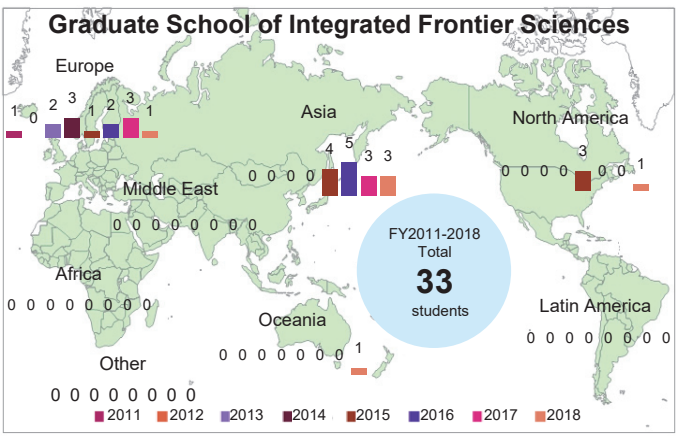
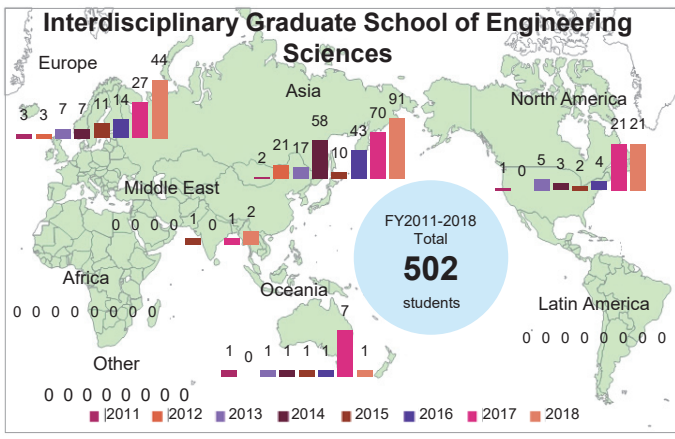
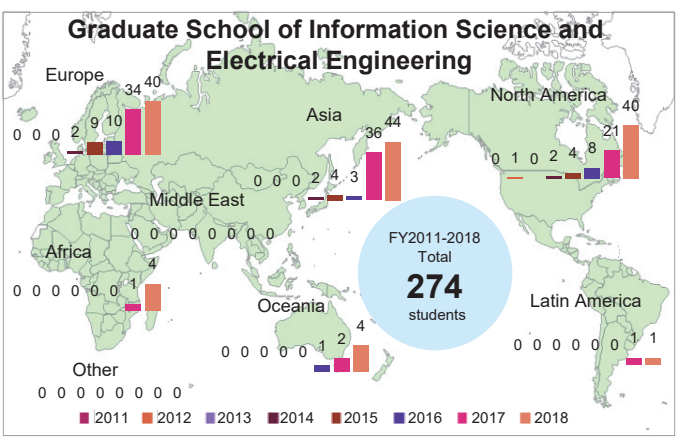
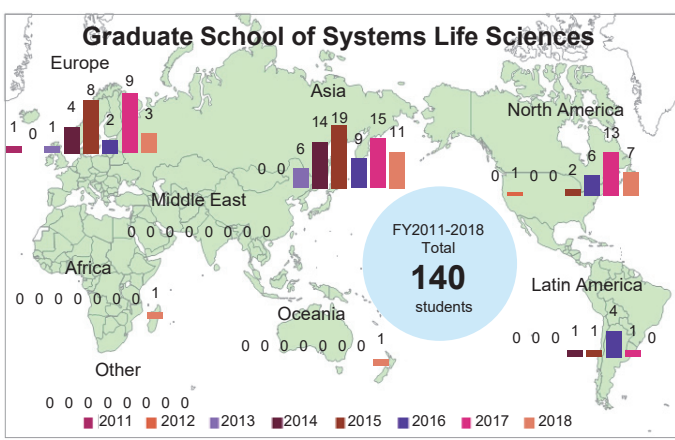
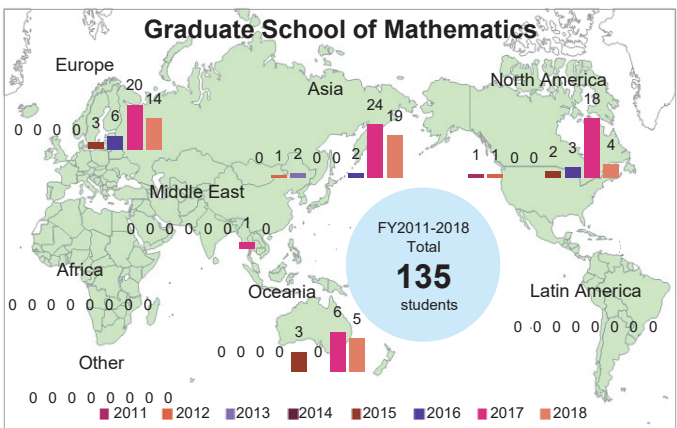
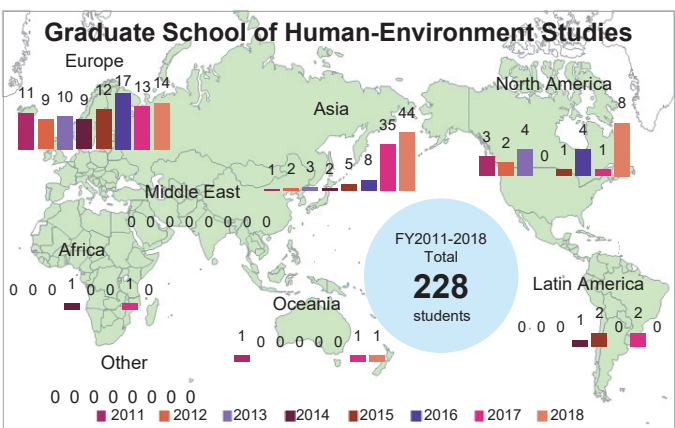
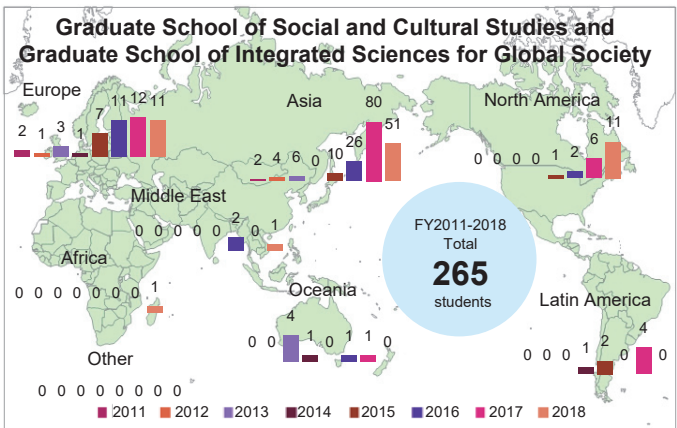
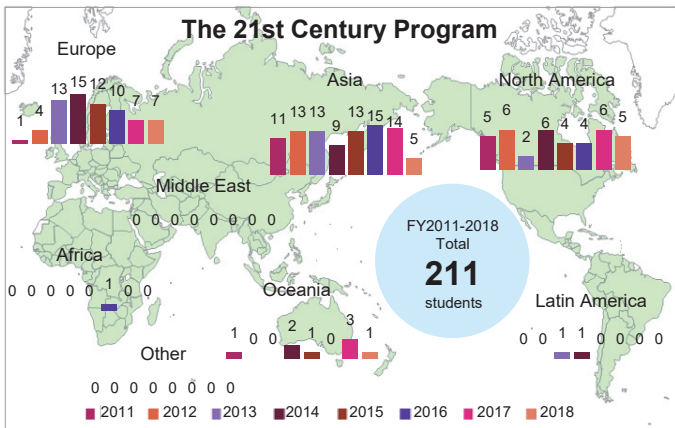
• Includes those who began their period of study abroad in a previous fiscal year.

*Source: Kyushu University Information

Overseas and Composites with Other Universities
 Number of Faculty and Staff Members
 Number of Students
 Admissions
 Enrollment
 Graduate Degrees Conferred
 Career Paths and Employment Status
 Success in Qualification Examinations
 Research
 Industry-University Government Collaboration
 University Hospital
 Income and Expenditure
 Selection of Research/Education Programs

International

10-2-4. Study Overseas by Kyushu University Students (by School/Institute/Faculty and Region) (Continued)



* Includes those who began their period of study abroad in a previous fiscal year.

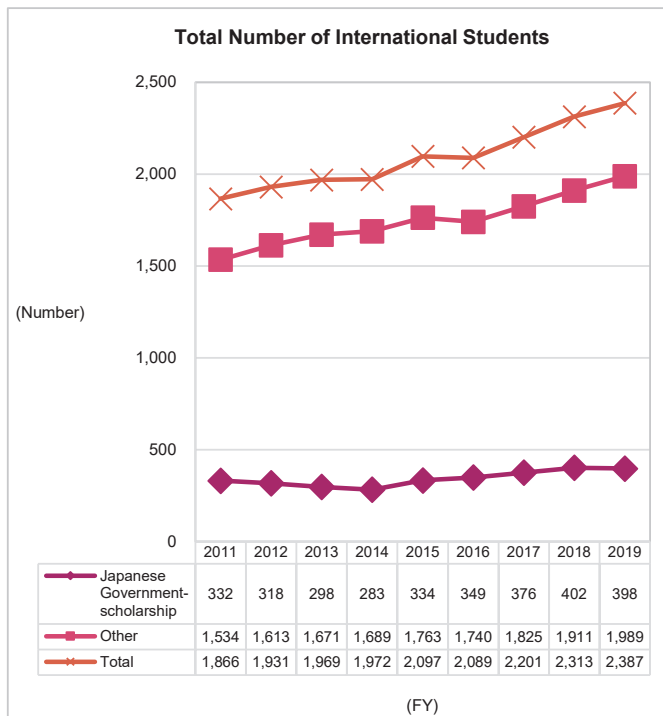
*Source: Kyushu University Information

10-3. International Student Admissions

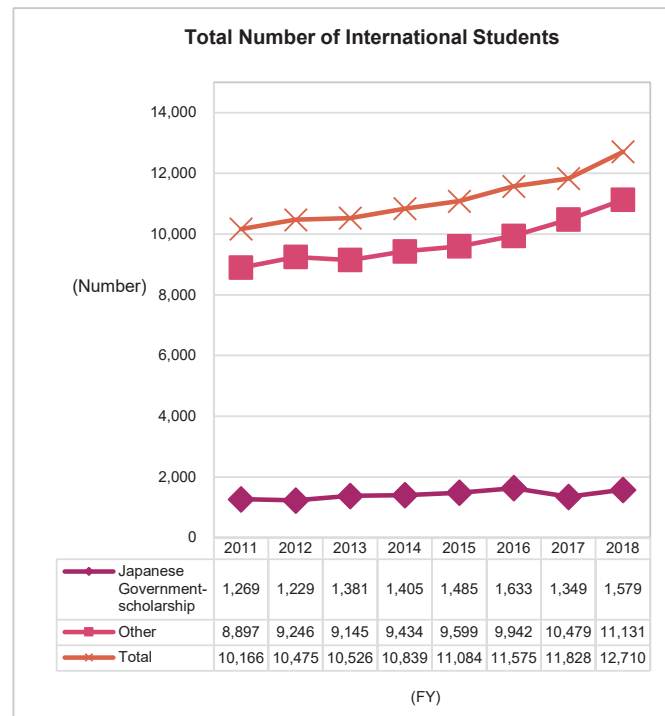
10-3-1. International Student Admissions (Overall)

The number of international students is rising year on year. Most notably, Kyushu University recorded its highest-ever number of international students in FY2019, with 2,387 international students enrolled. The number of international students as a percentage of the number of students enrolled is significantly higher for the university than the percentage for the country as a whole, and in recent years has been on an upward trend.

◆ Kyushu University ◆



◆ Nationwide: National Universities ◆

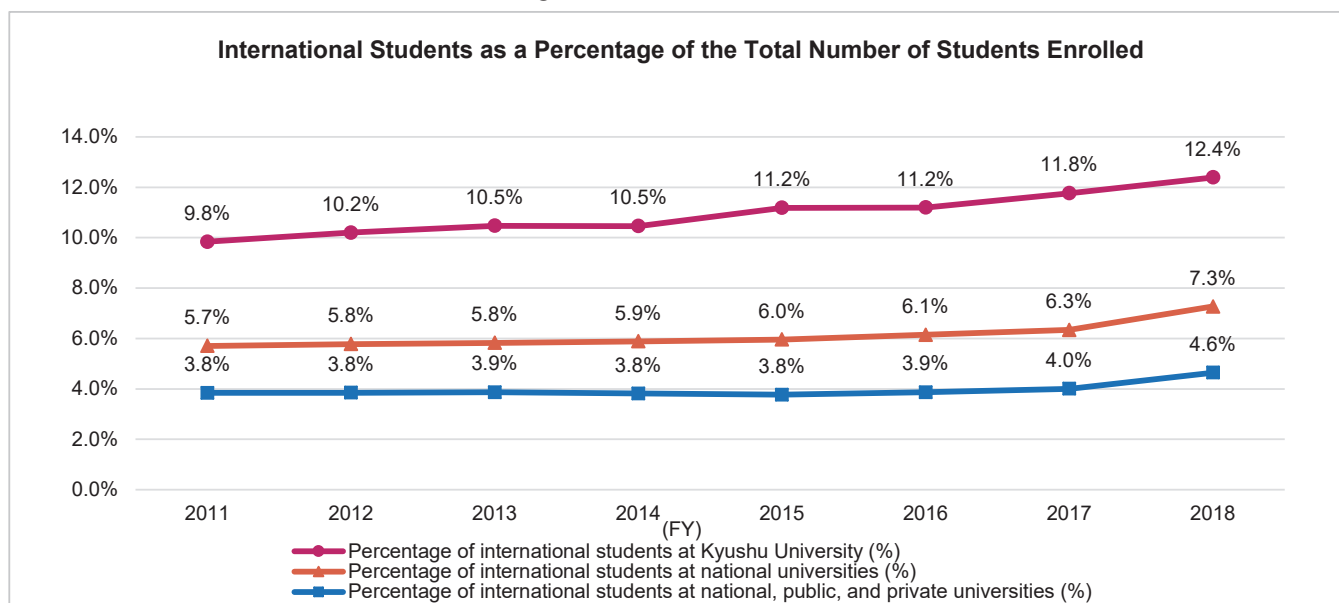


- Japanese Government-scholarship: Individuals with foreign nationality who reside in Japan and whose status of residence is "student", who are engaged in study or research at a university or college and are in receipt of a Japanese government scholarship
- Other: International students other than the aforementioned who are studying at their own expense (including JICA-related international students) or international students dispatched at the expense of another country's government
(Figures include students participating in the Chinese government's "China Scholarship Council Students") (see Article 2 of the *Implementation Guidelines for International Scholarship Scheme*)

*Source:

- Kyushu University: *Kyushu University Information* (as of May 1 each year)
- Nationwide: MEXT, *Basic School Survey on Universities and Graduate Schools: Number of International Students by Department* (for each fiscal year)

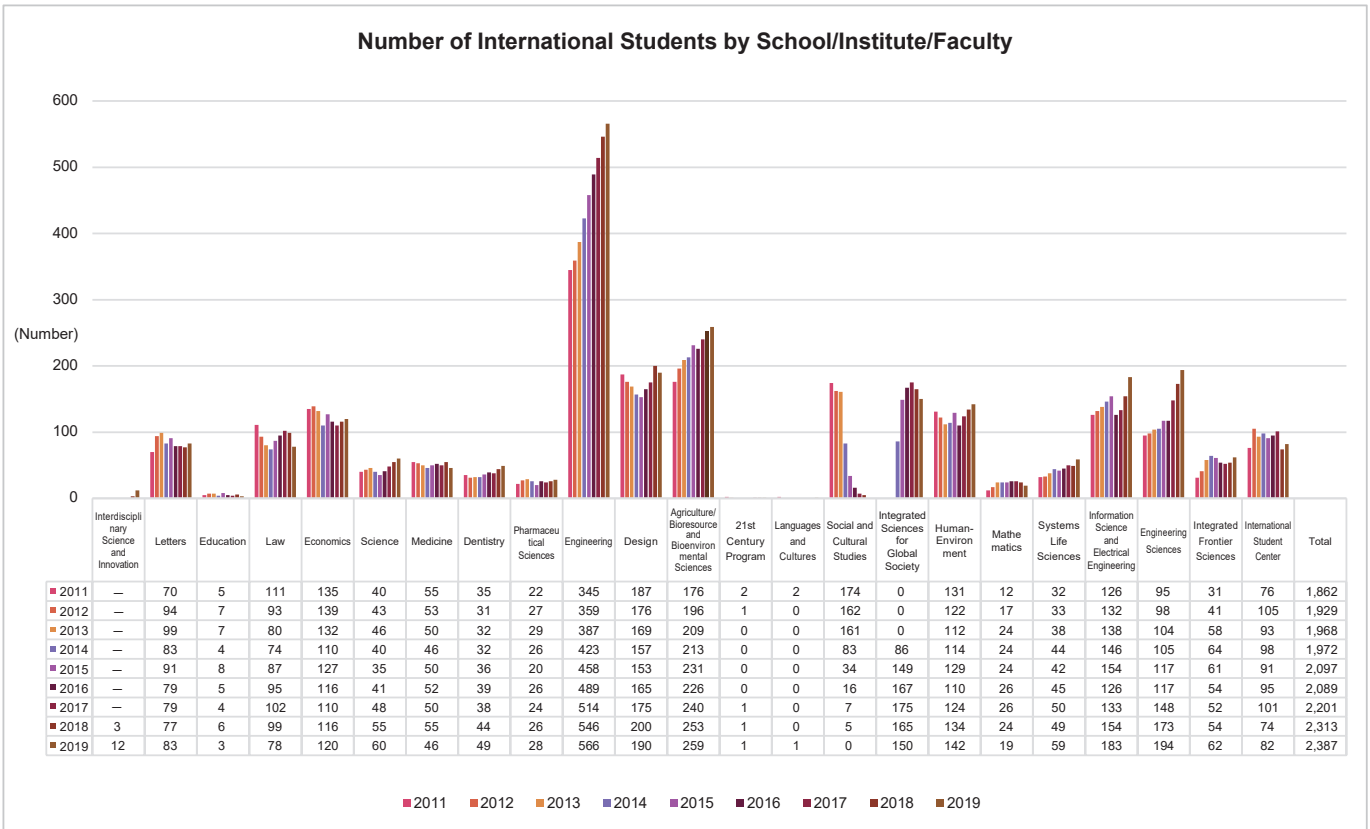
◆ International Students as a Percentage of the Total Number of Students Enrolled ◆



*Source:

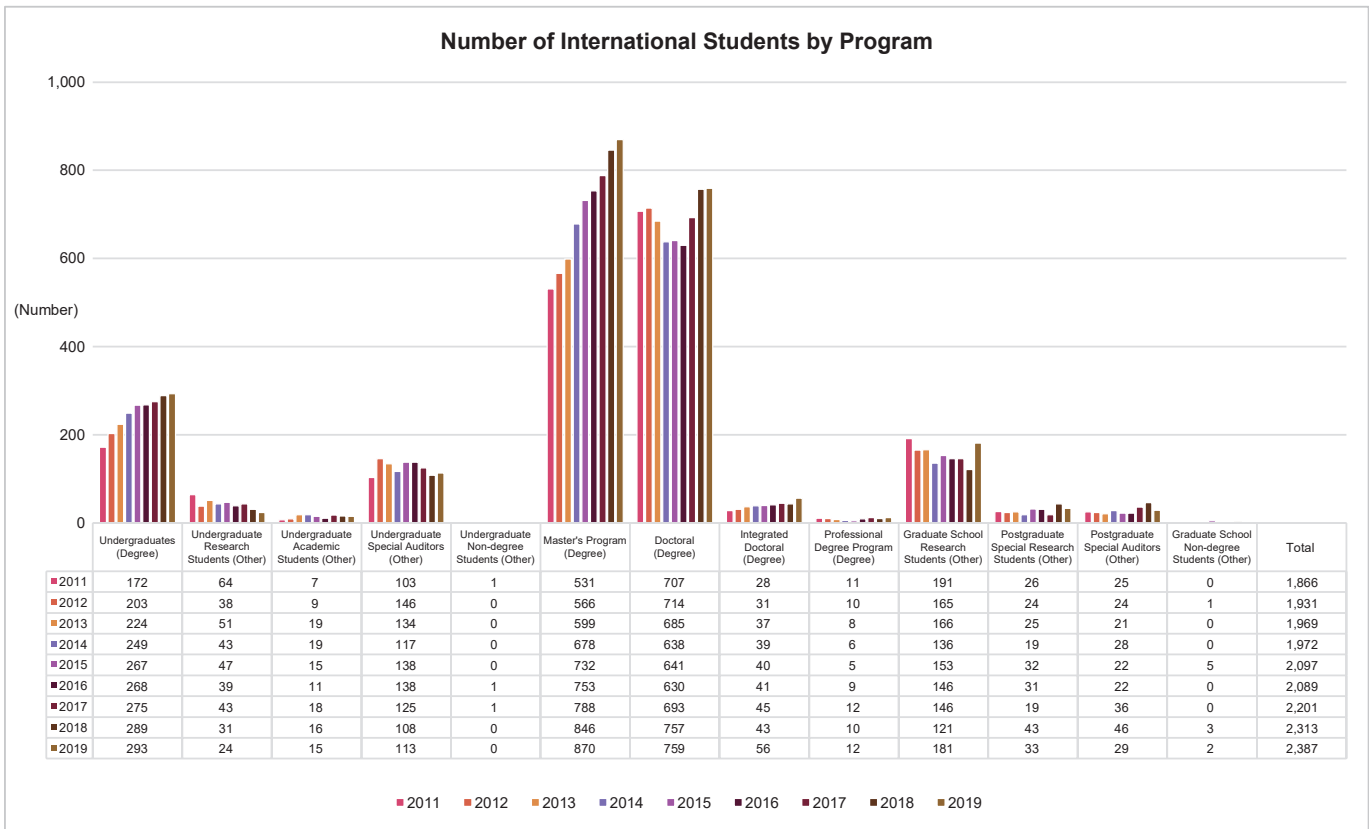
- Kyushu University: *Kyushu University Information* (as of May 1 each year)
- Nationwide: JASSO, *Survey of International Students in Japan*, and MEXT, *Basic School Survey* (for each fiscal year)

10-3-2. International Student Admissions (by School/Institute/Faculty)



*Source: *Kyushu University Information* (as of May 1 each year)

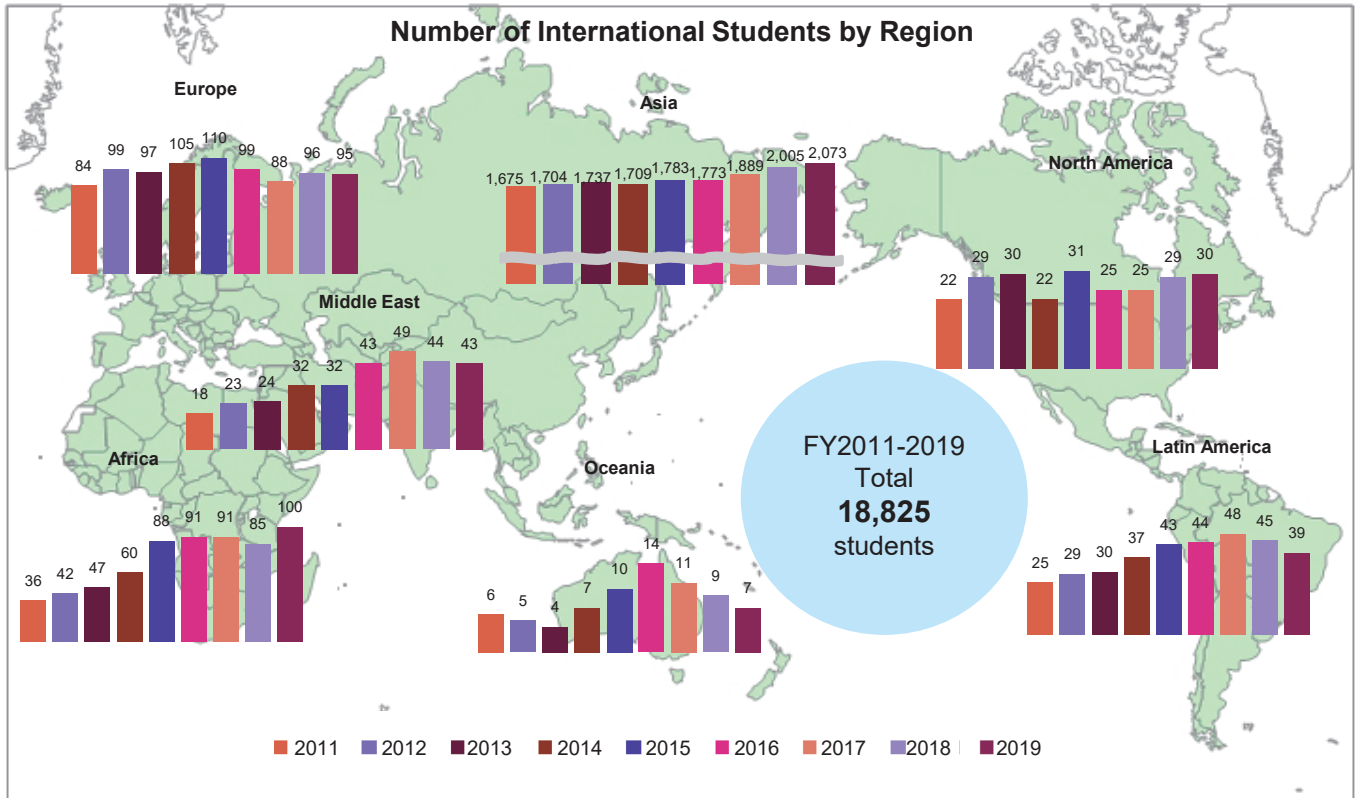
10-3-3. International Student Admissions (by Program)



*Source: International Affairs Department on Number of International Students by Program (2011-2018)
Kyushu University Information (2019 only) (as of May 1 each year)

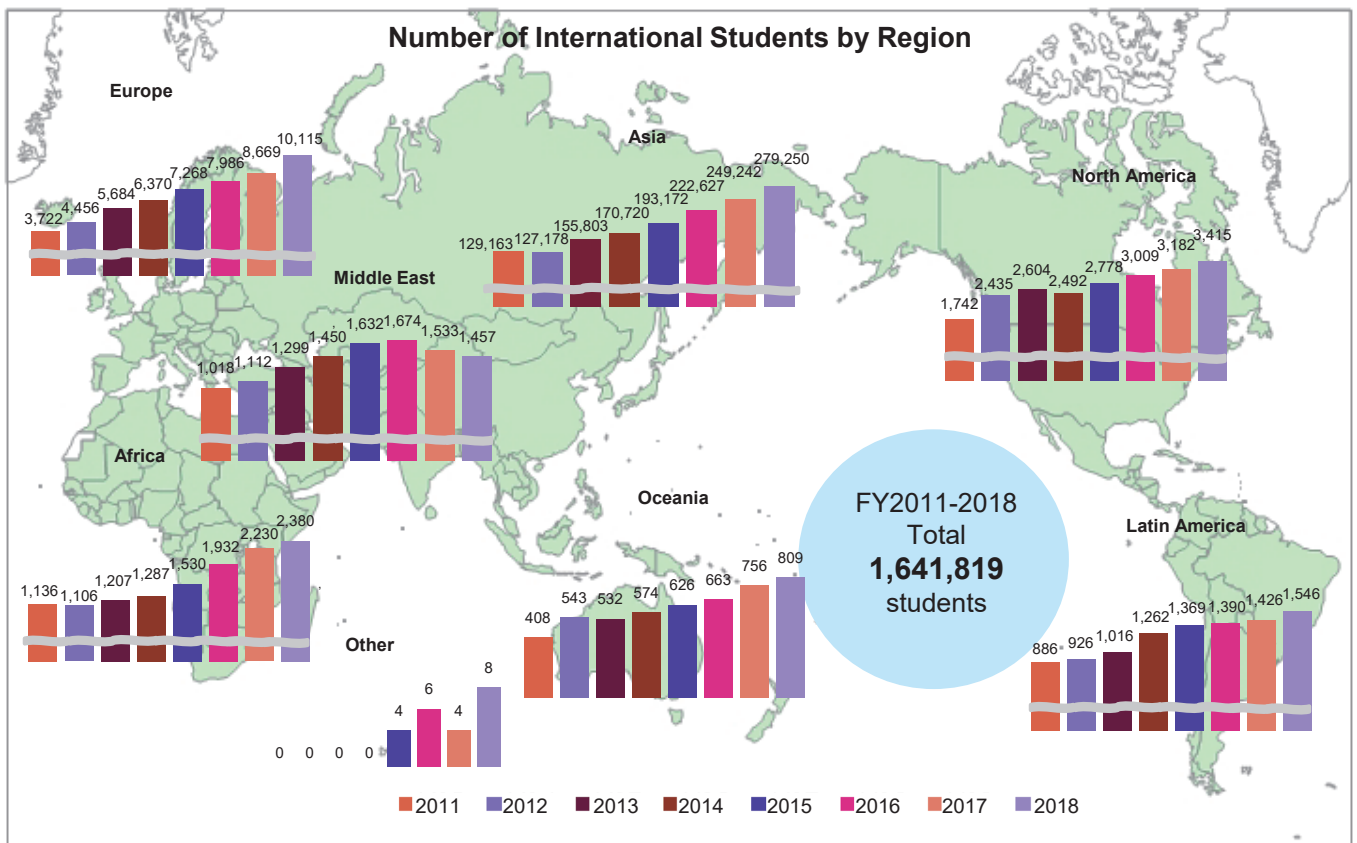
10-3-4. International Student Admissions (by Region)

◆ Kyushu University ◆



*Source: Kyushu University Information (for each fiscal year)

◆ Nationwide ◆



• From FY2015, totals include "Other (stateless persons)"

*Source: JASSO, Annual Survey of International Students in Japan (for each fiscal year)