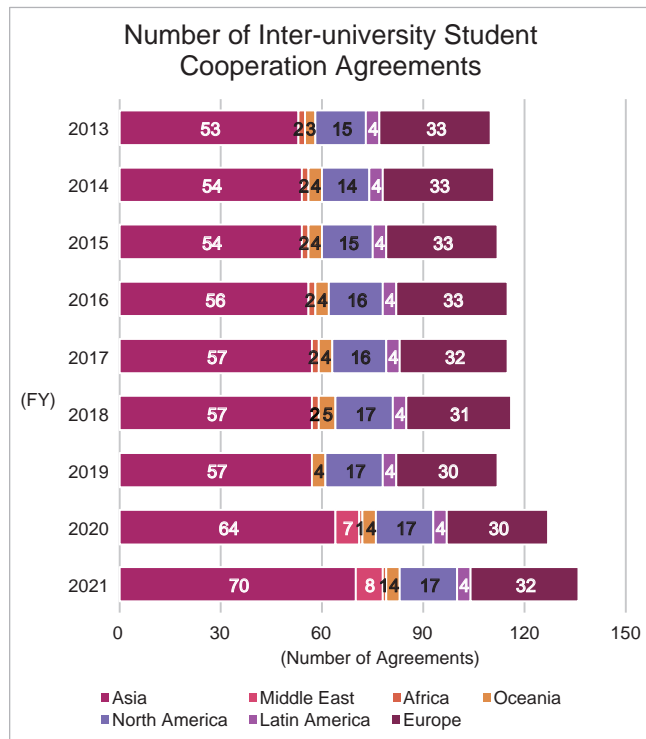
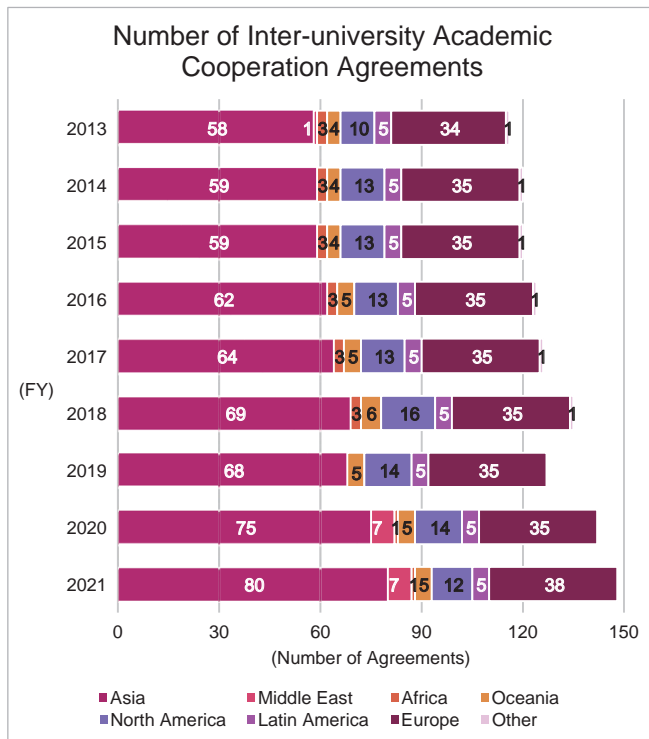


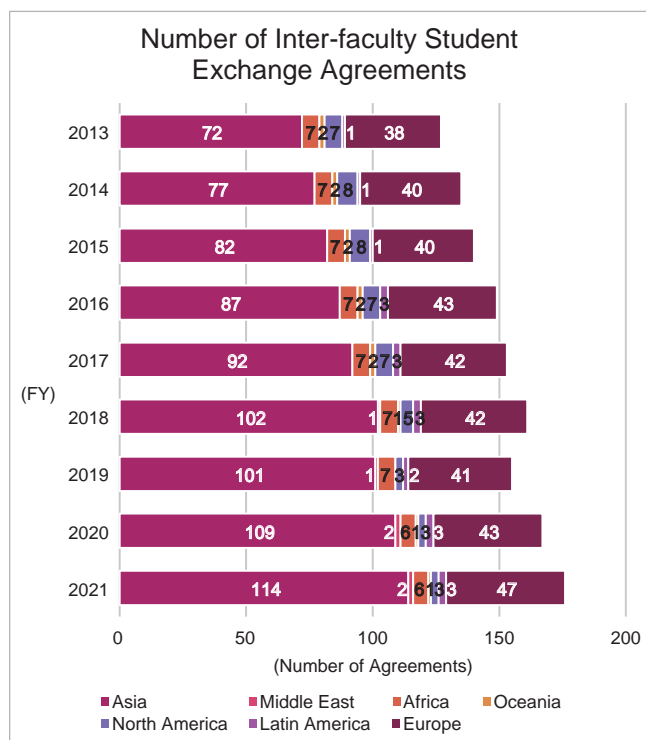
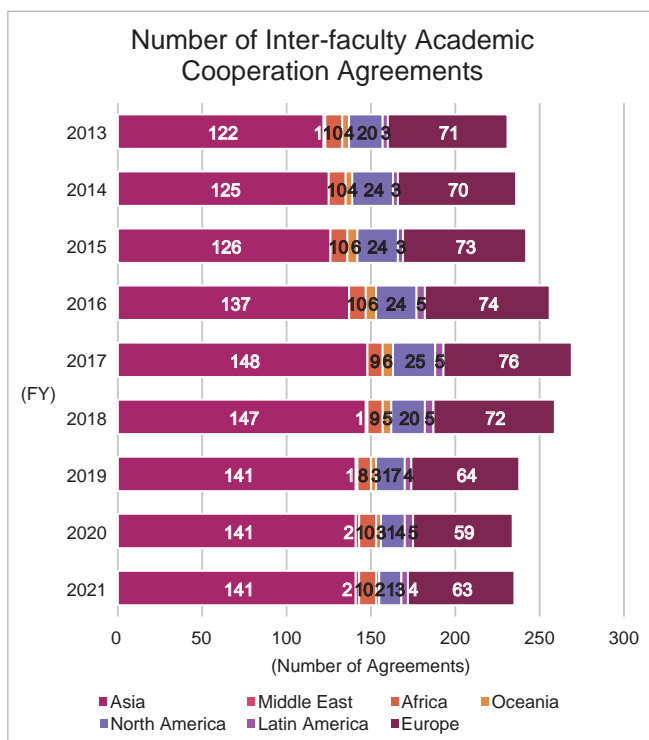
10. International (as of May 1 each fiscal year)

10-1. Exchanges with Universities Overseas

10-1-1. Exchanges with Universities Overseas (Inter-university Exchange Agreements)



10-1-2. Exchanges with Universities Overseas (Inter-faculty Exchange Agreements)

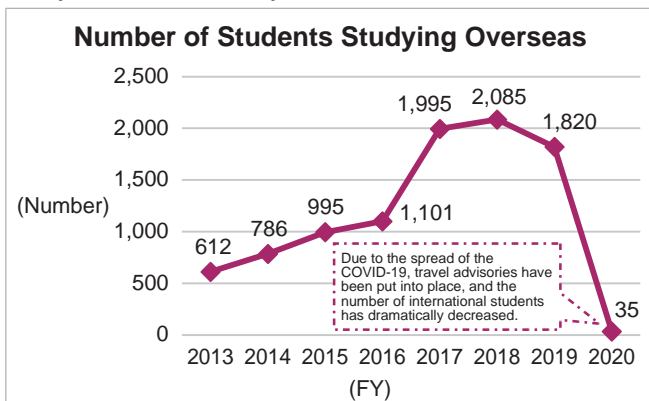


*Source: Kyushu University Information

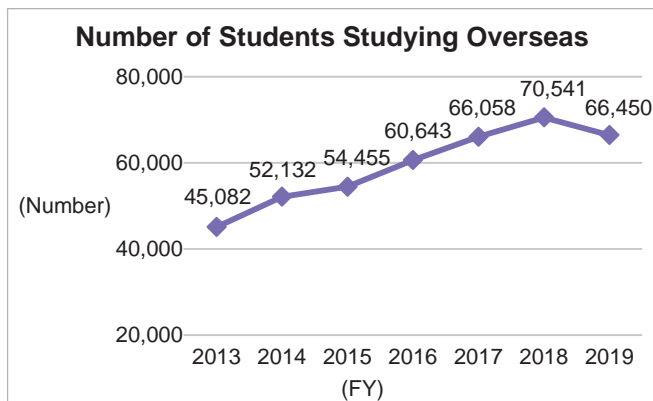
10-2. Study Overseas by Students

10-2-1. Study Overseas by Students (Overall)

◆Kyushu University◆



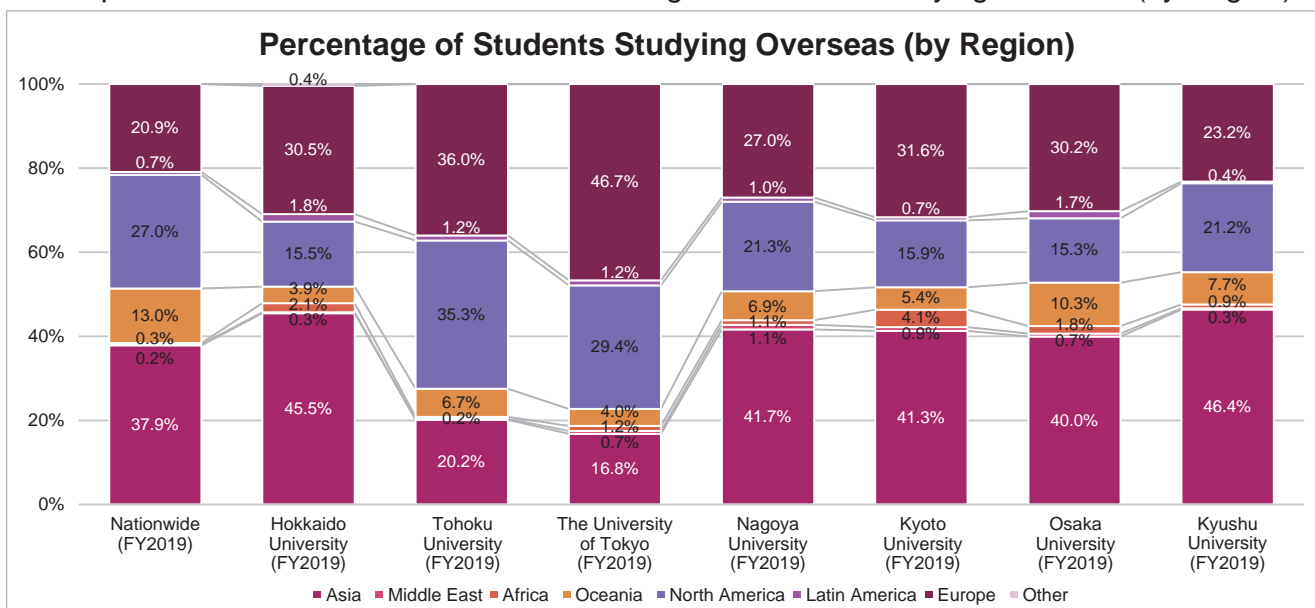
◆Nationwide◆



- Data includes those who began their overseas study periods in the previous Fiscal Year (FY 2013-2018).
- The total figures include the number of international students (FY 2019-2020).
- From 2017, the target of the JASSO Survey was changed. Until now, “University Presentation and Symposium Attendance Excluding Research Exchange etc.”, which was not included in the survey until now, is included for education and research purposes.
- Does not include online participants of Overseas University Programs etc.

*Source: Kyushu University: *Kyushu University Information*
 Nationwide: JASSO, *Japanese Students International Study Survey Results*

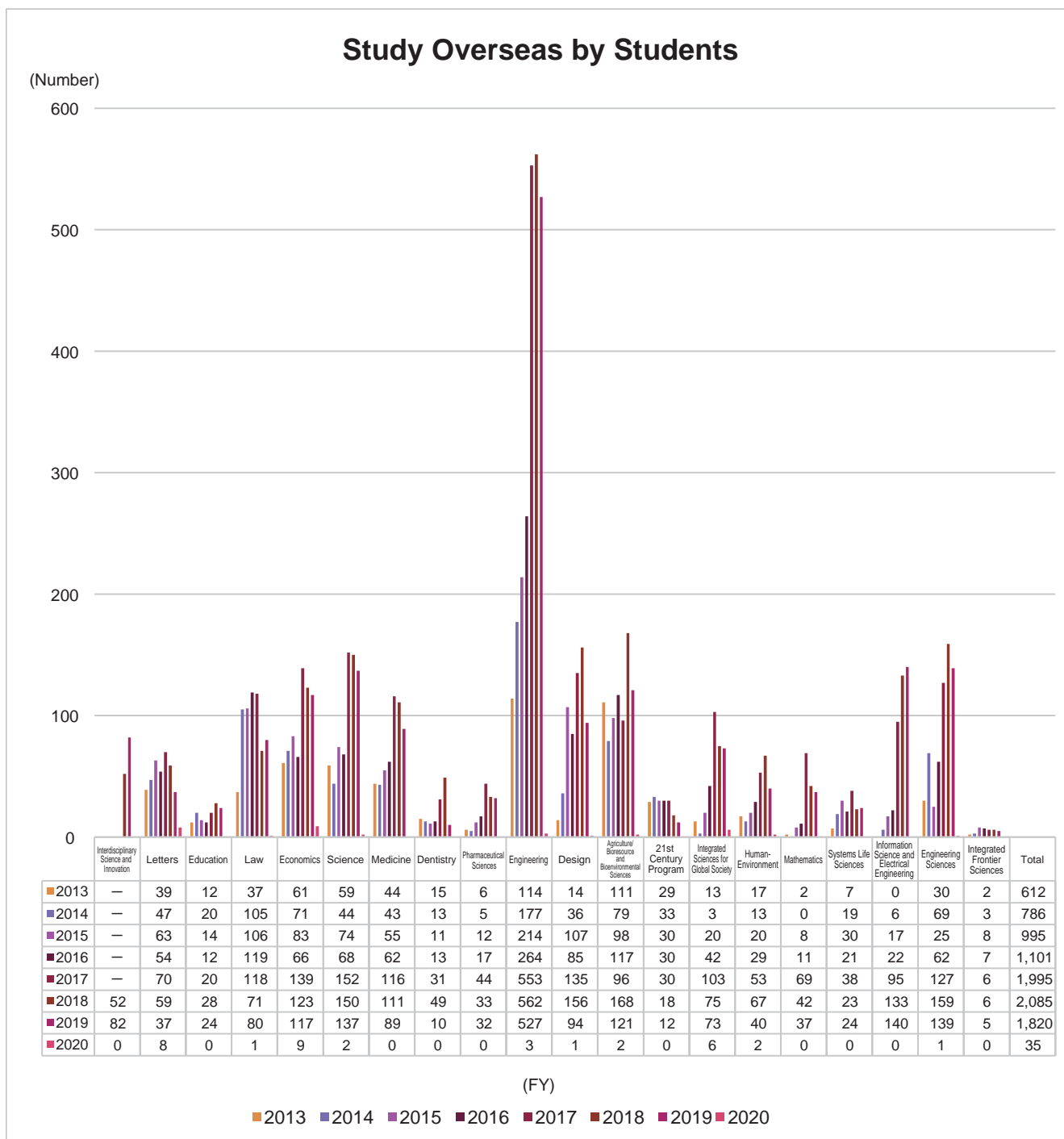
◆Comparisons with Other Universities: Percentage of Students Studying Overseas (by Region)◆



- Please note that, as definitions vary depending on the university, simple comparisons cannot be drawn.
- Hokkaido University: “Other” means those studying overseas whose university cannot be verified, due to overseas arrangements that are not under agreements.
- Nagoya University: Types and Purposes of Overseas Study includes exchange study, research, language training, degree programs etc.
- Kyoto University: The number of trips throughout 2019 discludes those for travel for personal reasons that do not include study, such as for sightseeing, returning home etc.
- Kyushu University: Total includes foreign students.

*Source: Nationwide: JASSO, *Japanese Students Overseas Study Survey Results*, Japanese Student Numbers by Region and Period of Study
 Hokkaido University: *Hokkaido University Factbook* (May 1st 2019) Japanese Students Overseas Study Dispatch (By Country)
 Tohoku University: Public University Corporate Evaluation Data “Input Data Collection” (2019) Dispatchment of Students to Overseas
 The University of Tokyo: *The University of Tokyo Data Book 2019* (May 1st 2019) Number of Students Studying Overseas etc.
 Nagoya University: *Nagoya University Profile 2020* (Fiscal Year 2019) Number of Students Studying Overseas
 Kyoto University: *Kyoto University Overview 2020* (Fiscal Year 2019) Number of Students Studying Overseas
 Osaka University: *Osaka University Profile 2020* (Fiscal Year 2019) Number of Students Currently Enrolled in Overseas Study
 Kyushu University: *Kyushu University Information 2020* (Fiscal Year 2019) Study Overseas by Kyushu University Students

10-2-2. Study Overseas by Students (by School/Institute/Faculty, etc.)

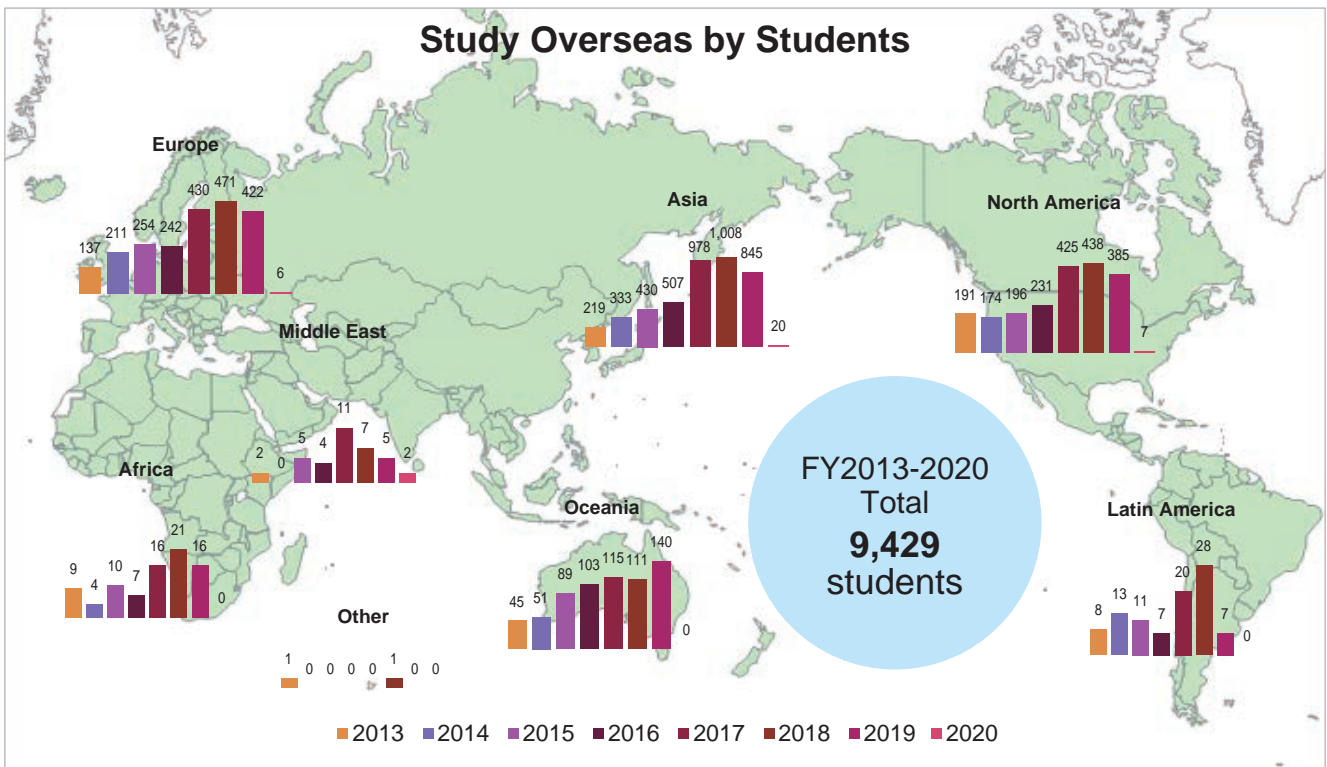


- Data includes those who began their overseas study periods in the previous Fiscal Year (FY 2013-2018).
- The total figures include the number of international students (FY 2019-2020).
- Due to the spread of the COVID-19, travel advisories have been put into place, and the number of international students has dramatically decreased (FY 2020).
- Does not include online participants of Overseas University Programs etc.

*Source: *Kyushu University Information*

10-2-3. Study Overseas by Students (by Region)

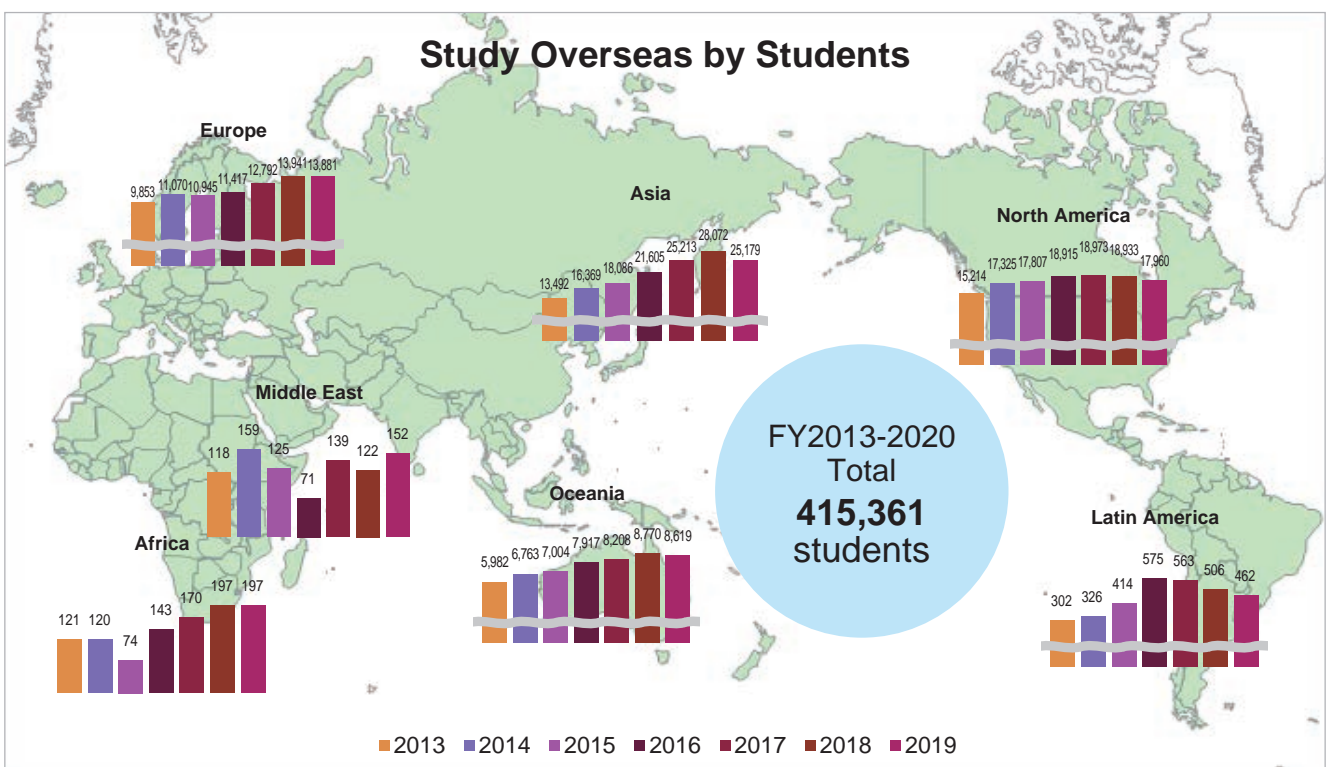
◆Kyushu University◆



- Data includes those who began their overseas study periods in the previous Fiscal Year (FY 2013-2018).
- The total figures include the number of international students (FY 2019-2020).
- Due to the spread of the COVID-19, travel advisories have been put into place, and the number of international students has dramatically decreased (FY 2020).

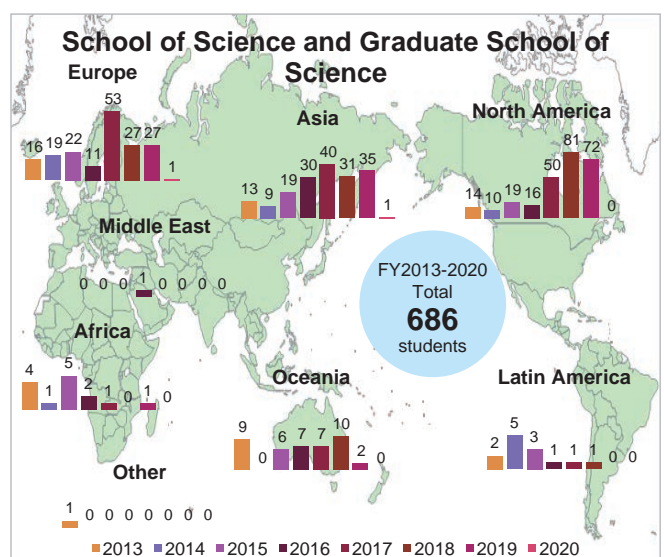
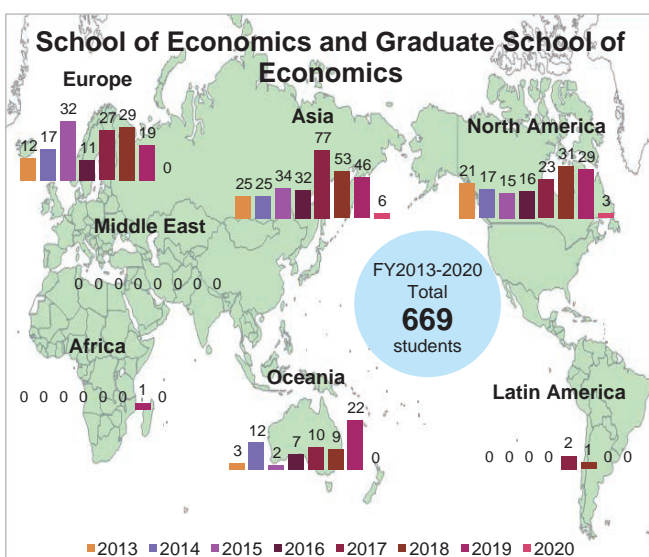
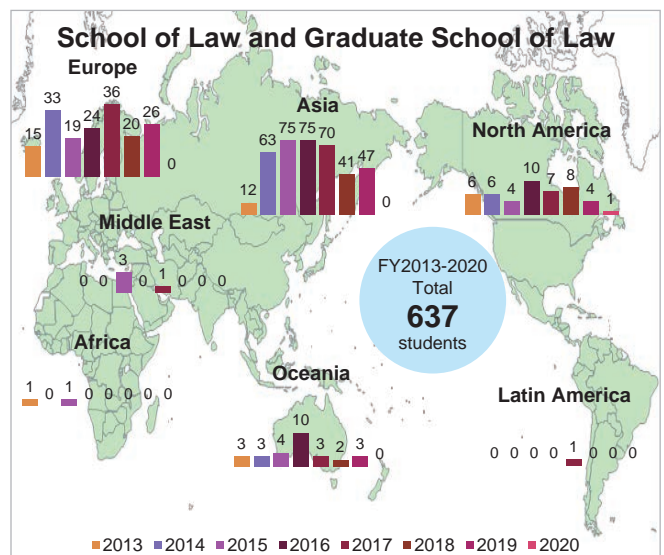
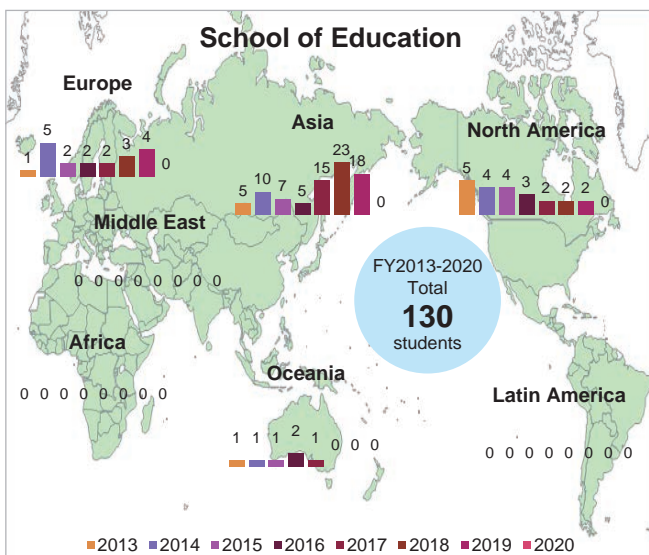
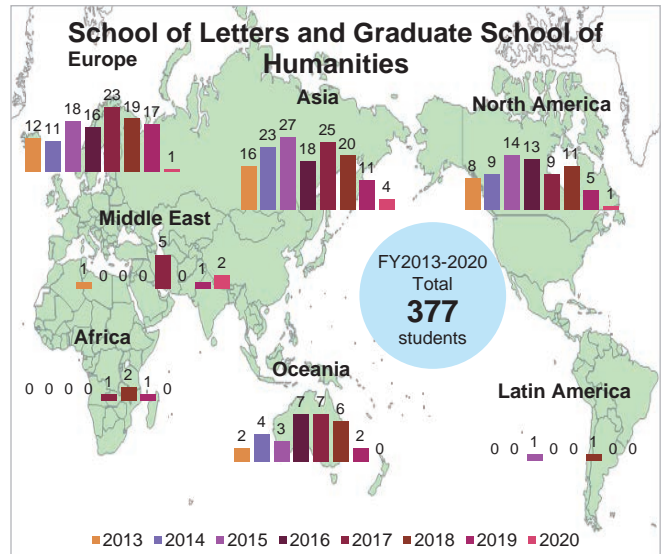
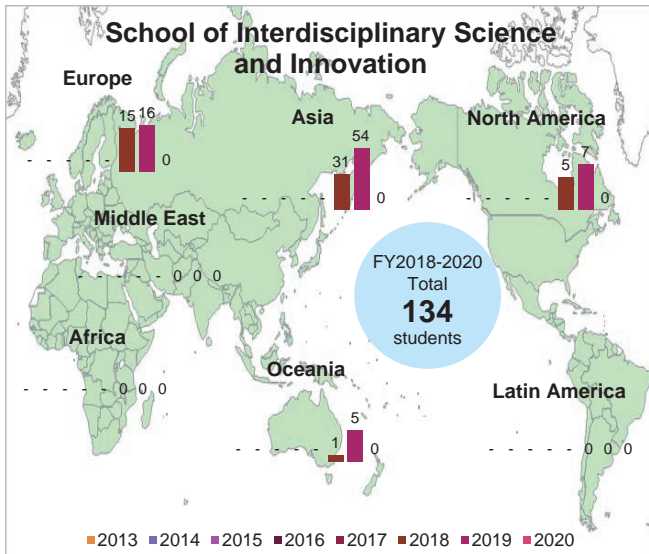
*Source: Kyushu University Information

◆Nationwide◆



*Source: JASSO, Japanese Students International Study Survey Results

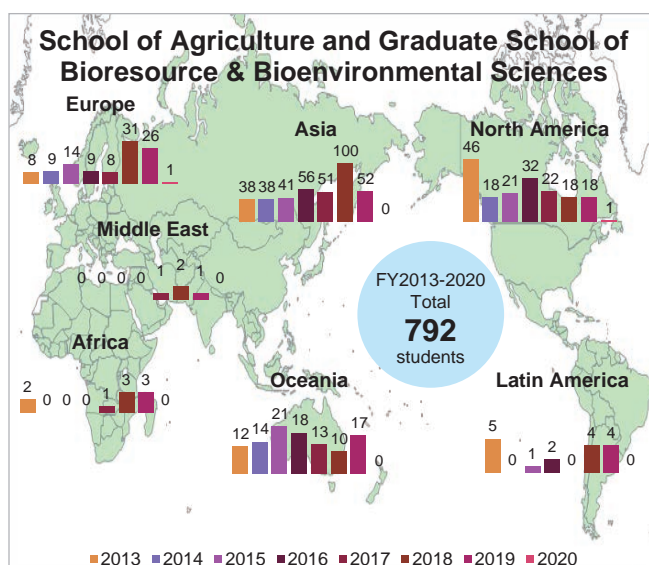
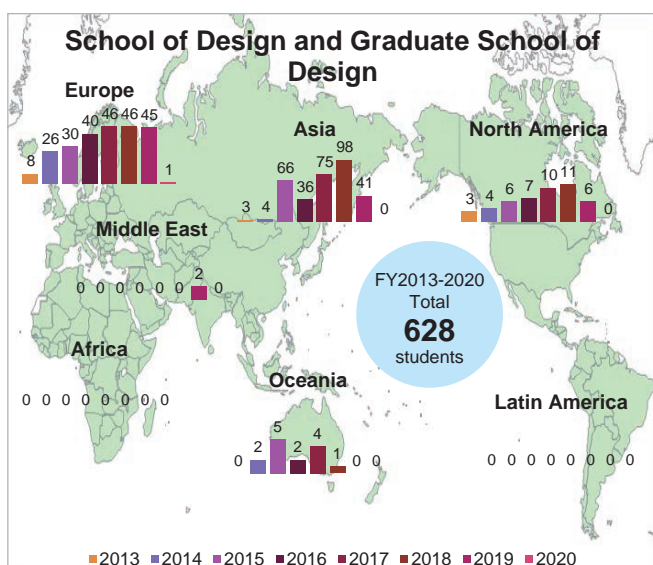
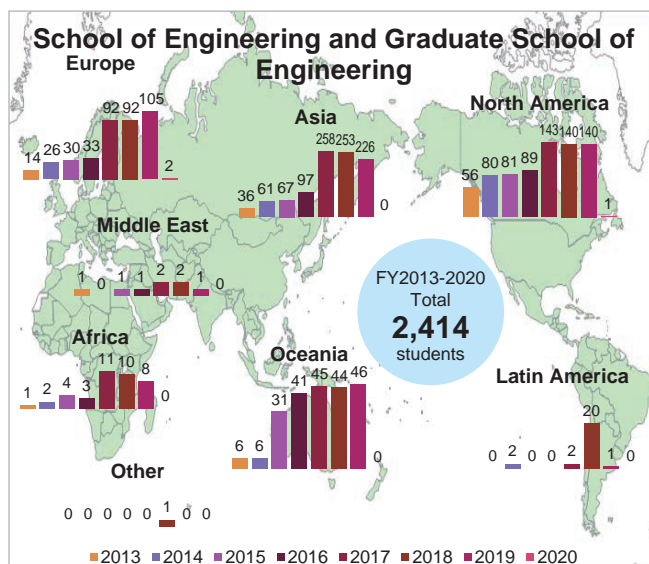
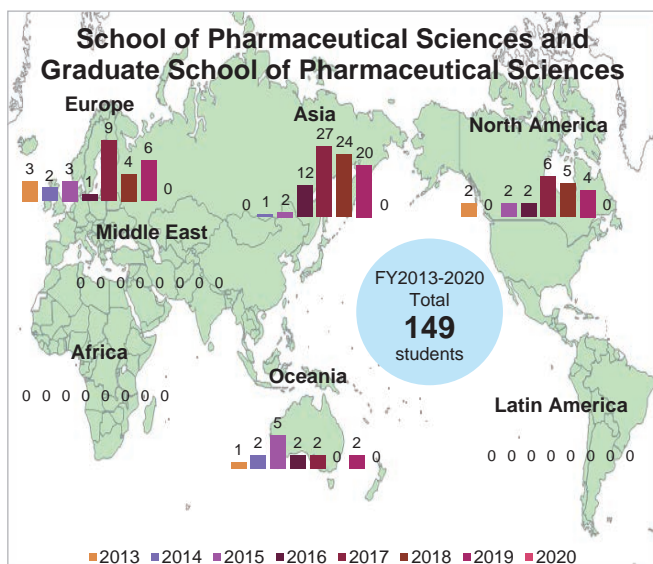
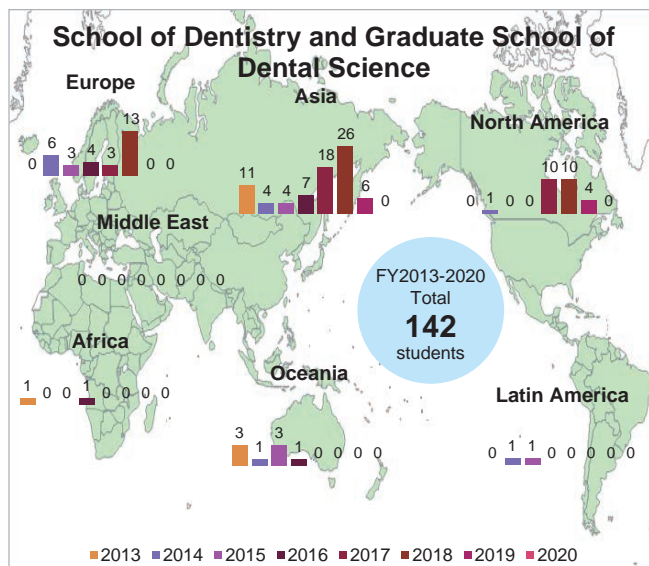
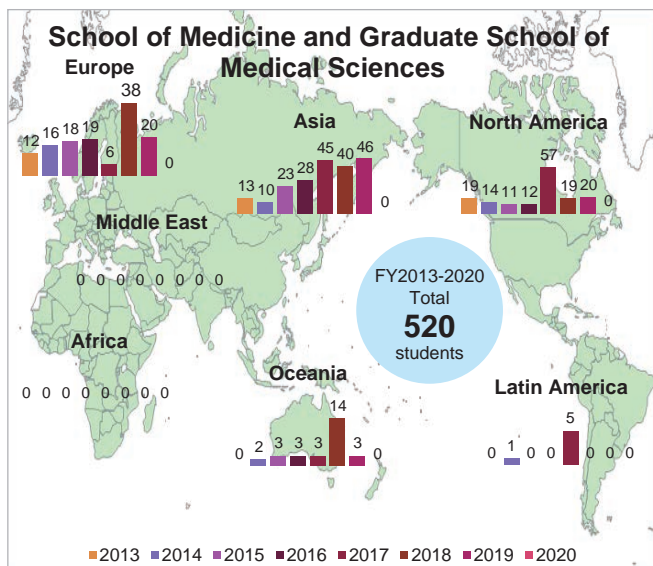
10-2-4. Study Overseas by Students (by School/Institute/Faculty, etc. and Region)



- The School of Interdisciplinary Science and Innovation was established in FY 2018.
- Data includes those who began their overseas study periods in the previous Fiscal Year (FY 2013-2018).
- The total figures include the number of international students (FY 2019-2020).

*Source: Kyushu University Information

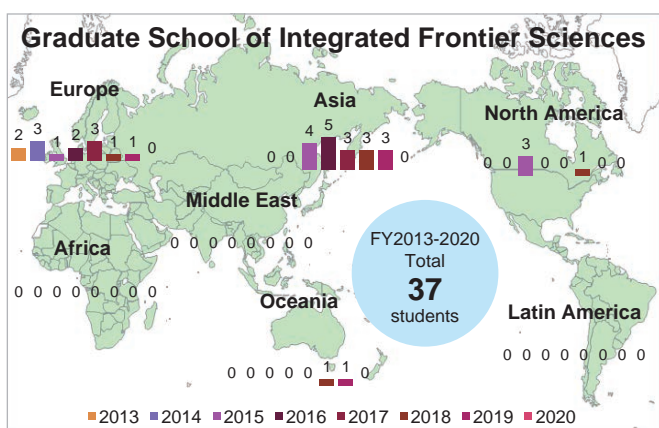
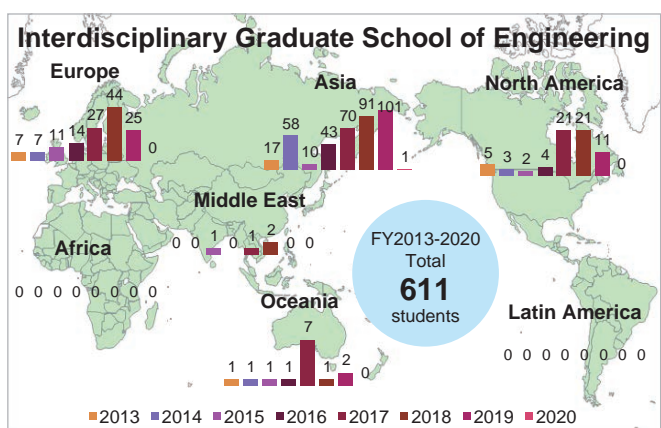
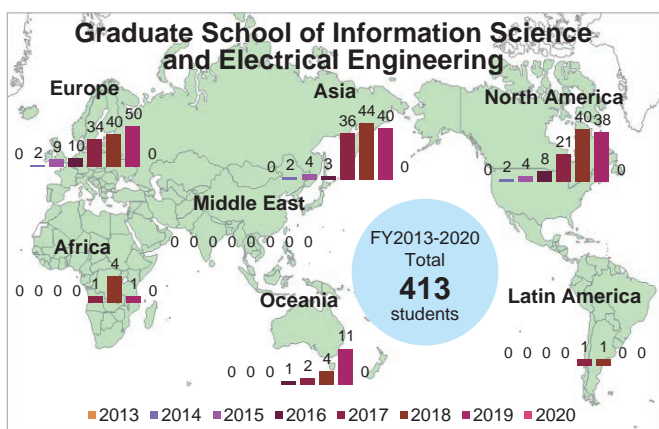
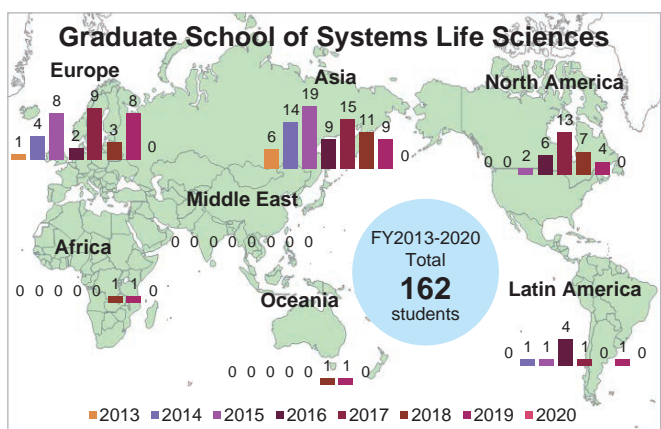
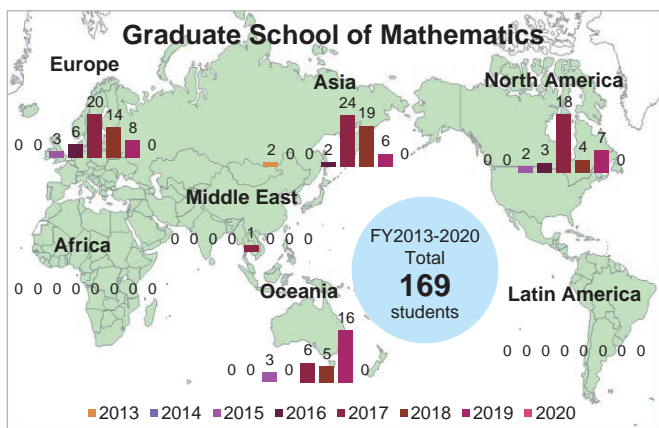
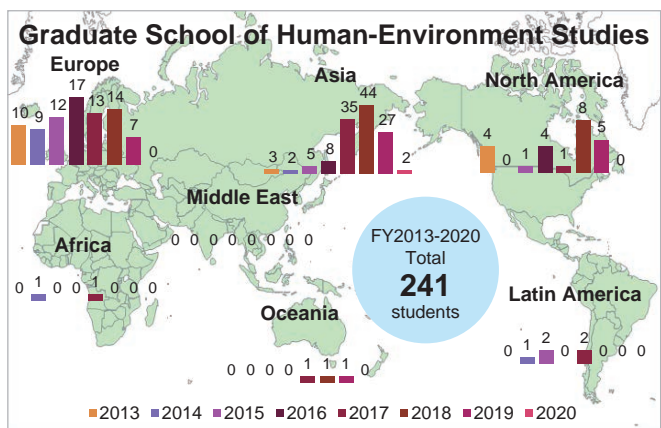
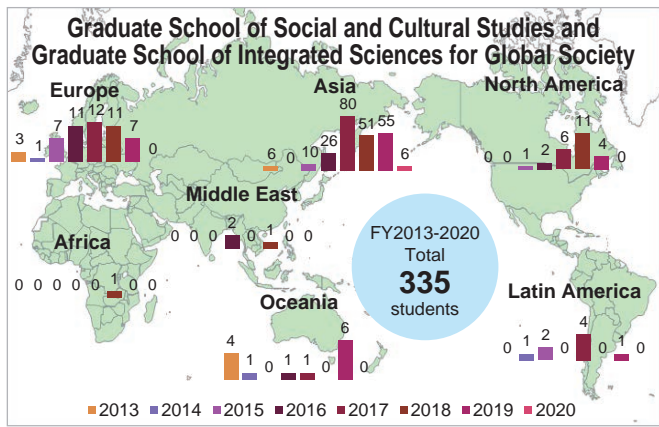
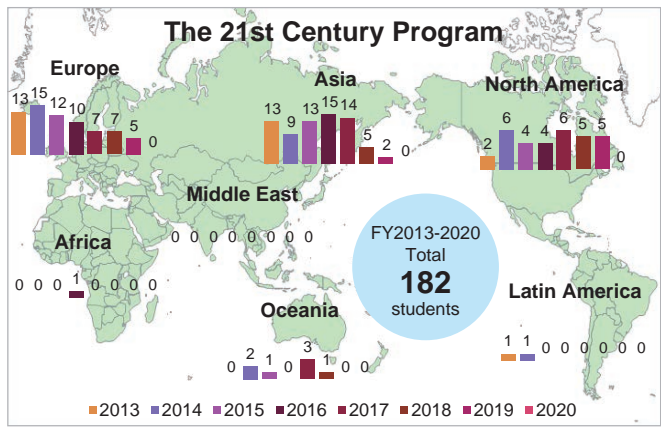
10-2-4. Study Overseas by Students (by School/Institute/Faculty, etc. and Region) (Continued)



• Data includes those who began their overseas study periods in the previous Fiscal Year (FY 2013-2018).
 • The total figures include the number of international students (FY 2019-2020).

*Source: Kyushu University Information

10-2-4. Study Overseas by Students (by School/Institute/Faculty, etc. and Region) (Continued)



• Data includes those who began their overseas study periods in the previous Fiscal Year (FY 2013-2018).
 • The total figures include the number of international students (FY 2019-2020).

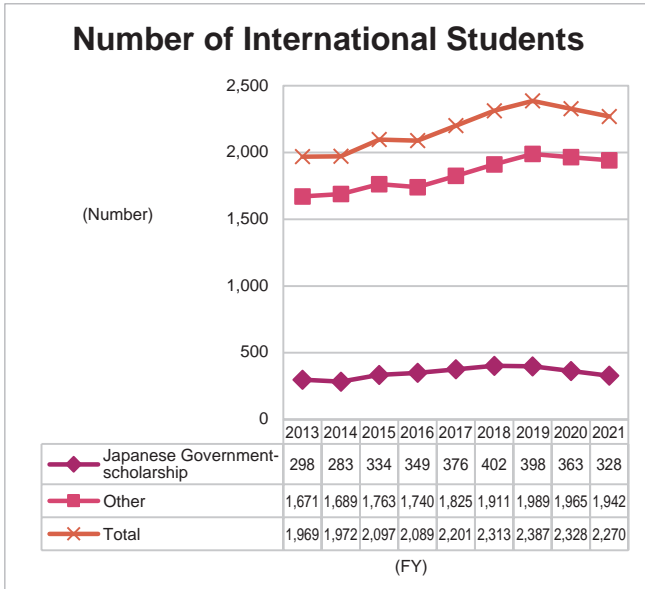
*Source: Kyushu University Information

10-3. International Student Admissions

10-3-1. International Student Admissions (Overall)

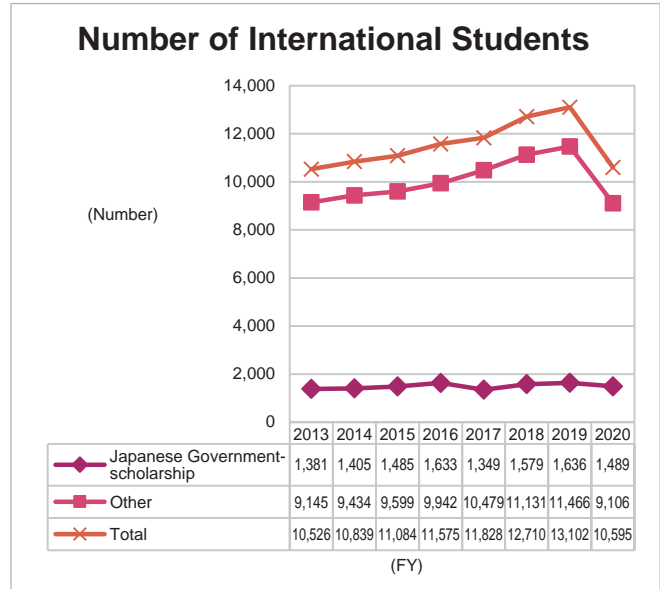
◆Kyushu University◆

★Key Performance Indicators (KPI) for the Designated National University Corporations



- Japanese Government scholarship: Students Funded by Government Scholarships.
- Other: Japanese Government funded International students, excluding those dispatched by international Governments, self-funded students (including students from JICA-related projects), students dispatched under the funding of foreign governments (including the Chinese Government's "CSC-OU Joint Scholarship Program").

◆Nationwide: National Universities◆



- Japanese Government scholarship: Students Funded by Scholarships from the Japanese Government.
- Other: Students who are not self-funded students, who have received private funding for scholarships from their area of residence or the country.

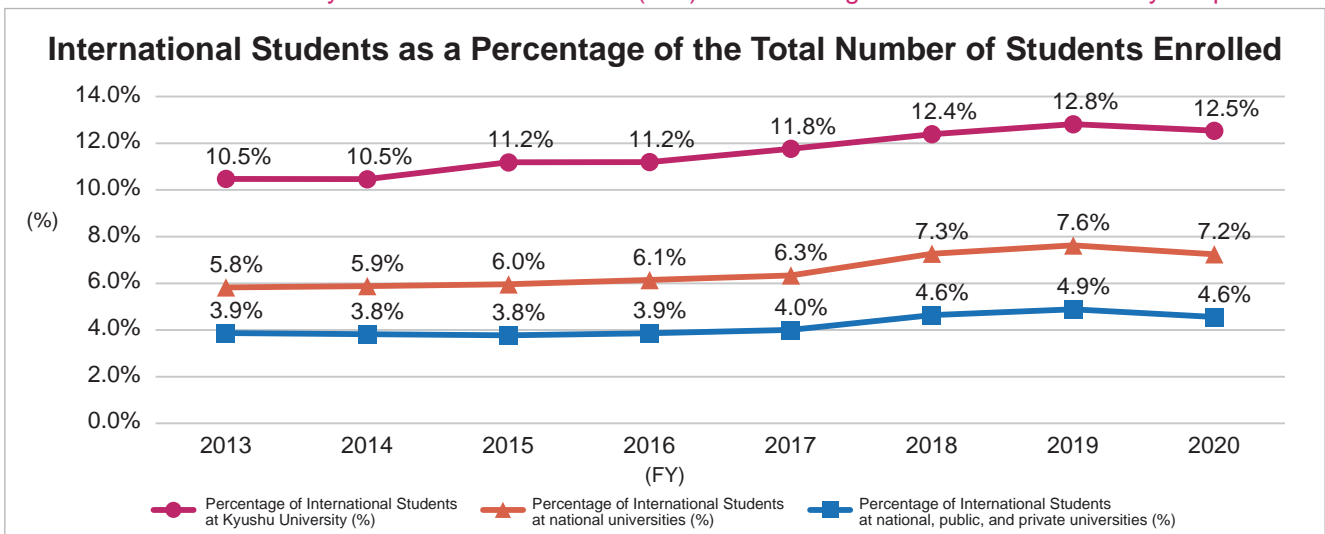
*Source:

Kyushu University: *Kyushu University Information*

Nationwide: MEXT *Basic School Survey International Student Numbers by Related Subjects (University)*

◆International Students as a Percentage of the Total Number of Students Enrolled◆

★Key Performance Indicators (KPI) for the Designated National University Corporations

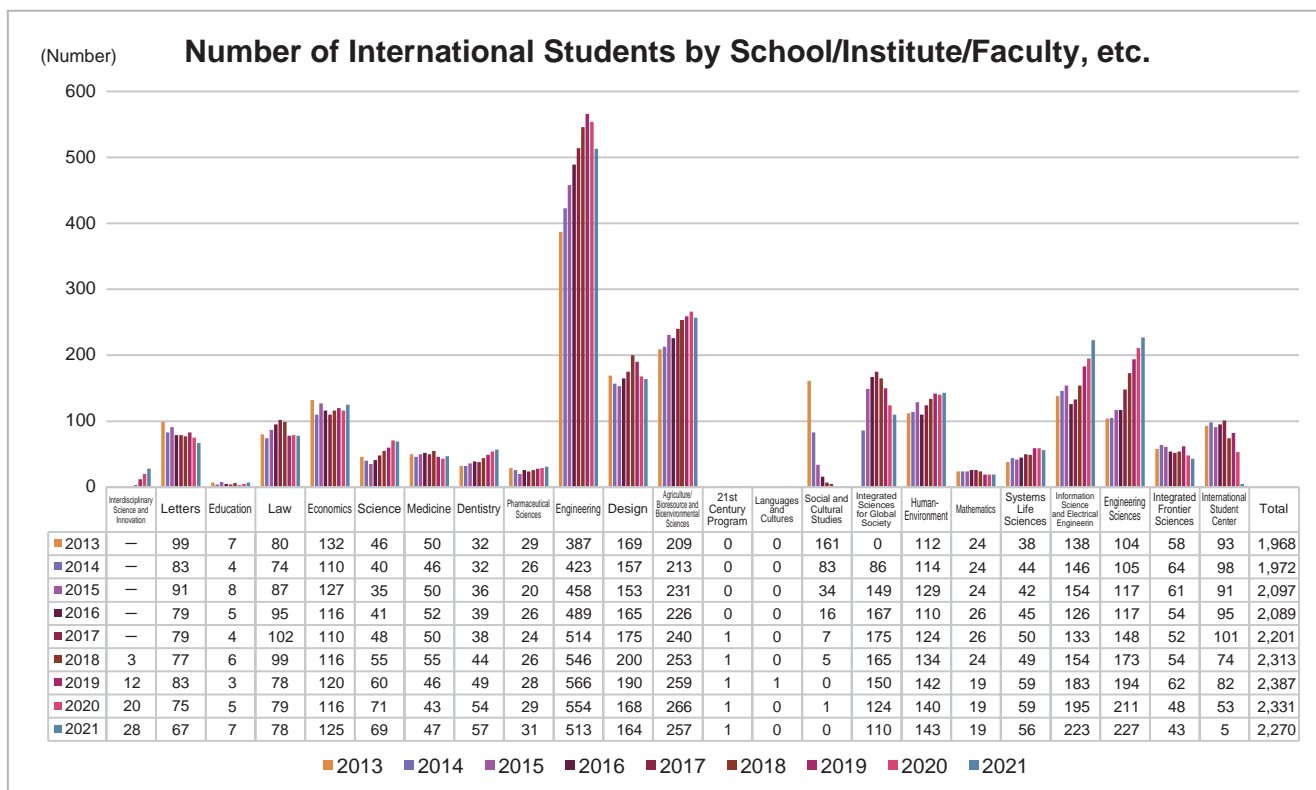


*Source:

Kyushu University: *Kyushu University Information*

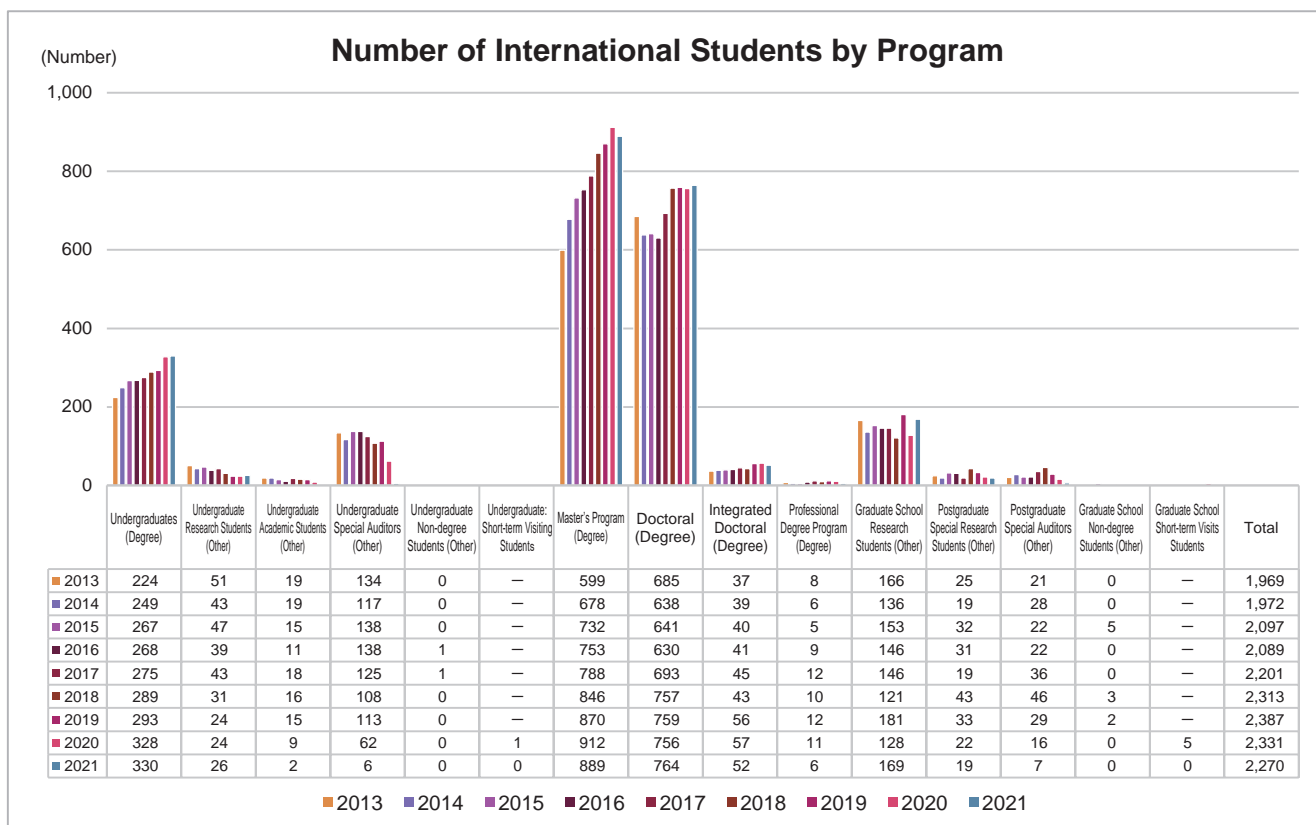
Nationwide: JASSO, *Foreign Student Enrollment Survey Results* and MEXT *Basic Schools Survey*

10-3-2. International Student Admissions (by School/Institute/Faculty, etc.)



*Source: Kyushu University Information

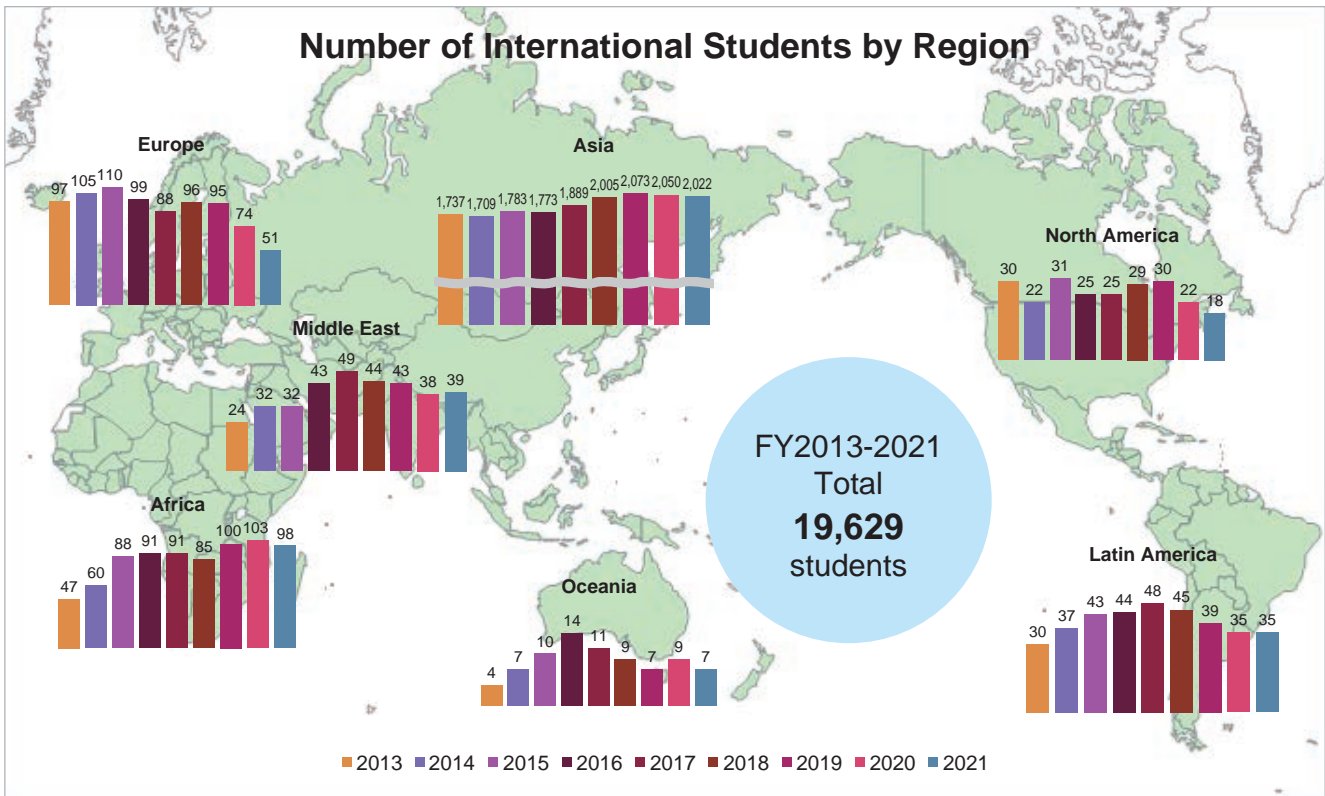
10-3-3. International Student Admissions (by Program)



*Source: Data from International Affairs Department (2013-2018)
Kyushu University Information (2019-2021)

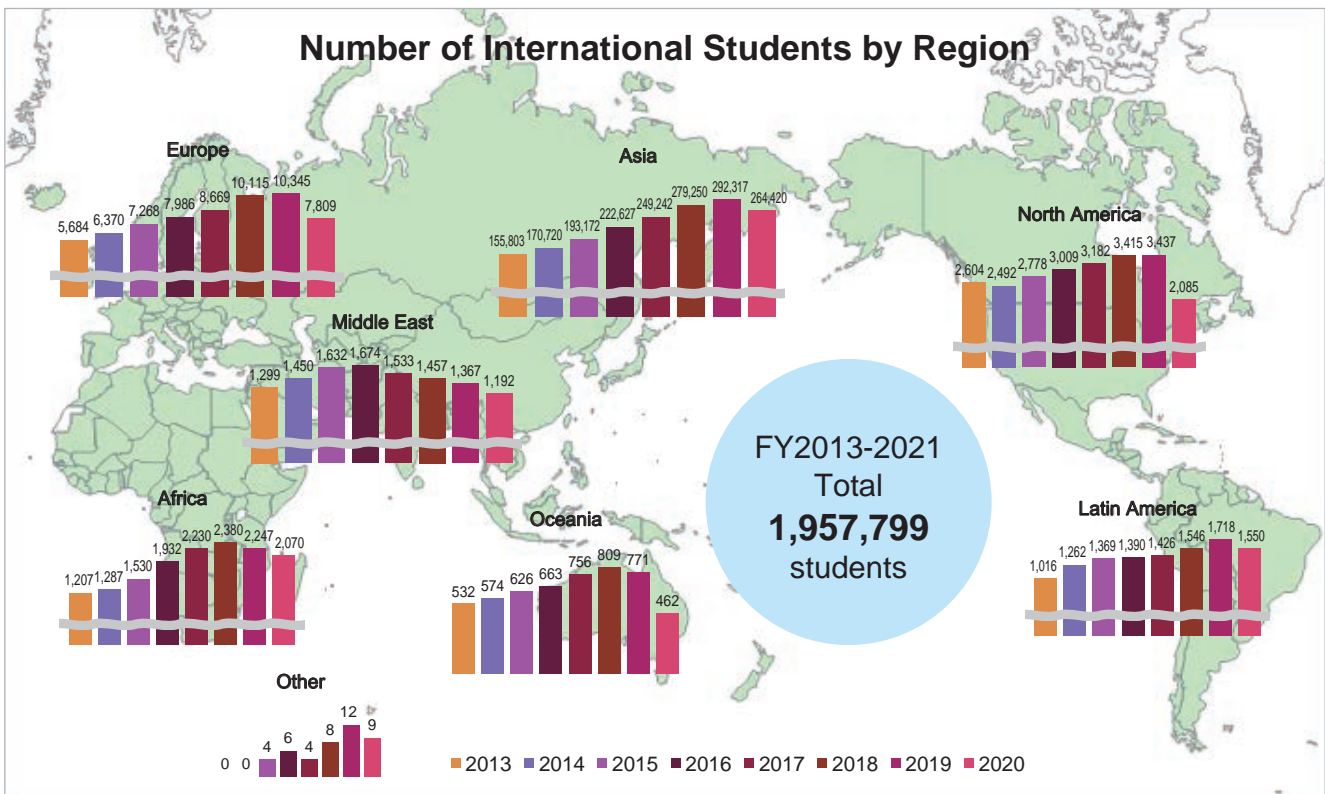
10-3-4. International Student Admissions (by Region)

◆Kyushu University◆



*Source: Kyushu University Information

◆Nationwide◆



• From FY 2015, data includes "Other" (stateless individuals).

*Source: JASSO, Result of an Annual survey of International Students in Japan